

Anti-SCF Antibody [4G5]

RT1553



Product Type:	Mouse monoclonal IgG1, primary antibodies
Species reactivity:	Human, Mouse, Rat
Applications:	WB, IP, IF, IHC-P
Molecular Wt:	48kDa
Clone number:	4G5

Description: Stem cell factor (SCF) is the ligand for the transmembrane tyrosine kinase receptor proto-oncogene c-Kit. SCF, also designated KL, MGF and SLF, is a pleiotropic cytokine that has two alternatively spliced forms, 248 and 220 amino acids in length in human and mouse systems, respectively. Both the larger form and the smaller form are cleaved to produce soluble forms. The smaller splice variant lacks the proteolytic cleavage site, between amino acids 149 and 177 of the larger SCF form. The larger SCF form is expressed in fibroblasts, brain and thymus, while the smaller SCF form is found in the spleen, testis, placenta and cerebellum. The SCF ligand is essential for the development of germ cells, hematopoietic progenitor cells and melanocyte precursors. With respect to mast cells, SCF can stimulate the proliferation of mature mast cells as well as the maturation and proliferation of immature mast cells

Immunogen: Amino acids 26-214 of SCF of human origin.

Positive control: MCF7, COLO320DM, rat brain tissue, mouse brain tissue, human colon tissue, human lung tissue, human small intestine tissue

Subcellular location: Cytoplasm, Secreted, Cell membrane

Database links: SwissProt: P21583 Human

Recommended Dilutions:

WB	1:200-1:2,000
IP	1-2 µg per 100-500 µg of total protein(1 ml of cell lysate)
IF	1:50-1:500
IHC-P	1:50-1:500

Storage Buffer: 1.0 ml of PBS with < 0.1% sodium azide and 0.1% gelatin.

Storage Instruction: Store at +4℃

Purity: Protein A affinity purified.

Hangzhou Huaan Biotechnology Co., Ltd.

Orders:0086-571-88062880

Technical:0086-571-89986345

Service mail:support@huabio.cn

华安生物
HUABIO
www.huabio.cn

Applications:WB=Western blot IHC-P=Immunohistochemistry (paraffin) IF-Cell=Immunofluorescence (Cell) IF-Tissue=Immunofluorescence (Tissue) FC=Flow cytometry IP=Immunoprecipitation

Images

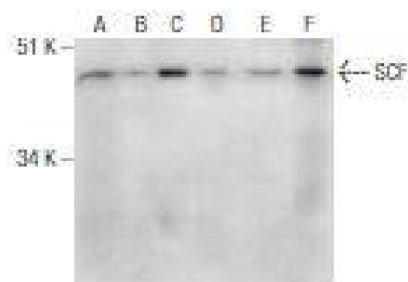


Fig1: Western blot analysis of SCF expression in MCF7 (A) and COLO 320DM (B) whole cell lysates and rat brain (C), mouse brain (D), human colon (E) and human lung (F) tissue extracts.

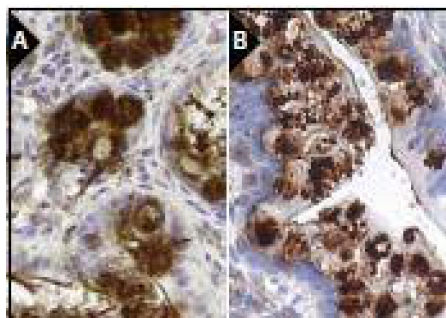


Fig2: Immunoperoxidase staining of formalin fixed, paraffin-embedded human colon tissue showing membrane and extracellular staining of glandular cells (A). Immunoperoxidase staining of formalin fixed, paraffin-embedded human small intestine tissue showing cytoplasmic staining of goblet cells (B).

Note: All products are "FOR RESEARCH USE ONLY AND ARE NOT INTENDED FOR DIAGNOSTIC OR THERAPEUTIC USE".

Background References

1. Krasagakis, K., et al. 2011. KIT receptor activation by autocrine and paracrine stem cell factor stimulates growth of merkel cell carcinoma in vitro. J. Cell. Physiol. 226: 1099-1109.
2. David, A., et al. 2011. Immunohistochemical localization of growth factors after cryopreservation and 3 weeks' xenotransplantation of human ovarian tissue. Fertil. Steril. 95: 1241-1246.

Hangzhou Huaan Biotechnology Co., Ltd.

Orders:0086-571-88062880

Technical:0086-571-89986345

Service mail:support@huabio.cn

华安生物
HUABIO
www.huabio.cn

Applications:WB=Western blot IHC-P=Immunohistochemistry (paraffin) IF-Cell=Immunofluorescence (Cell) IF-Tissue=Immunofluorescence (Tissue) FC=Flow cytometry IP=Immunoprecipitation