

Anti-BrdU Antibody [1G1]

RT1081



Product Type:	Mouse monoclonal IgG1, primary antibodies
Species reactivity:	Species independent
Applications:	IF, IHC-P, FC
Clone number:	1G1

Description: The halogenated pyrimidine thymidine analog bromodeoxyuridine (BrdU) is incorporated into newly synthesized DNA strands of S-phase cells and is useful for estimating the fraction of cells in S-phase. Additionally, the analysis of the uptake of BrdU is a reliable method to quantitate the degree of DNA-synthesis. BrdU is also useful for studying sister chromatid exchange and to isolate nascent DNA. UV-induced excision-repair synthesis is one method for incorporating BrdU into cellular DNA. Anti-BrdU antibodies bind to the exposed BrdU in single-stranded DNA after a hydrochloric acid denaturation step or nuclease digestion. Protease antigen recovery is necessary for most tissues or cells fixed with crosslinking agents such as formalin but may decrease the specificity of BrdUrd immunodetection. The monoclonal antibody Bu20a against BrdU stains BrdU incorporated into the nuclei of a wide range of proliferating cell types including human tumors growing in nude mice and tonsil lymphoid.

Immunogen: Raised against Bromodeoxyuridine (BrdU) conjugated to BSA.

Positive control: BrdU-labeled HeLa cell, BrdU treated K-562 cells.

Subcellular location: Nucleus.

Recommended Dilutions:

FC	1 µg per 1 x 10 ⁶ cells
IF	1:50-500
IHC-P	1:50-500

Storage Buffer: 1.0 ml of PBS with < 0.1% sodium azide and 0.1% gelatin.

Storage Instruction: Store at +4℃

Purity: Protein A affinity purified.

Hangzhou Huaan Biotechnology Co., Ltd.

Orders:0086-571-88062880

Technical:0086-571-89986345

Service mail:support@huabio.cn

华安生物
HUABIO
www.huabio.cn

Applications:WB=Western blot IHC-P=Immunohistochemistry (paraffin) IF-Cell=Immunofluorescence (Cell) IF-Tissue=Immunofluorescence (Tissue) FC=Flow cytometry IP=Immunoprecipitation

Images

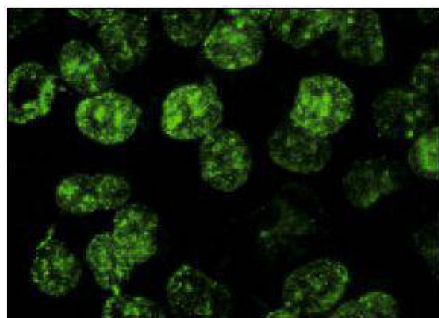


Fig1: Immunofluorescence staining of methanol-fixed BrdU-labeled HeLa cells showing nuclear localization.

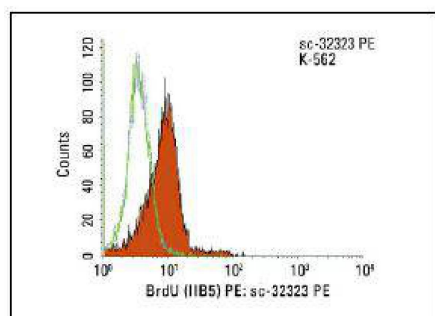


Fig2: Intracellular FCM analysis of fixed and permeabilized untreated (dotted blue histogram) and BrdU treated (solid orange histogram) K-562 cells. Green line histogram represents the isotype control, normal mouse IgG1.

Note: All products are "FOR RESEARCH USE ONLY AND ARE NOT INTENDED FOR DIAGNOSTIC OR THERAPEUTIC USE".

Background References

1. Qu, W.S., et al. 2011. Galectin-1 attenuates astrogliosis-associated injuries and improves recovery of rats following focal cerebral ischemia. J. Neurochem. 116: 217-226.
2. Crupi, R., et al. 2011. Hypericum perforatum treatment: effect on behaviour and neurogenesis in a chronic stress model in mice. BMC Complement. Altern. Med. 11: 7.

Hangzhou Huaan Biotechnology Co., Ltd.

Orders:0086-571-88062880

Technical:0086-571-89986345

Service mail:support@huabio.cn

华安生物
HUABIO
www.huabio.cn

Applications:WB=Western blot IHC-P=Immunohistochemistry (paraffin) IF-Cell=Immunofluorescence (Cell) IF-Tissue=Immunofluorescence (Tissue) FC=Flow cytometry IP=Immunoprecipitation