

# Anti-IREB2 Antibody

## R1706-12



<b>Product Type:</b>	Rabbit polyclonal IgG, primary antibodies
<b>Species reactivity:</b>	Human, Mouse, Rat
<b>Applications:</b>	WB, IF-Cell, IHC-P, FC
<b>Molecular Wt:</b>	Predicted band size: 105/38 kDa

**Description:** Iron metabolism is essential for sustaining mammalian homeostasis. Iron uptake and distribution is a highly regulated process in mammalian cells that is monitored by two iron sensing proteins: IRP-1 and -2 (iron regulatory protein-1 and -2), also known as iron responsive element-binding protein-1 and -2 (IRE-BP-1 and -2) or aconitase 1 and 2. IRP-1 and IRP-2 are important soluble regulatory factors that mediate iron uptake and storage in mammalian cells. They are capable of either repressing translation or enhancing mRNA stability by associating with stem-loop motifs known as iron-responsive elements (IREs). IRPs respond to stress mediators, iron concentration and signaling factors, including nitrogen monoxide, cytokines and hydrogen peroxide.

**Immunogen:** Recombinant protein within Human IREB2 aa 17-301 / 963.

**Positive control:** K562, mouse kidney tissue lysate, rat skin tissue lysate, 293T, A549, HepG2, human kidney tissue, human placenta tissue.

**Subcellular location:** Cytoplasm.

**Database links:** SwissProt: P48200 Human | Q811J3 Mouse | Q62751 Rat

### Recommended Dilutions:

<b>WB</b>	1:500-1:1000
<b>IF-Cell</b>	1:50-1:200
<b>IHC-P</b>	1:50-1:200
<b>FC</b>	1:50-1:100

**Storage Buffer:** 1\*PBS (pH7.4), 0.2% BSA, 50% Glycerol. Preservative: 0.05% Sodium Azide.

**Storage Instruction:** Shipped at 4°C. Store at +4°C short term (1-2 weeks). It is recommended to aliquot into single-use upon delivery. Store at -20°C long term.

**Purity:** Protein A affinity purified.

Hangzhou Huaan Biotechnology Co., Ltd.

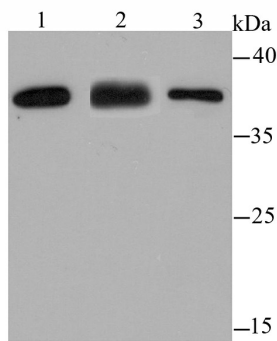
Orders:0086-571-88062880

Technical:0086-571-89986345

Service mail:support@huabio.cn

 华安生物  
HUABIO  
www.huabio.cn

## Images



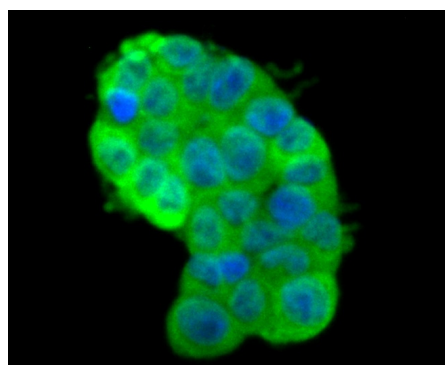
**Fig1:** Western blot analysis of IREB2 on different lysates using anti-IREB2 antibody at 1/500 dilution.

**Positive control:**

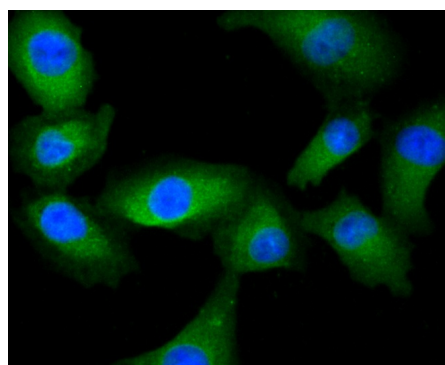
Lane 1: K562

Lane 2: Mouse kidney tissue

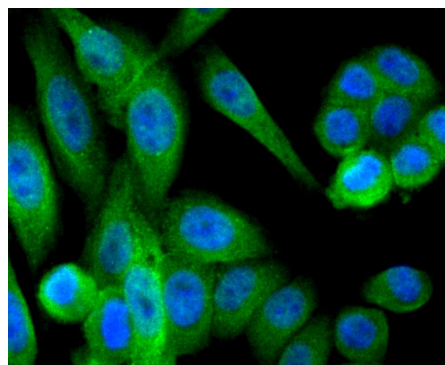
Lane 3: Rat skin tissue



**Fig2:** ICC staining IREB2 in 293T cells (green). The nuclear counter stain is DAPI (blue). Cells were fixed in paraformaldehyde, permeabilised with 0.25% Triton X100/PBS.



**Fig3:** ICC staining IREB2 in A549 cells (green). The nuclear counter stain is DAPI (blue). Cells were fixed in paraformaldehyde, permeabilised with 0.25% Triton X100/PBS.



**Fig4:** ICC staining IREB2 in HepG2 cells (green). The nuclear counter stain is DAPI (blue). Cells were fixed in paraformaldehyde, permeabilised with 0.25% Triton X100/PBS.

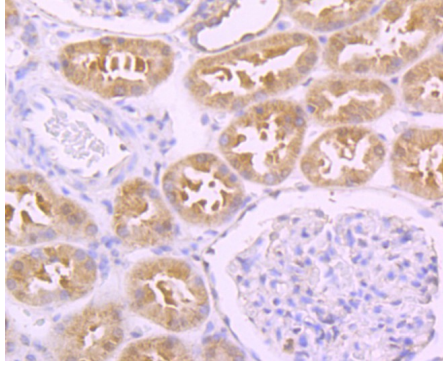
Hangzhou Huaan Biotechnology Co., Ltd.

Orders:0086-571-88062880

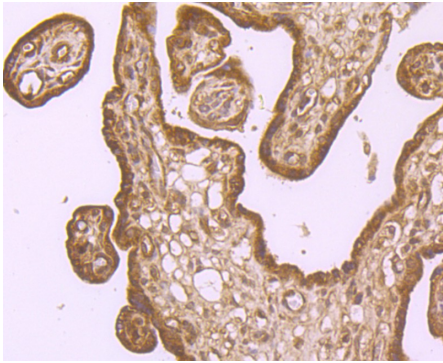
Technical:0086-571-89986345

Service mail:support@huabio.cn

华安生物  
HUABIO  
www.huabio.cn



**Fig5:** Immunohistochemical analysis of paraffin-embedded human kidney tissue using anti-IREB2 antibody. Counter stained with hematoxylin.



**Fig6:** Immunohistochemical analysis of paraffin-embedded human placenta tissue using anti-IREB2 antibody. Counter stained with hematoxylin.

**Note:** All products are “FOR RESEARCH USE ONLY AND ARE NOT INTENDED FOR DIAGNOSTIC OR THERAPEUTIC USE”.

### Background References

1. Cloonan SM et al. Mitochondrial iron chelation ameliorates cigarette smoke-induced bronchitis and emphysema in mice. *Nat Med* 22:163-74 (2016).
2. Ripa R et al. MicroRNA miR-29 controls a compensatory response to limit neuronal iron accumulation during adult life and aging. *BMC Biol* 15:9 (2017).

Hangzhou Huaan Biotechnology Co., Ltd.

Orders:0086-571-88062880

Technical:0086-571-89986345

Service mail:support@huabio.cn

华安生物  
HUABIO  
www.huabio.cn