

Anti-Filamin A Antibody

R1601-3



Product Type:	Rabbit polyclonal IgG, primary antibodies
Species reactivity:	Human, Mouse, Rat
Applications:	WB
Molecular Wt:	Predicted band size: 281 kDa

Description: Caldesmon, Filamin 1, Nebulin and Villin are differentially expressed and regulated Actin binding proteins. Both muscular (CDh) and non-muscular (CDI) forms of Caldesmon have been identified and each has been shown to bind to Actin as well as to calmodulin and Myosin. CDh is expressed predominantly on thin filaments in smooth muscle, whereas CDI is widely expressed in non-muscle tissues and cells. Filamin 1, which is ubiquitously expressed and exists as a homodimer, functions to crosslink Actin to filaments. Nebulin is a large filamentous protein specific to muscle tissue that may function as a ruler for filament length. Several isoforms of Nebulin are produced by alternative exon usage. Villin is Ca²⁺-regulated and is the major structural component of the brush border of absorptive cells.

Immunogen: Recombinant protein within Human Filamin A aa 2,373-2,619 / 2,647.

Positive control: HeLa cell lysate, NIH/3T3 cell lysate, C6 cell lysate, Mouse lung tissue lysate, Rat lung tissue lysate.

Subcellular location: Cytoplasm, cytoskeleton, Cell projection.

Database links: SwissProt: P21333 Human | Q8BTM8 Mouse
Entrez Gene: 293860 Rat

Recommended Dilutions:
WB 1:5,000

Storage Buffer: 1*PBS (pH7.4), 0.2% BSA, 50% Glycerol. Preservative: 0.05% Sodium Azide.

Storage Instruction: Shipped at 4°C. Store at +4°C short term (1-2 weeks). It is recommended to aliquot into single-use upon delivery. Store at -20°C long term.

Purity: Protein A affinity purified.

Hangzhou Huaan Biotechnology Co., Ltd.

Orders:0086-571-88062880

Technical:0086-571-89986345

Service mail:support@huabio.cn

 华安生物
HUABIO
www.huabio.cn

Images

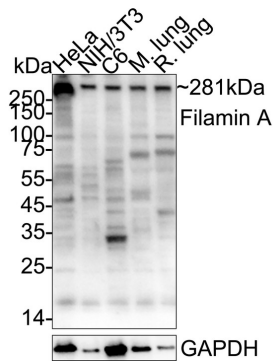


Fig1: Western blot analysis of Filamin A on different lysates with Rabbit anti-Filamin A antibody (R1601-3) at 1/5,000 dilution.

Lane 1: HeLa cell lysate (15 µg/Lane)

Lane 2: NIH/3T3 cell lysate (15 µg/Lane)

Lane 3: C6 cell lysate (15 µg/Lane)

Lane 4: Mouse lung tissue lysate (30 µg/Lane)

Lane 5: Rat lung tissue lysate (30 µg/Lane)

Predicted band size: 281 kDa

Observed band size: 281 kDa

Exposure time: 10 seconds; ECL: K1801;

4-20% SDS-PAGE gel.

Proteins were transferred to a PVDF membrane and blocked with 5% NFDN/TBST for 1 hour at room temperature. The primary antibody (R1601-3) at 1/5,000 dilution was used in primary antibody dilution (K1803) at 4°C overnight. Goat Anti-Rabbit IgG - HRP Secondary Antibody (HA1001) at 1/50,000 dilution was used for 1 hour at room temperature.

Note: All products are "FOR RESEARCH USE ONLY AND ARE NOT INTENDED FOR DIAGNOSTIC OR THERAPEUTIC USE".

Background References

1. Mizuhashi K et al. Filamin-interacting proteins, Cfm1 and Cfm2, are essential for the formation of cartilaginous skeletal elements. *Hum Mol Genet* 23(11):2953-67 (2014).
2. Adams M et al. A meckelin-filamin A interaction mediates ciliogenesis. *Hum Mol Genet* 21:1272-86 (2012).

Hangzhou Huaan Biotechnology Co., Ltd.

Orders:0086-571-88062880

Technical:0086-571-89986345

Service mail:support@huabio.cn

华安生物
HUABIO
www.huabio.cn