

Anti-Bad Antibody

R1511-32



Product Type:	Rabbit polyclonal IgG, primary antibodies
Species reactivity:	Human
Applications:	WB, IF-Cell, IHC-P, FC

Description: The Bcl-2 family of proteins is characterized by its ability to modulate cell death (apoptosis) under a broad range of physiologic conditions. Bcl-2 and several related proteins function to inhibit apoptosis while other members of the Bcl-2 family, such as Bax and Bak, enhance cell death under various conditions. For instance, Bcl-xL represses cell death, while its shorter form, Bcl-xS, promotes apoptosis. A protein designated Bad exhibits homology to Bcl-2 limited to the BH1 and BH2 domains. Bad functions to dimerize with Bcl-xL and with Bcl-2, but not with Bax, Bcl-xS, Mcl-1, A1 or itself. In mammalian cells, Bad binds with greater affinity to Bcl-xL than to Bcl-2 and reverses the death repressor activity of Bcl-xL but not Bcl-2. Dimerization of Bad with Bcl-xL results in displacement of Bax from Bcl-xL:Bax complexes thereby causing restoration of Bax-mediated apoptosis.

Immunogen: Synthetic peptide within Human Bad aa 1-50 / 168.

Positive control: HepG2, SK-BR-3, SW480, human breast carcinoma tissue, MCF-7

Subcellular location: Mitochondrion outer membrane, Cytoplasm

Database links: SwissProt: Q92934 Human

Recommended Dilutions:

IF-Cell	1:50-1:200
IHC-P	1:50-1:200
FC	1:50-1:200

Storage Buffer: 1*PBS (pH7.4), 0.2% BSA, 40% Glycerol. Preservative: 0.05% Sodium Azide.

Storage Instruction: Shipped at 4°C. Store at +4°C short term (1-2 weeks). It is recommended to aliquot into single-use upon delivery. Store at -20°C long term.

Purity: Immunogen affinity purified.

Hangzhou Huaan Biotechnology Co., Ltd.

Orders:0086-571-88062880

Technical:0086-571-89986345

Service mail:support@huabio.cn

 华安生物
HUABIO
www.huabio.cn

Images

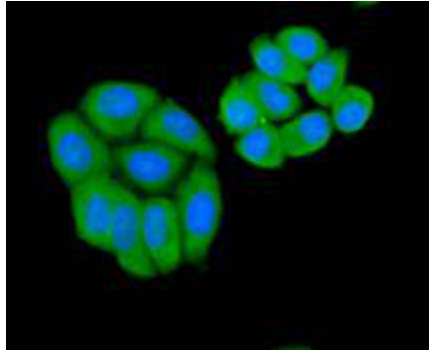


Fig1: Immunocytochemical staining of HepG2 cells using anti-Bad rabbit polyclonal antibody.

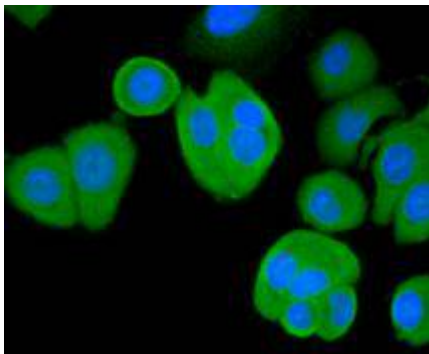


Fig2: Immunocytochemical staining of SK-BR-3 cells using anti-Bad rabbit polyclonal antibody.

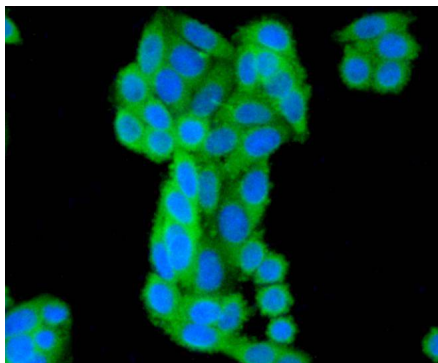


Fig3: Immunocytochemical staining of SW480 cells using anti-Bad rabbit polyclonal antibody.

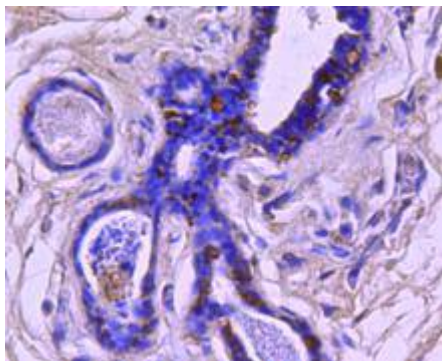


Fig4: Immunohistochemical analysis of paraffin- embedded human breast carcinoma tissue using anti-Bad rabbit polyclonal antibody.

Note: All products are "FOR RESEARCH USE ONLY AND ARE NOT INTENDED FOR DIAGNOSTIC OR THERAPEUTIC USE".

Background References

1. Sun Y et al. Up-regulation of eEF1A2 promotes proliferation and inhibits apoptosis in prostate cancer. *Biochem Biophys Res Commun* 450:1-6 (2014).
2. Sachewsky N et al. Cyclosporin A enhances neural precursor cell survival in mice through a calcineurin-independent pathway. *Dis Model Mech* 7:953-61 (2014).

Hangzhou Huaan Biotechnology Co., Ltd.

Orders:0086-571-88062880

Technical:0086-571-89986345

Service mail:support@huabio.cn

 华安生物
HUAABIO
www.huabio.cn