

Anti-Lamin B2 Antibody

R1408-4



Product Type:	Rabbit polyclonal IgG, primary antibodies
Species reactivity:	Human
Applications:	WB
Molecular Wt:	Predicted band size: 68 kDa

Description: Lamin B2 is a protein that in humans is encoded by the LMNB2 gene. It is the second of two type B nuclear lamins, and it is associated with laminopathies. Model organisms have been used in the study of Lamin B2 function. A conditional knockout mouse line, called Lmnb2tm1a(KOMP)Wtsi was generated as part of the International Knockout Mouse Consortium program — a high-throughput mutagenesis project to generate and distribute animal models of disease to interested scientists. Male and female animals underwent a standardized phenotypic screen to determine the effects of deletion. Twenty four tests were carried out on mutant mice and four significant abnormalities were observed. No homozygous mutant embryos were identified during gestation, and therefore none survived until weaning. The remaining tests were carried out on heterozygous mutant adult mice. Male heterozygotes displayed increased circulating creatinine levels and an increased susceptibility to Salmonella infection.

Immunogen: Synthetic peptide within human Lamin B2 aa 1-49/620.

Positive control: A431 cell lysate, HepG2 cell lysate, K-562 cell lysate, A549 cell lysate, Jurkat cell lysate, Raji cell lysate, HCT116 cell lysate.

Subcellular location: Nucleus lamina.

Database links: SwissProt: Q03252 Human

Recommended Dilutions:

WB 1:1,000-1:2,000

Storage Buffer: 1*PBS (pH7.4), 0.2% BSA, 40% Glycerol. Preservative: 0.05% Sodium Azide.

Storage Instruction: Shipped at 4°C. Store at +4°C short term (1-2 weeks). It is recommended to aliquot into single-use upon delivery. Store at -20°C long term.

Purity: Immunogen affinity purified.

Hangzhou Huaan Biotechnology Co., Ltd.

Orders: 0086-571-88062880

Technical: 0086-571-89986345

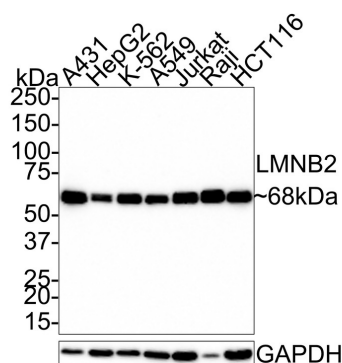
Service mail: support@huabio.cn

 华安生物
HUABIO
www.huabio.cn

Applications: WB=Western blot IHC-P=Immunohistochemistry (paraffin) IF-Cell=Immunofluorescence (Cell) IF-Tissue=Immunofluorescence (Tissue) FC=Flow cytometry IP=Immunoprecipitation

Images

Fig1: Western blot analysis of Lamin B2 on different lysates with Rabbit anti-Lamin B2 antibody (R1408-4) at 1/1,000 dilution.



Lane 1: A431 cell lysate
 Lane 2: HepG2 cell lysate
 Lane 3: K-562 cell lysate
 Lane 4: A549 cell lysate
 Lane 5: Jurkat cell lysate
 Lane 6: Raji cell lysate
 Lane 7: HCT116 cell lysate

Lysates/proteins at 10 µg/Lane.

Predicted band size: 68 kDa

Observed band size: 68 kDa

Exposure time: 1 minute;

4-20% SDS-PAGE gel.

Proteins were transferred to a PVDF membrane and blocked with 5% NFDM/TBST for 1 hour at room temperature. The primary antibody (R1408-4) at 1/1,000 dilution was used in 5% NFDM/TBST at room temperature for 2 hours. Goat Anti-Rabbit IgG - HRP Secondary Antibody (HA1001) at 1:100,000 dilution was used for 1 hour at room temperature.

Note: All products are "FOR RESEARCH USE ONLY AND ARE NOT INTENDED FOR DIAGNOSTIC OR THERAPEUTIC USE".

Background References

1. "Sequencing of the reannotated LMNB2 gene reveals novel mutations in patients with acquired partial lipodystrophy." Hegele R.A., Cao H., Liu D.M., Costain G.A., Charlton-Menys V., Rodger N.W., Durrington P.N. Am. J. Hum. Genet. 79:383-389(2006)
2. "System-wide temporal characterization of the proteome and phosphoproteome of human embryonic stem cell differentiation." Rigbolt K.T., Prokhorova T.A., Akimov V., Henningsen J., Johansen P.T., Kratchmarova I., Kassem M., Mann M., Olsen J.V., Blagoev B. Sci. Signal. 4:RS3-RS3(2011)

Hangzhou Huaan Biotechnology Co., Ltd.

Orders:0086-571-88062880

Technical:0086-571-89986345

Service mail:support@huabio.cn

华安生物
 HUABIO
 www.huabio.cn

Applications:WB=Western blot IHC-P=Immunohistochemistry (paraffin) IF-Cell=Immunofluorescence (Cell) IF-Tissue=Immunofluorescence (Tissue) FC=Flow cytometry IP=Immunoprecipitation