

Anti-HSV tag Antibody

R1401-9



Product Type: Rabbit polyclonal IgG, primary antibodies

Species reactivity: Species independent

Applications: WB, ELISA

Description: Epitope tags are useful for the labeling and detection of proteins using immunoblotting, immunoprecipitation, and immunostaining techniques. Because of their small size, they are unlikely to affect the tagged protein's biochemical properties. HSV-tag is an epitope tag composed of a 12 residue peptide. This antibody recognizes the HSV-tag fused to either the amino- or carboxy-terminus of targeted proteins.

Immunogen: Recombinant protein fused with HSV Tag.

Positive control: HSV tagged fusion protein

Recommended Dilutions:

WB 1:5,000

ELISA 1:10,000

Storage Buffer: 1*PBS (pH7.4), 0.2% BSA, 40% Glycerol. Preservative: 0.05% Sodium Azide.

Storage Instruction: Store at +4°C after thawing. Aliquot store at -20°C or -80°C. Avoid repeated freeze / thaw cycles.

Purity: Immunogen affinity purified.

Hangzhou Huaan Biotechnology Co., Ltd.

Orders:0086-571-88062880

Technical:0086-571-89986345

Service mail:support@huabio.cn

 华安生物
HUABIO
www.huabio.cn

Images

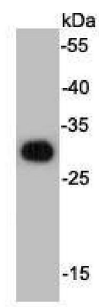


Fig1: Western blot analysis on HSV tagged fusion protein.

Note: All products are "FOR RESEARCH USE ONLY AND ARE NOT INTENDED FOR DIAGNOSTIC OR THERAPEUTIC USE".

Hangzhou Huaan Biotechnology Co., Ltd.

Orders:0086-571-88062880

Technical:0086-571-89986345

Service mail:support@huabio.cn

 华安生物
HUABIO
www.huabio.cn