

Anti-S tag Antibody

R1401-17



Product Type:	Rabbit polyclonal IgG, primary antibodies
Species reactivity:	Species independent
Applications:	WB, ELISA

Description: S-tag is the name of an oligopeptide derived from pancreatic ribonuclease A. The amino acid sequence of the S-tag is: Lys-Glu-Thr-Ala-Ala-Ala-Lys-Phe-Glu-Arg-Gln-His-Met-Asp-Ser. It is believed that the peptide with its abundance of charged and polar residues could improve solubility of proteins it is attached to. This antibody recognizes the s-tag fused to either the amino- or carboxy-terminus of targeted proteins.

Immunogen: Recombinant protein fused with S Tag.

Positive control: S tagged fusion protein

Recommended Dilutions:

WB	1:5,000-1:10,000
ELISA	1:10,000

Storage Buffer: 1*PBS (pH7.4), 0.2% BSA, 40% Glycerol. Preservative: 0.05% Sodium Azide.

Storage Instruction: Shipped at 4°C. Store at +4°C short term (1-2 weeks). It is recommended to aliquot into single-use upon delivery. Store at -20°C long term.

Purity: Immunogen affinity purified.

Hangzhou Huaan Biotechnology Co., Ltd.

Orders:0086-571-88062880

Technical:0086-571-89986345

Service mail:support@huabio.cn

 华安生物
HUABIO
www.huabio.cn

Images

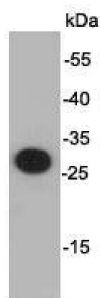


Fig1: Western blot analysis on S tagged fusion protein.

Note: All products are "FOR RESEARCH USE ONLY AND ARE NOT INTENDED FOR DIAGNOSTIC OR THERAPEUTIC USE".

Hangzhou Huaan Biotechnology Co., Ltd.

Orders:0086-571-88062880

Technical:0086-571-89986345

Service mail:support@huabio.cn

 华安生物
HUABIO
www.huabio.cn