

# Anti-KT3 tag Antibody

## R1401-16



<b>Product Type:</b>	Rabbit polyclonal IgG, primary antibodies
<b>Species reactivity:</b>	Species independent
<b>Applications:</b>	WB, ELISA

**Description:** SV40 KT3 tag is derived from the carboxy-terminus of Simian Virus 40 large T antigen. These constructs contain a C-terminal KT3 tag, which is an 11amino-acid epitope. This antibody recognizes the KT3-tag fused to either the amino- or carboxy-terminus of targeted proteins.

**Immunogen:** Recombinant protein fused with KT3 Tag.

**Positive control:** KT3 tagged fusion protein

**Recommended Dilutions:**

<b>WB</b>	1:5,000-1:10,000
<b>ELISA</b>	1:10,000

**Storage Buffer:** 1\*PBS (pH7.4), 0.2% BSA, 40% Glycerol. Preservative: 0.05% Sodium Azide.

**Storage Instruction:** Store at +4℃ after thawing. Aliquot store at -20℃ or -80℃. Avoid repeated freeze / thaw cycles.

**Purity:** Immunogen affinity purified.

Hangzhou Huaan Biotechnology Co., Ltd.

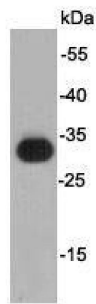
Orders:0086-571-88062880

Technical:0086-571-89986345

Service mail:support@huabio.cn

 华安生物  
HUABIO  
www.huabio.cn

Images



**Fig1:** Western blot analysis on KT3 tagged fusion protein.

---

**Note:** All products are "FOR RESEARCH USE ONLY AND ARE NOT INTENDED FOR DIAGNOSTIC OR THERAPEUTIC USE".

---

Hangzhou Huaan Biotechnology Co., Ltd.

Orders:0086-571-88062880

Technical:0086-571-89986345

Service mail:support@huabio.cn

 华安生物  
HUABIO  
www.huabio.cn