

Anti-IGF1R Antibody

R1310-6



Product Type:	Rabbit polyclonal IgG, primary antibodies
Species reactivity:	Human
Applications:	WB, IHC-P
Molecular Wt:	~95kDa

Description: Type I insulin-like growth factor receptor (IGF-IR) is a transmembrane receptor tyrosine kinase that is widely expressed in many cell lines and cell types within fetal and postnatal tissues. The activated IGF1R is involved in cell growth and survival control. IGF1R is crucial for tumor transformation and survival of malignant cell. Ligand binding activates the receptor kinase, leading to receptor autophosphorylation, and tyrosines phosphorylation of multiple substrates, that function as signaling adapter proteins including, the insulin-receptor substrates (IRS1/2), Shc and 14-3-3 proteins. Phosphorylation of IRSs proteins lead to the activation of two main signaling pathways: the PI3K-AKT/PKB pathway and the Ras-MAPK pathway. The result of activating the MAPK pathway is increased cellular proliferation, whereas activating the PI3K pathway inhibits apoptosis and stimulates protein synthesis.

Immunogen: Recombinant protein with Human IGF1R aa 627-952 / 1,367.

Positive control: HepG2, SKOV-3, Hela, A549, 293T, human breast carcinoma tissue

Subcellular location: Nucleus

Database links: SwissProt: P08069 Human

Recommended Dilutions:

WB	1:1,000
IHC-P	1:100

Storage Buffer: 1*PBS (pH7.4), 0.2% BSA, 40% Glycerol. Preservative: 0.05% Sodium Azide.

Storage Instruction: Shipped at 4°C. Store at +4°C short term (1-2 weeks). It is recommended to aliquot into single-use upon delivery. Store at -20°C long term.

Purity: Protein A affinity purified.

Hangzhou Huaan Biotechnology Co., Ltd.

Orders:0086-571-88062880

Technical:0086-571-89986345

Service mail:support@huabio.cn

 华安生物
HUABIO
www.huabio.cn

Images

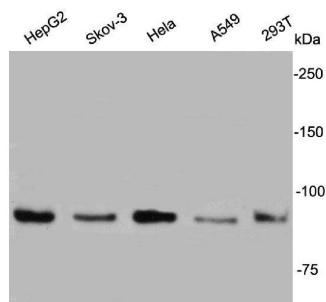


Fig1: Western blot analysis on cell lysates using anti- IGF1R rabbit polyclonal antibodies.

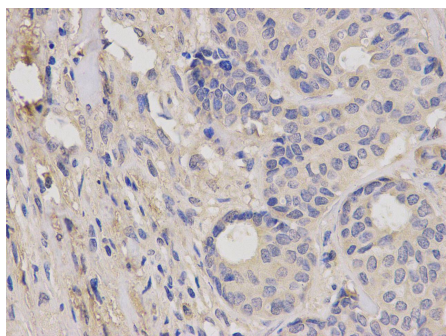


Fig2: Immunohistochemical analysis of paraffin-embedded human breast carcinoma tissue using anti- IGF1R rabbit polyclonal antibody.

Note: All products are "FOR RESEARCH USE ONLY AND ARE NOT INTENDED FOR DIAGNOSTIC OR THERAPEUTIC USE".

Background References

1. "The insulin-like growth factor 1 receptor in cancer: old focus, new future." Hartog H., Wesseling J., Boezen H.M., van der Graaf W.T. Eur. J. Cancer 43:1895-1904(2007)
2. "Polyubiquitination of insulin-like growth factor I receptor (IGF-IR) activation loop promotes antibody-induced receptor internalization and down-regulation." Mao Y., Shang Y., Pham V.C., Ernst J.A., Lill J.R., Scales S.J., Zha J. J. Biol. Chem. 286:41852-41861(2011)

Hangzhou Huaan Biotechnology Co., Ltd.

Orders:0086-571-88062880

Technical:0086-571-89986345

Service mail:support@huabio.cn


 华安生物
 HUABIO
www.huabio.cn