

Anti-Stella Antibody

R1306-1



Product Type:	Rabbit polyclonal IgG, primary antibodies
Species reactivity:	Human, Mouse, Zebrafish
Applications:	WB, IHC-P
Molecular Wt:	Predicted band size: 18 kDa

Description: Stella is a primordial germ cell (PGCs)-specific protein involved in epigenetic chromatin reprogramming in the zygote following fertilization. It participates in protection of DNA methylation in the maternal pronucleus by preventing conversion of 5mC to 5hmC: specifically recognizes and binds histone H3 dimethylated at 'Lys-9' (H3K9me2) on maternal genome, and protects maternal genome from TET3-mediated conversion to 5hmC and subsequent DNA demethylation. It is important for the totipotent/pluripotent states continuing through preimplantation development.

Immunogen: Synthetic peptide within mouse Stella aa 101-150 / 150 (ID:Q8QZY).

Positive control: HeLa cell lysate, HEK-293 cell lysate, F9 cell lysate, NCCIT cell lysate, mouse teratoma tissue.

Subcellular location: Cell nucleus, cytoplasm

Database links: SwissProt: Q6W0C5 Human
Entrez Gene: 73708 Mouse

Recommended Dilutions:

WB	1:1,000-1:2,000
IHC-P	1:100-1:200

Storage Buffer: 1*PBS (pH7.4), 0.2% BSA, 40% Glycerol. Preservative: 0.05% Sodium Azide.

Storage Instruction: Store at +4°C after thawing. Aliquot store at -20°C or -80°C. Avoid repeated freeze / thaw cycles.

Purity: Immunogen affinity purified.

Hangzhou Huaan Biotechnology Co., Ltd.

Orders:0086-571-88062880

Technical:0086-571-89986345

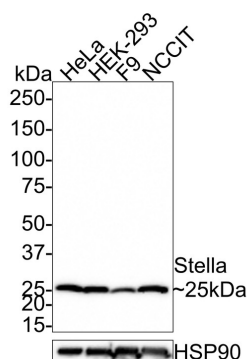
Service mail:support@huabio.cn

 华安生物
HUABIO
www.huabio.cn

Images

Fig1: Western blot analysis of Stella on different lysates with Rabbit anti-Stella antibody (R1306-1) at 1/1,000 dilution.

Lane 1: HeLa cell lysate
Lane 2: HEK-293 cell lysate
Lane 3: F9 cell lysate
Lane 4: NCCIT cell lysate



Lysates/proteins at 20 µg/Lane.

Predicted band size: 18 kDa
Observed band size: 25 kDa

Exposure time: 1 minute 30 seconds;

4-20% SDS-PAGE gel.

Proteins were transferred to a PVDF membrane and blocked with 5% NFDM/TBST for 1 hour at room temperature. The primary antibody (R1306-1) at 1/1,000 dilution was used in 5% NFDM/TBST at room temperature for 2 hours. Goat Anti-Rabbit IgG - HRP Secondary Antibody (HA1001) at 1:100,000 dilution was used for 1 hour at room temperature.

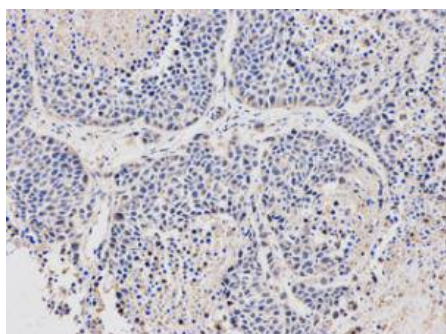


Fig2: Immunohistochemical analysis of paraffin-embedded mouse teratoma tissue using anti-Stella rabbit polyclonal antibody.

Note: All products are "FOR RESEARCH USE ONLY AND ARE NOT INTENDED FOR DIAGNOSTIC OR THERAPEUTIC USE".

Background References

1. "Human STELLAR, NANOG, and GDF3 genes are expressed in pluripotent cells and map to chromosome 12p13, a hotspot for teratocarcinoma." Clark A.T., Rodriguez R.T., Bodnar M.S., Abeyta M.J., Cedars M.I., Turek P.J., Firpo M.T., Reijo Pera R.A. *Stem Cells* 22:169-179(2004)
2. "Dppa3 is a marker of pluripotency and has a human homologue that is expressed in germ cell tumours." Bowles J., Teasdale R.P., James K., Koopman P. *Cytogenet. Genome Res.* 101:261-265(2003)

Hangzhou Huan Biotechnology Co., Ltd.

Orders:0086-571-88062880

Technical:0086-571-89986345

Service mail:support@huabio.cn

华安生物
HUABIO
www.huabio.cn