

Anti-Geminin Antibody

R1204-2



Product Type:	Rabbit polyclonal IgG, primary antibodies
Species reactivity:	Human, Mouse, Rat
Applications:	WB, IF-Cell, FC
Molecular Wt:	24 kDa

Description: Geminin is a nuclear protein that is present in most eukaryotes and highly conserved across species. Numerous functions have been elucidated for Geminin including roles in metazoan cell cycle, cellular proliferation, cell lineage commitment, and neural differentiation. During S phase, geminin is a negative regulator of DNA replication. In many cancer cell lines, inhibition of geminin by RNAi results in re-replication of portions of the genome, which leads to aneuploidy.

Immunogen: Synthetic peptide within Human Geminin aa 1-50 / 209.

Positive control: Hela cell lysates, NCCIT, F9, HepG2.

Subcellular location: Nucleus, cytoplasm

Database links: SwissProt: O75496 Human | O88513 Mouse

Recommended Dilutions:

WB	1:500
IF-Cell	1:50
FC	1:50-1:100

Storage Buffer: 1*PBS (pH7.4), 0.2% BSA, 40% Glycerol. Preservative: 0.05% Sodium Azide.

Storage Instruction: Shipped at 4°C. Store at +4°C short term (1-2 weeks). It is recommended to aliquot into single-use upon delivery. Store at -20°C long term.

Purity: Immunogen affinity purified.

Hangzhou Huaan Biotechnology Co., Ltd.

Orders: 0086-571-88062880

Technical: 0086-571-89986345

Service mail: support@huabio.cn

 华安生物
HUABIO
www.huabio.cn

Applications: WB=Western blot IHC-P=Immunohistochemistry (paraffin) IF-Cell=Immunofluorescence (Cell) IF-Tissue=Immunofluorescence (Tissue) FC=Flow cytometry IP=Immunoprecipitation

Images

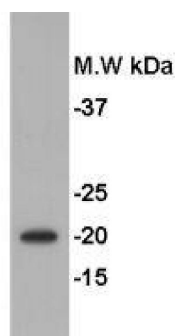


Fig1: Western blot analysis of Geminin on HeLa cell lysates. Proteins were transferred to a PVDF membrane and blocked with 5% BSA in PBS for 1 hour at room temperature. The primary antibody (R1204-2, 1/500) was used in 5% BSA at room temperature for 2 hours. Goat Anti-Rabbit IgG - HRP Secondary Antibody (HA1001) at 1:5,000 dilution was used for 1 hour at room temperature.

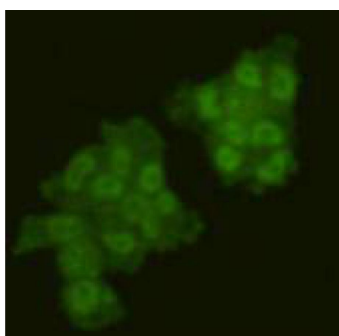


Fig2: ICC staining of Geminin in NCCIT cells (green). Formalin fixed cells were permeabilized with 0.1% Triton X-100 in TBS for 10 minutes at room temperature and blocked with 1% Blocker BSA for 15 minutes at room temperature. Cells were probed with the primary antibody (R1204-2, 1/50) for 1 hour at room temperature, washed with PBS. Alexa Fluor®488 Goat anti-Rabbit IgG was used as the secondary antibody at 1/1,000 dilution. The nuclear counter stain is DAPI (blue).

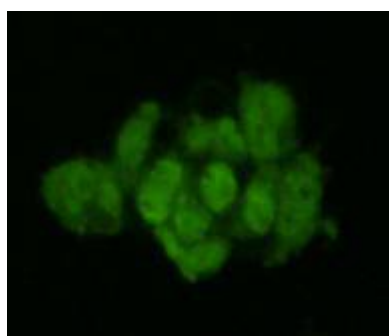


Fig3: ICC staining of Geminin in F9 cells (green). Formalin fixed cells were permeabilized with 0.1% Triton X-100 in TBS for 10 minutes at room temperature and blocked with 1% Blocker BSA for 15 minutes at room temperature. Cells were probed with the primary antibody (R1204-2, 1/50) for 1 hour at room temperature, washed with PBS. Alexa Fluor®488 Goat anti-Rabbit IgG was used as the secondary antibody at 1/1,000 dilution. The nuclear counter stain is DAPI (blue).

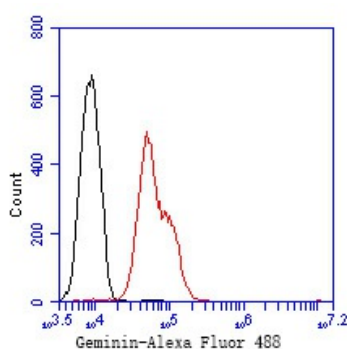


Fig4: Flow cytometric analysis of Geminin was done on HepG2 cells. The cells were fixed, permeabilized and stained with the primary antibody (R1204-2, 1/50) (red). After incubation of the primary antibody at room temperature for an hour, the cells were stained with a Alexa Fluor 488-conjugated Goat anti-Rabbit IgG Secondary antibody at 1/1000 dilution for 30 minutes. Unlabelled sample was used as a control (cells without incubation with primary antibody; black).

Hangzhou Huaan Biotechnology Co., Ltd.

Orders: 0086-571-88062880

Technical: 0086-571-89986345

Service mail: support@huabio.cn

华安生物
HUABIO
www.huabio.cn

Applications: WB=Western blot IHC-P=Immunohistochemistry (paraffin) IF-Cell=Immunofluorescence (Cell) IF-Tissue=Immunofluorescence (Tissue) FC=Flow cytometry IP=Immunoprecipitation

Note: All products are "FOR RESEARCH USE ONLY AND ARE NOT INTENDED FOR DIAGNOSTIC OR THERAPEUTIC USE".

Background References

1. Pitulscu M, Kessel M, Luo L. The regulation of embryonic patterning and DNA replication by geminin. *Cell Mol Life Sci*, 2005, 62 (13): 1425~1433.
2. Achibana K E, Gonzalez M A, Guarguaglini G, et al. Depletion of licensing inhibitor geminin causes centrosome overduplication and mitotic defects. *EMBO Rep*, 2005, 6 (11): 1052~1057.
3. Kulartz M, Knippers R. The replicative regulator protein geminin on chromatin in the HeLa cell cycle. *J Biol Chem*, 2004, 279 (40): 41686~41694.

Hangzhou Huaan Biotechnology Co., Ltd.

Orders: 0086-571-88062880

Technical: 0086-571-89986345

Service mail: support@huabio.cn

 华安生物
HUAABIO
www.huabio.cn

Applications: WB=Western blot IHC-P=Immunohistochemistry (paraffin) IF-Cell=Immunofluorescence (Cell) IF-Tissue=Immunofluorescence (Tissue) FC=Flow cytometry IP=Immunoprecipitation