

# Anti-Lamin B2 Antibody [D5-C2]

## M1505-11



<b>Product Type:</b>	Mouse monoclonal IgG2b, primary antibodies
<b>Species reactivity:</b>	Human, Mouse, Rat, Zebrafish
<b>Applications:</b>	WB, IF-Cell, IHC-P
<b>Molecular Wt:</b>	Predicted band size: 70 kDa
<b>Clone number:</b>	D5-C2

**Description:** Lamins are components of the nuclear lamina, a fibrous layer on the nucleoplasmic side of the inner nuclear membrane, which is thought to provide a framework for the nuclear envelope and may also interact with chromatin. B-type lamins undergo a series of modifications, such as farnesylation and phosphorylation. Increased phosphorylation of the lamins occurs before envelope disintegration and probably plays a role in regulating lamin associations.

**Immunogen:** Synthetic peptide within Human Lamin B2 aa 571-620 / 620.

**Positive control:** Jurkat cell lysates, hybrid fish (crucian-carp) brain tissue lysates, human uterine tissue.

**Subcellular location:** Nucleus inner membrane

**Database links:** SwissProt: Q03252 Human | Q62733 Rat | P21619 Mouse | B3DFN3 Zebrafish

**Recommended Dilutions:**

<b>WB</b>	1:1,000-1:2,000
<b>IF-Cell</b>	1:200-1:500
<b>IHC-P</b>	1:500-1:1000

**Storage Buffer:** 1\*PBS (pH7.4), 0.2% BSA, 40% Glycerol. Preservative: 0.05% Sodium Azide.

**Storage Instruction:** Shipped at 4°C. Store at +4°C short term (1-2 weeks). It is recommended to aliquot into single-use upon delivery. Store at -20°C long term.

**Purity:** Protein A affinity purified.

Hangzhou Huaan Biotechnology Co., Ltd.

Orders: 0086-571-88062880

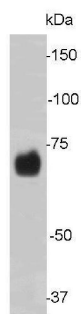
Technical: 0086-571-89986345

Service mail: support@huabio.cn

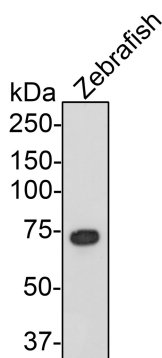
华安生物  
HUABIO  
www.huabio.cn

Applications: WB=Western blot IHC-P=Immunohistochemistry (paraffin) IF-Cell=Immunofluorescence (Cell) IF-Tissue=Immunofluorescence (Tissue) FC=Flow cytometry IP=Immunoprecipitation

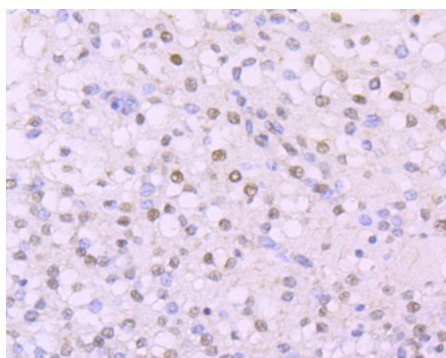
## Images



**Fig1:** Western blot analysis of Lamin B2 on Jurkat cell lysate using anti-Lamin B2 antibody at 1/500 dilution.



**Fig2:** Western blot analysis of Lamin B2 on zebrafish tissue lysate using anti-Lamin B2 antibody at 1/500 dilution.



**Fig3:** Immunohistochemical analysis of paraffin-embedded human uterine tissue with Mouse anti-Lamin B2 antibody (M1505-11) at 1/1000 dilution.

The section was pre-treated using heat mediated antigen retrieval with Tris-EDTA buffer (pH 9.0) for 20 minutes. The tissues were blocked in 1% BSA for 20 minutes at room temperature, washed with ddH<sub>2</sub>O and PBS, and then probed with the primary antibody (M1505-11) at 1/1000 dilution for 1 hour at room temperature. The detection was performed using an HRP conjugated compact polymer system. DAB was used as the chromogen. Tissues were counterstained with hematoxylin and mounted with DPX.

**Note:** All products are "FOR RESEARCH USE ONLY AND ARE NOT INTENDED FOR DIAGNOSTIC OR THERAPEUTIC USE".

## Background References

1. "Sequencing of the reannotated LMNB2 gene reveals novel mutations in patients with acquired partial lipodystrophy." Hegele R.A., Cao H., Liu D.M., Costain G.A., Charlton-Menys V., Rodger N.W., Durrington P.N. Am. J. Hum. Genet. 79:383-389(2006)
2. "System-wide temporal characterization of the proteome and phosphoproteome of human embryonic stem cell differentiation." Rigbolt K.T., Prokhorova T.A., Akimov V., Henningsen J., Johansen P.T., Kratchmarova I., Kassem M., Mann M., Olsen J.V., Blagoev B. Sci. Signal. 4:RS3-RS3(2011)

Hangzhou Huaan Biotechnology Co., Ltd.

Orders:0086-571-88062880

Technical:0086-571-89986345

Service mail:support@huabio.cn

华安生物  
HUAABIO  
www.huabio.cn

Applications:WB=Western blot IHC-P=Immunohistochemistry (paraffin) IF-Cell=Immunofluorescence (Cell) IF-Tissue=Immunofluorescence (Tissue) FC=Flow cytometry IP=Immunoprecipitation