

Anti-Lamin B2 Antibody [J9-C4]

M1505-10



Product Type:	Mouse monoclonal IgG1, primary antibodies
Species reactivity:	Human
Applications:	WB, IHC-P
Molecular Wt:	Predicted band size: 70 kDa
Clone number:	J9-C4

Description: Lamins are components of the nuclear lamina, a fibrous layer on the nucleoplasmic side of the inner nuclear membrane, which is thought to provide a framework for the nuclear envelope and may also interact with chromatin. B-type lamins undergo a series of modifications, such as farnesylation and phosphorylation. Increased phosphorylation of the lamins occurs before envelope disintegration and probably plays a role in regulating lamin associations.

Immunogen: Synthetic peptide within Human Lamin B2 aa 1-50 / 620.

Positive control: Jurkat cell lysates, human lung cancer tissue.

Subcellular location: Nucleus lamina.

Database links: SwissProt: Q03252 Human

Recommended Dilutions:

WB	1:1,000-1:2,000
IHC-P	1:500-1:2,000

Storage Buffer: 1*PBS (pH7.4), 0.2% BSA, 40% Glycerol. Preservative: 0.05% Sodium Azide.

Storage Instruction: Shipped at 4°C. Store at +4°C short term (1-2 weeks). It is recommended to aliquot into single-use upon delivery. Store at -20°C long term.

Purity: Protein A affinity purified.

Hangzhou Huaan Biotechnology Co., Ltd.

Orders: 0086-571-88062880

Technical: 0086-571-89986345

Service mail: support@huabio.cn

 华安生物
HUABIO
www.huabio.cn

Applications: WB=Western blot IHC-P=Immunohistochemistry (paraffin) IF-Cell=Immunofluorescence (Cell) IF-Tissue=Immunofluorescence (Tissue) FC=Flow cytometry IP=Immunoprecipitation

Images

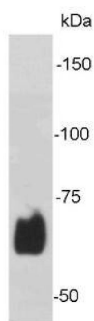


Fig1: Western blot analysis on Jurkat cell lysates using anti-Lamin B2 mouse mAb.

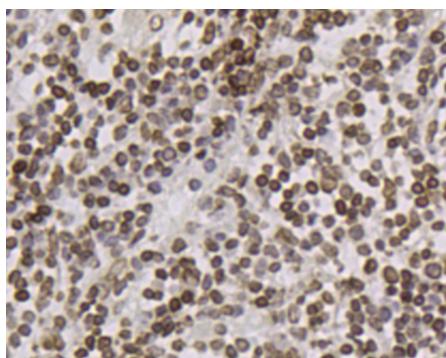


Fig2: Immunohistochemical analysis of paraffin-embedded human lung cancer tissue with Mouse anti-Lamin B2 antibody (M1505-10) at 1/1000 dilution.

The section was pre-treated using heat mediated antigen retrieval with Tris-EDTA buffer (pH 9.0) for 20 minutes. The tissues were blocked in 1% BSA for 20 minutes at room temperature, washed with ddH₂O and PBS, and then probed with the primary antibody (M1505-10) at 1/1000 dilution for 1 hour at room temperature. The detection was performed using an HRP conjugated compact polymer system. DAB was used as the chromogen. Tissues were counterstained with hematoxylin and mounted with DPX.

Note: All products are "FOR RESEARCH USE ONLY AND ARE NOT INTENDED FOR DIAGNOSTIC OR THERAPEUTIC USE".

Background References

1. Li Y et al. The role of lamin B2 in human diseases. Gene. 2023 Jun
2. Payumo AY et al. Lamin B2, Guardian of Cardiomyocyte Nuclear Division. Dev Cell. 2020 Apr

Hangzhou Huaan Biotechnology Co., Ltd.

Orders: 0086-571-88062880

Technical: 0086-571-89986345

Service mail: support@huabio.cn

华安生物
HUABIO
www.huabio.cn

Applications: WB=Western blot IHC-P=Immunohistochemistry (paraffin) IF-Cell=Immunofluorescence (Cell) IF-Tissue=Immunofluorescence (Tissue) FC=Flow cytometry IP=Immunoprecipitation