

Anti-CHD1 Antibody [2-2]

M1211-5



Product Type:	Mouse monoclonal IgG1, primary antibodies
Species reactivity:	Mouse, Human
Applications:	WB, IHC-P
Molecular Wt:	Predicted band size: 197 kDa
Clone number:	2-2

Description: Chromodomain-helicase-DNA-binding domain (CHD) proteins have been identified in a variety of organisms. This family of proteins, which consists of nine members, has been divided into three separate subfamilies. All of the CHD proteins contain two tandem N-terminal chromodomains, a SWI/SNF-related ATPase domain, and a C-terminal DNA binding domain. CHD1 may play an important role in gene regulation.

Immunogen: Recombinant protein within Human CHD1 aa 1,479-1,710 / 1,710.

Positive control: Recombinant protein, mouse testis tissue.

Subcellular location: Cytoplasm, Nucleus.

Database links: SwissProt: O14646 Human

Recommended Dilutions:

WB	1:1,000
IHC-P	1:100

Storage Buffer: 1*PBS (pH7.4), 0.2% BSA, 40% Glycerol. Preservative: 0.05% Sodium Azide.

Storage Instruction: Store at +4°C after thawing. Aliquot store at -20°C or -80°C. Avoid repeated freeze / thaw cycles.

Purity: Protein A affinity purified.

Hangzhou Huaan Biotechnology Co., Ltd.

Orders: 0086-571-88062880

Technical: 0086-571-89986345

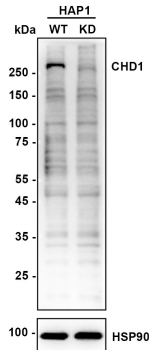
Service mail: support@huabio.cn

 华安生物
HUABIO
www.huabio.cn

Images

Fig1: Western blot analysis of CHD1 on different lysates with Mouse anti-CHD1 antibody (M1211-5) at 1/1,000 dilution.

Lane 1: HAP1-parental cell lysate
Lane 2: HAP1-CHD1 KD cell lysate



Lysates/proteins at 10 µg/Lane.

Predicted band size: 200 kDa
Observed band size: 260 kDa

Exposure time: 40 seconds; ECL: K1801;

4-20% SDS-PAGE gel.

Proteins were transferred to a PVDF membrane and blocked with 5% NFDM/TBST for 1 hour at room temperature. The primary antibody (M1211-5) at 1/1,000 dilution was used in K1803 at 4°C overnight. Goat Anti-Mouse IgG - HRP Secondary Antibody (HA1006) at 1/50,000 dilution was used for 1 hour at room temperature.



Fig2: Western blot analysis on recombinant protein using anti-CHD1 Mouse mAb (Cat. # M1211-5).

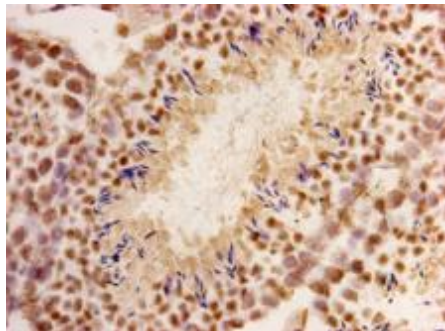


Fig3: Immunohistochemical analysis of paraffin- embedded mouse testis tissue using anti-CHD1 Mouse mAb (Cat. # M1211-5).

Note: All products are "FOR RESEARCH USE ONLY AND ARE NOT INTENDED FOR DIAGNOSTIC OR THERAPEUTIC USE".

Hangzhou Huaan Biotechnology Co., Ltd.

Orders:0086-571-88062880

Technical:0086-571-89986345

Service mail:support@huabio.cn

华安生物
HUABIO
www.huabio.cn

Applications:WB=Western blot IHC-P=Immunohistochemistry (paraffin) IF-Cell=Immunofluorescence (Cell) IF-Tissue=Immunofluorescence (Tissue) FC=Flow cytometry IP=Immunoprecipitation

2. Human but not yeast CHD1 binds directly and selectively to histone H3 methylated at lysine 4 via its tandem

