

Anti-HP1 alpha Antibody [B0-1]

M1211-2



Product Type:	Mouse monoclonal IgG1, primary antibodies
Species reactivity:	Human, Mouse, Rat
Applications:	WB, IF-Cell
Molecular Wt:	Predicted band size: 22 kDa
Clone number:	B0-1

Description: Chromobox protein homolog 5 is a protein that in humans is encoded by the CBX5 gene. It is a highly conserved, non-histone protein part of the heterochromatin family. The protein itself is more commonly called (in humans) HP1 α . Heterochromatin protein-1 (HP1) has an N-terminal domain that acts on methylated lysines residues leading to epigenetic repression. The C-terminal of this protein has a chromo shadow-domain (CSD) that is responsible for homodimerizing, as well as interacting with a variety of chromatin-associated, non-histone proteins. HP1 α is a highly evolutionary conserved protein, existing in species such as *Schizosaccharomyces pombe*, a type of yeast, all the way to humans. The N-terminal chromodomain and C-terminal chromoshadow domain appear to be much more conserved (approximately 50-70% amino acid similarity) than the hinge region (approximately 25-30% similarity with the *Drosophila* HP1 homolog).

Immunogen: Recombinant protein within Human HP1 alpha aa 1-191 / 191.

Positive control: HeLa cell lysate, MCF7 cell lysate, NIH/3T3 cell lysate, RAW264.7 cell lysate, C6 cell lysate, PC-12 cell lysate, MCF7.

Subcellular location: Nucleus

Database links: SwissProt: P45973 Human | Q61686 Mouse
Entrez Gene: 300266 Rat

Recommended Dilutions:

WB	1:1,000
IF-Cell	1:500

Storage Buffer: 1*PBS (pH7.4), 0.2% BSA, 40% Glycerol. Preservative: 0.05% Sodium Azide.

Storage Instruction: Shipped at 4°C. Store at +4°C short term (1-2 weeks). It is recommended to aliquot into single-use upon delivery. Store at -20°C long term.

Purity: Protein A affinity purified.

Hangzhou Huaan Biotechnology Co., Ltd.

Orders: 0086-571-88062880

Technical: 0086-571-89986345

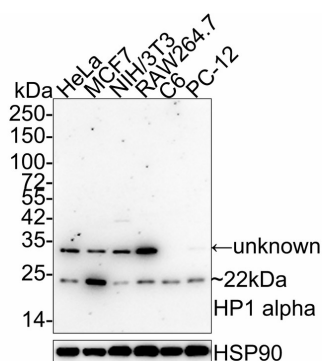
Service mail: support@huabio.cn

华安生物
HUABIO
www.huabio.cn

Applications: WB=Western blot IHC-P=Immunohistochemistry (paraffin) IF-Cell=Immunofluorescence (Cell) IF-Tissue=Immunofluorescence (Tissue) FC=Flow cytometry IP=Immunoprecipitation

Images

Fig1: Western blot analysis of HP1 alpha on different lysates with Mouse anti-HP1 alpha antibody (M1211-2) at 1/1,000 dilution.



Lane 1: HeLa cell lysate (10 µg/Lane)
 Lane 2: MCF7 cell lysate (10 µg/Lane)
 Lane 3: NIH/3T3 cell lysate (10 µg/Lane)
 Lane 4: RAW264.7 cell lysate (10 µg/Lane)
 Lane 5: C6 cell lysate (10 µg/Lane)
 Lane 6: PC-12 cell lysate (10 µg/Lane)

Predicted band size: 22 kDa

Observed band size: 22 kDa

Exposure time: 1 minute 40 seconds;

4-20% SDS-PAGE gel.

Proteins were transferred to a PVDF membrane and blocked with 5% NFDM/TBST for 1 hour at room temperature. The primary antibody (M1211-2) at 1/1,000 dilution was used in 5% NFDM/TBST at 4°C overnight. Goat Anti-Mouse IgG - HRP Secondary Antibody (HA1006) at 1/50,000 dilution was used for 1 hour at room temperature.

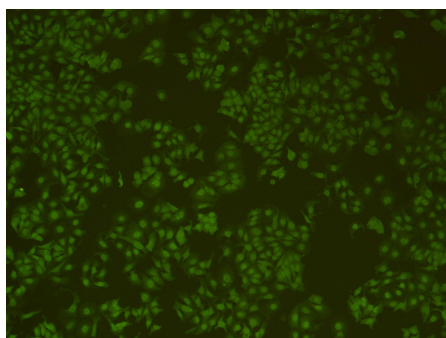


Fig2: Immunofluorescent staining of MCF-7 cells using anti-HP-1α Mouse mAb (Cat. # M1211-2).

Note: All products are "FOR RESEARCH USE ONLY AND ARE NOT INTENDED FOR DIAGNOSTIC OR THERAPEUTIC USE".

Background References

1. "Initial characterization of the human central proteome." Burkard T.R., Planyavsky M., Kaupe I., Breitwieser F.P., Buerckstuemmer T., Bennett K.L., Superti-Furga G., Colinge J. BMC Syst. Biol. 5:17-17(2011)
2. "Lamin A rod domain mutants target heterochromatin protein 1alpha and beta for proteasomal degradation by activation of F-box protein, FBXW10." Chaturvedi P., Parnai V.K. PLoS ONE 5:E10620-E10620(2010)

Hangzhou Huaan Biotechnology Co., Ltd.

Orders: 0086-571-88062880

Technical: 0086-571-89986345

Service mail: support@huabio.cn

华安生物
HUABIO
www.huabio.cn

Applications: WB=Western blot IHC-P=Immunohistochemistry (paraffin) IF-Cell=Immunofluorescence (Cell) IF-Tissue=Immunofluorescence (Tissue) FC=Flow cytometry IP=Immunoprecipitation