

HRP Conjugated Anti-Rabbit IgG kappa light chain Antibody [1-14]

M1208-2



Product Type:	Mouse monoclonal IgG1, primary antibodies
Species reactivity:	Rabbit
Applications:	WB, ELISA
Molecular Wt:	25 kDa
Clone number:	1-14

Description: This monoclonal antibody can be used to detect the κ light chain of rabbit immunoglobulin directly.

Conjugate: HRP-conjugated

Immunogen: Purified Rabbit IgG κ light chain

Positive control: Rabbit Serum

Subcellular location: secrete

Recommended Dilutions:

WB	1:5,000
ELISA	1:5,000

Storage Buffer: 1*PBS (pH7.4), 0.2% BSA, 40% Glycerol.

Storage Instruction: Store at -20°C

Purity: Immunogen affinity purified.

Hangzhou Huaan Biotechnology Co., Ltd.

Orders:0086-571-88062880

Technical:0086-571-89986345

Service mail:support@huabio.cn

 华安生物
HUABIO
www.huabio.cn

Images

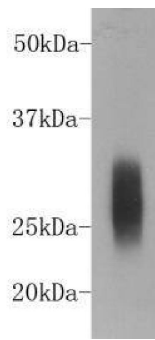


Fig1: Western blot analysis on rabbit serum using mouse anti-rabbit IgG κ light chain Conjugated HRP (Cat. # M1208-2) .

Note: All products are "FOR RESEARCH USE ONLY AND ARE NOT INTENDED FOR DIAGNOSTIC OR THERAPEUTIC USE".

Hangzhou Huaan Biotechnology Co., Ltd.

Orders:0086-571-88062880

Technical:0086-571-89986345

Service mail:support@huabio.cn

华安生物
HUABIO
www.huabio.cn