

# Anti-WSCD2 Antibody [9-F3]

## M1010-2



<b>Product Type:</b>	Mouse monoclonal IgM, primary antibodies
<b>Species reactivity:</b>	Human, Mouse, Rat
<b>Applications:</b>	WB, IF-Cell, IHC-P
<b>Molecular Wt:</b>	Predicted band size: 64 kDa
<b>Clone number:</b>	9-F3

**Description:** WSC domain-containing protein 2 (WSCD2) is a 565 amino acid, single-pass membrane protein that contains two WSC domains. The WSC domain is named after the yeast WSC1-WSC4 (cell wall integrity and stress response components 1-4) proteins, which each contain a WSC domain, and is a putative carbohydrate binding domain that spans about 90 amino acids. Containing eight conserved cysteine residues, which are predicted to form disulfide bridges, WSC domains are often found with other domains, such as LDL-receptor class A, PKD and C-type lectin. Two isoforms of WSCD2 exist as a result of alternative splicing events.

**Immunogen:** Recombinant protein with Human WSCD2 50-353 / 565.

**Positive control:** WSCD2 recombinant protein lysates, mouse hippocampus tissue lysate, rat brain tissue lysate, SH-SY5Y, human thyroid tissue, human liver cancer tissue, human uterus tissue.

**Subcellular location:** Membrane.

**Database links:** SwissProt: Q2TBF2 Human | D4PHA7 Mouse  
Entrez Gene: 360824 Rat

**Recommended Dilutions:**

<b>WB</b>	1:500-1:2,000
<b>IF-Cell</b>	1:50-1:200
<b>IHC-P</b>	1:100-1:500

**Storage Buffer:** 1\*PBS (pH7.4), 0.2% BSA, 50% Glycerol. Preservative: 0.05% Sodium Azide.

**Storage Instruction:** Shipped at 4°C. Store at +4°C short term (1-2 weeks). It is recommended to aliquot into single-use upon delivery. Store at -20°C long term.

**Purity:** Protein L affinity purified.

**Hangzhou Huaan Biotechnology Co., Ltd.**

Orders:0086-571-88062880

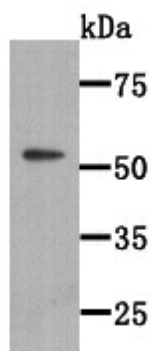
Technical:0086-571-89986345

Service mail:support@huabio.cn

 华安生物  
HUABIO  
www.huabio.cn

Applications:WB=Western blot IHC-P=Immunohistochemistry (paraffin) IF-Cell=Immunofluorescence (Cell) IF-Tissue=Immunofluorescence (Tissue) FC=Flow cytometry IP=Immunoprecipitation

## Images



**Fig1:** Western blot analysis of WSCD2 on WSCD2 recombinant protein lysate using anti-WSCD2 antibody at 1/2000 dilution.

**Fig2:** Western blot analysis of WSCD2 on different lysates with Mouse anti-WSCD2 antibody (M1010-2) at 1/500 dilution.

Lane 1: Mouse hippocampus tissue lysate

Lane 2: Rat brain tissue lysate

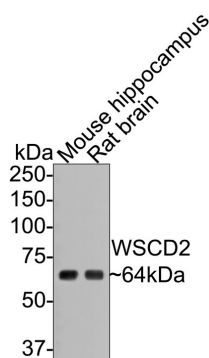
Lysates/proteins at 20 µg/Lane.

Predicted band size: 64 kDa

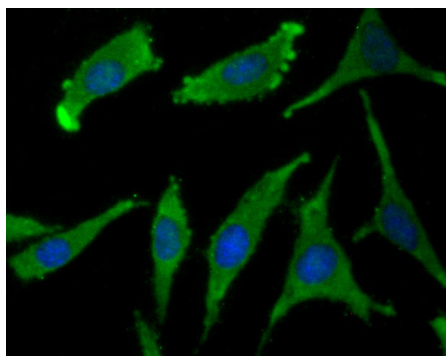
Observed band size: 64 kDa

Exposure time: 2 minutes;

8% SDS-PAGE gel.



Proteins were transferred to a PVDF membrane and blocked with 5% NFDM/TBST for 1 hour at room temperature. The primary antibody (M1010-2) at 1/500 dilution was used in 5% NFDM/TBST at room temperature for 2 hours. Goat Anti-Mouse IgG - HRP Secondary Antibody (HA1006) at 1:100,000 dilution was used for 1 hour at room temperature.



**Fig3:** ICC staining WSCD2 in SH-SY5Y cells (green). The nuclear counter stain is DAPI (blue). Cells were fixed in paraformaldehyde, permeabilised with 0.25% Triton X100/PBS.

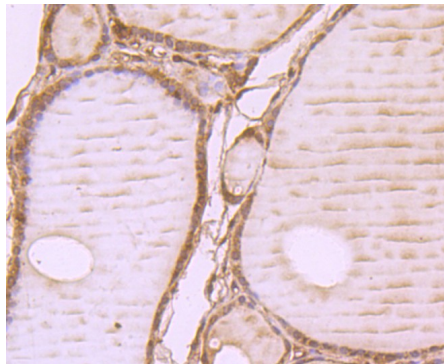
Hangzhou Huaan Biotechnology Co., Ltd.

Orders:0086-571-88062880

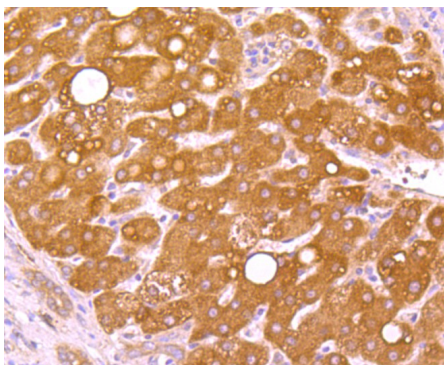
Technical:0086-571-89986345

Service mail:support@huabio.cn

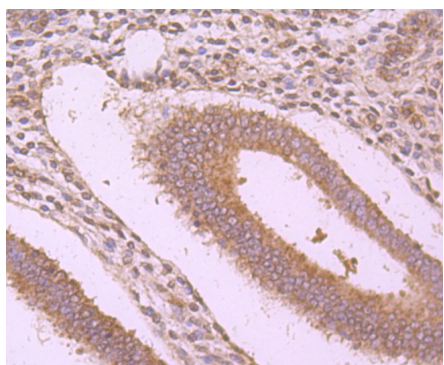
华安生物  
HUABIO  
www.huabio.cn



**Fig4:** Immunohistochemical analysis of paraffin-embedded human thyroid tissue using anti-WSCD2 antibody. Counter stained with



**Fig5:** Immunohistochemical analysis of paraffin-embedded human liver cancer tissue using anti-WSCD2 antibody. Counter stained with hematoxylin.



**Fig6:** Immunohistochemical analysis of paraffin-embedded human uterus tissue using anti-WSCD2 antibody. Counter stained with hematoxylin.

**Note:** All products are "FOR RESEARCH USE ONLY AND ARE NOT INTENDED FOR DIAGNOSTIC OR THERAPEUTIC USE".

### Background References

1. Tong SM et al. Subcellular localization of five singular WSC domain-containing proteins and their roles in Beauveria bassiana responses to stress cues and metal ions. Environ Microbiol Rep 8(2):295-304 (2016).
2. Gao C et al. A genome-wide linkage and association analysis of imputed insertions and deletions with cardiometabolic phenotypes in Mexican Americans: The Insulin Resistance Atherosclerosis Family Study. Genet Epidemiol 41(4):353-362 (2017).

Hangzhou Huaan Biotechnology Co., Ltd.

Orders:0086-571-88062880

Technical:0086-571-89986345

Service mail:support@huabio.cn

华安生物  
HUABIO  
www.huabio.cn

Applications:WB=Western blot IHC-P=Immunohistochemistry (paraffin) IF-Cell=Immunofluorescence (Cell) IF-Tissue=Immunofluorescence (Tissue) FC=Flow cytometry IP=Immunoprecipitation