

HRP Conjugated Mouse anti Goat IgG heavy chain Antibody [B7-A3]

M0910-7



Product Type:	Mouse monoclonal IgG1, primary antibodies
Species reactivity:	Goat
Applications:	WB, ELISA
Molecular Wt:	50 kDa
Clone number:	B7-A3

Description: The fundamental structure of IgG contains two identical heavy chains of about 50 kDa and two identical light chains of about 25 kDa, thus tetrameric quaternary structure. Light chain, which is usually same in a natural IgG molecule, includes κ chain and λ chain, but for antibody can exist in one body simultaneously. A heavy chain includes Fab- and Fc-Fragments. This monoclonal antibody is HRP conjugated and can be used to detect the heavy chain of goat immunoglobulin.

Conjugate: HRP-conjugated

Immunogen: Goat IgG

Positive control: Goat serum

Subcellular location: secrete

Recommended Dilutions:

WB	1:10,000
ELISA	1:10,000

Storage Buffer: 1*PBS (pH7.4), 0.2% BSA, 40% Glycerol.

Storage Instruction: Shipped at 4°C. Store at +4°C short term (1-2 weeks). It is recommended to aliquot into single-use upon delivery. Store at -20°C long term.

Purity: Immunogen affinity purified.

Hangzhou Huaan Biotechnology Co., Ltd.

Orders:0086-571-88062880

Technical:0086-571-89986345

Service mail:support@huabio.cn

 华安生物
HUABIO
www.huabio.cn

Images

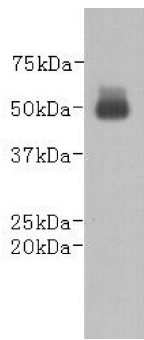


Fig1: Western blot analysis on goat serum using anti-Goat IgG heavy chain conjugated HRP Mouse mAb (Cat. # M0910-7).

Note: All products are "FOR RESEARCH USE ONLY AND ARE NOT INTENDED FOR DIAGNOSTIC OR THERAPEUTIC USE".

Hangzhou Huaan Biotechnology Co., Ltd.

Orders:0086-571-88062880

Technical:0086-571-89986345

Service mail:support@huabio.cn

华安生物
HUABIO
www.huabio.cn