

Anti-BCL6 Antibody

IRS097MS



Product Type:	Recombinant Mouse monoclonal IgG1, primary antibodies
Species reactivity:	Human
Applications:	mlHC
Molecular Wt:	Predicted band size: 79 kDa

Description:	The Bcl-6 protein (B-cell CLL/lymphoma 6, zinc finger protein 51) is a nuclear zinc finger transcription factor with an N-terminal POZ domain. Bcl-6 represses p53 transcription by binding 2 specific DNA sites within the p53 promoter region and accordingly, p53 expression is absent in germinal centre B-cells where Bcl-6 is highly expressed. Most notably, constitutive expression of Bcl-6 protects B-cell lines from apoptosis induced by DNA damage. Bcl-6 is mainly used in the classification of B-cell lymphomas. In malignant lymphomas, Bcl-6 protein is most commonly detected in germinal centre neoplasms including follicular lymphoma, Burkitt lymphoma, diffuse large B-cell lymphoma (40%), lymphocyte predominant Hodgkin lymphoma, and even in peripheral T-cell lymphoma with follicular localization ("follicular T cell lymphoma"). It is also found in CD30+ anaplastic large cell lymphoma. Bcl-6 expression is virtually absent in acute lymphatic leukaemia and mantle cell lymphoma. Normal tonsil is recommended as positive and negative tissue control. Virtually all the germinal centre B-cells must show a moderate to strong nuclear staining reaction, while an at least weak to moderate nuclear staining reaction must be seen in the majority of squamous epithelial cells. In the mantle zones and interfollicular areas only dispersed cells should display a positive nuclear staining reaction.
---------------------	--

Immunogen: Recombinant protein within Human BCL-6 aa 301-500 / 706.

Positive control: Human tonsil tissue.

Subcellular location: Nucleus.

Database links: SwissProt: P41182 Human

Recommended Dilutions:
mlHC 1:100

Storage Buffer: PBS (pH7.4), 0.1% BSA, 40% Glycerol. Preservative: 0.05% Sodium Azide.

Storage Instruction: Shipped at 4°C. Store at +4°C short term (1-2 weeks). It is recommended to aliquot into single-use upon delivery. Store at -20°C long term.

Purity: Protein A affinity purified.

Hangzhou Huaan Biotechnology Co., Ltd.

Orders: 0086-571-88062880

Technical: 0086-571-89986345

Service mail: support@huabio.cn

华安生物
HUABIO
www.huabio.cn

Applications: WB=Western blot IHC-P=Immunohistochemistry (paraffin) IF-Cell=Immunofluorescence (Cell) IF-Tissue=Immunofluorescence (Tissue) FC=Flow cytometry IP=Immunoprecipitation

Images

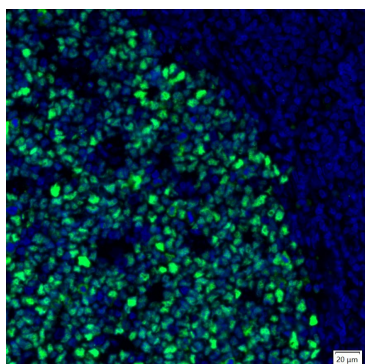


Fig1: mIHC analysis of human tonsil tissue (Formalin/PFA-fixed paraffin-embedded sections) with Mouse anti-BCL6 antibody (IRS097MS) at 1/100 dilution. The immunostaining was performed with the IRISKit® HyperView mTSA Kit (MH900206). Heat mediated antigen retrieval with Tris-EDTA buffer (pH 9.0) for 30 mins at 95°C. DAPI (blue) was used as a nuclear counter stain. Image acquisition was performed with Olympus VS200 Slide Scanner.

Note: All products are “FOR RESEARCH USE ONLY AND ARE NOT INTENDED FOR DIAGNOSTIC OR THERAPEUTIC USE”.

Background References

1. Guo J. et. al. BCL6 confers KRAS-mutant non-small-cell lung cancer resistance to BET inhibitors. J Clin Invest. 2021 Jan
2. Leeman-Neill RJ. et. al. BCL6 as a therapeutic target for lymphoma. Expert Opin Ther Targets. 2018 Feb

Hangzhou Huaan Biotechnology Co., Ltd.

Orders:0086-571-88062880

Technical:0086-571-89986345

Service mail:support@huabio.cn

华安生物
HUABIO
www.huabio.cn

Applications:WB=Western blot IHC-P=Immunohistochemistry (paraffin) IF-Cell=Immunofluorescence (Cell) IF-Tissue=Immunofluorescence (Tissue) FC=Flow cytometry IP=Immunoprecipitation