

# Anti-TGF beta Receptor I Antibody [PSH14-14] - BSA and Azide free

## HA751509



<b>Product Type:</b>	Recombinant Rabbit monoclonal IgG, primary antibodies
<b>Species reactivity:</b>	Human, Mouse, Rat
<b>Applications:</b>	WB, IP
<b>Molecular Wt:</b>	Predicted band size: 56 kDa
<b>Clone number:</b>	PSH14-14

**Description:** Transforming growth factor beta receptor I (activin A receptor type II-like kinase, 53kDa) is a membrane-bound TGF beta receptor protein of the TGF-beta receptor family for the TGF beta superfamily of signaling ligands. TGFBR1 is its human gene. The protein encoded by this gene forms a heteromeric complex with type II TGF- $\beta$  receptors when bound to TGF- $\beta$ , transducing the TGF- $\beta$  signal from the cell surface to the cytoplasm. The encoded protein is a serine/threonine protein kinase. Mutations in this gene have been associated with Loeys-Dietz aortic aneurysm syndrome (LDS, LDAS).

**Positive control:** THP-1 cell lysate, MCF7 cell lysate, SH-SY5Y cell lysate, Neuro-2a cell lysate, RAW264.7 cell lysate, C6 cell lysate.

**Subcellular location:** Cell membrane, Cell junction, tight junction, Cell surface, Membrane raft.

**Database links:** SwissProt: P36897 Human | Q64729 Mouse | P80204 Rat

**Recommended Dilutions:**

<b>WB</b>	1:2,000
<b>IP</b>	1-2 $\mu$ g/sample

**Storage Buffer:** PBS (pH7.4).

**Storage Instruction:** Store at +4 $^{\circ}$ C after thawing. Aliquot store at -20 $^{\circ}$ C. Avoid repeated freeze / thaw cycles.

**Purity:** Protein A affinity purified.

Hangzhou Huaan Biotechnology Co., Ltd.

Orders:0086-571-88062880

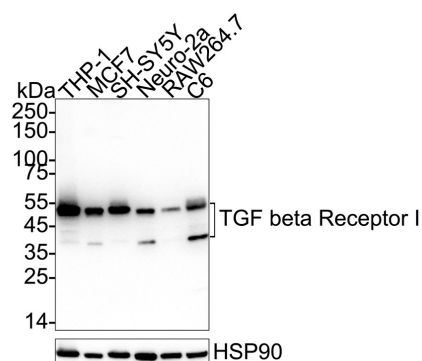
Technical:0086-571-89986345

Service mail:support@huabio.cn

 华安生物  
HUABIO  
www.huabio.cn

Applications:WB=Western blot IHC-P=Immunohistochemistry (paraffin) IF-Cell=Immunofluorescence (Cell) IF-Tissue=Immunofluorescence (Tissue) FC=Flow cytometry IP=Immunoprecipitation

## Images



**Fig1:** Western blot analysis of TGF beta Receptor I on different lysates with Rabbit anti-TGF beta Receptor I antibody (HA751509) at 1/2,000 dilution.

Lane 1: THP-1 cell lysate  
 Lane 2: MCF7 cell lysate  
 Lane 3: SH-SY5Y cell lysate  
 Lane 4: Neuro-2a cell lysate  
 Lane 5: RAW264.7 cell lysate  
 Lane 6: C6 cell lysate

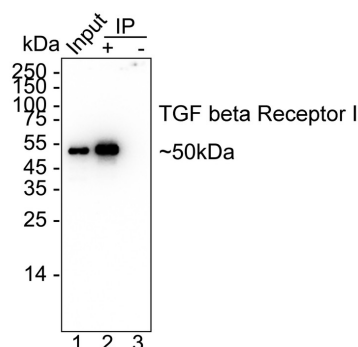
Lysates/proteins at 20 µg/Lane.

Predicted band size: 56 kDa  
 Observed band size: 50/37 kDa

Exposure time: 2 minutes; ECL: K1801;

4-20% SDS-PAGE gel.

Proteins were transferred to a PVDF membrane and blocked with 5% NFDM/TBST for 1 hour at room temperature. The primary antibody (HA751509) at 1/2,000 dilution was used in primary antibody dilution (K1803) at 4°C overnight. Goat Anti-Rabbit IgG - HRP Secondary Antibody (HA1001) at 1/50,000 dilution was used for 1 hour at room temperature.



**Fig2:** TGF beta Receptor I was immunoprecipitated from 0.2 mg THP-1 cell lysate with HA751509 at 2 µg/10 µl beads. Western blot was performed from the immunoprecipitate using HA751509 at 1/2,000 dilution. HRP Conjugated Anti-Rabbit IgG for IP Nano-secondary antibody at 1/5,000 dilution was used for 1 hour at room temperature.

Lane 1: THP-1 cell lysate (input)  
 Lane 2: HA751509 IP in THP-1 cell lysate  
 Lane 3: Rabbit IgG instead of HA751509 in THP-1 cell lysate

Blocking/Dilution buffer: 5% NFDM/TBST  
 Exposure time: 1 minute 7 seconds; ECL: K1801

Hangzhou Huaan Biotechnology Co., Ltd.

Orders:0086-571-88062880

Technical:0086-571-89986345

Service mail:support@huabio.cn

华安生物  
 HUABIO  
 www.huabio.cn

---

**Note:** All products are "FOR RESEARCH USE ONLY AND ARE NOT INTENDED FOR DIAGNOSTIC OR THERAPEUTIC USE".

---

### Background References

1. Wang J et al. Nestin promotes pulmonary fibrosis via facilitating recycling of TGF-beta receptor I. Eur Respir J. 2022 May
2. Ghorbaninejad M et al. TGF-beta receptor I inhibitor may restrict the induction of EMT in inflamed intestinal epithelial cells. Exp Biol Med (Maywood). 2023 Apr

**Hangzhou Huaan Biotechnology Co., Ltd.**

Orders:0086-571-88062880

Technical:0086-571-89986345

Service mail:support@huabio.cn

 华安生物  
HUAABIO  
www.huabio.cn

Applications:WB=Western blot IHC-P=Immunohistochemistry (paraffin) IF-Cell=Immunofluorescence (Cell) IF-Tissue=Immunofluorescence (Tissue) FC=Flow cytometry IP=Immunoprecipitation