

# Anti-Phospho-Syk (Y352) Antibody [PSH11-66] - BSA and Azide free

## HA751422



<b>Product Type:</b>	Recombinant Rabbit monoclonal IgG, primary antibodies
<b>Species reactivity:</b>	Human
<b>Applications:</b>	WB, IF-Cell, FC
<b>Molecular Wt:</b>	Predicted band size: 72 kDa
<b>Clone number:</b>	PSH11-66

**Description:** Tyrosine-protein kinase SYK, also known as spleen tyrosine kinase, is an enzyme which in humans is encoded by the SYK gene. SYK, along with ZAP70, is a member of the Syk family of tyrosine kinases. These cytoplasmic non-receptor tyrosine kinases share a characteristic dual SH2 domain separated by a linker domain. However, activation of SYK relies less on phosphorylation by Src family kinases than ZAP70. SYK and ZAP70 share a common evolutionary origin and split from a common ancestor in the jawed vertebrates. While Syk and ZAP70 are primarily expressed in hematopoietic tissues, a variety of tissues express Syk. Within B and T cells, respectively, Syk and ZAP70 transmit signals from the B-cell receptor and T-cell receptor. Syk plays a similar role in transmitting signals from a variety of cell surface receptors including CD74, Fc receptor, and integrins.

**Immunogen:** Synthetic phospho-peptide corresponding to residues surrounding Tyr352 of Human Syk.

**Positive control:** Ramos serum starved for 16 hours add 12µg/mL human IgM (diluted in serum free medium) for 2 minutes cell lysate, Ramos cells serum starved for 16 hours add 12µg/mL human IgM (diluted in serum free medium) for 2 minutes.

**Subcellular location:** Cell membrane, Cytoplasm, cytosol.

**Database links:** SwissProt: P43405 Human

**Recommended Dilutions:**

<b>WB</b>	1:5,000
<b>IF-Cell</b>	1:1,000
<b>FC</b>	1:1,000

**Storage Buffer:** PBS (pH7.4).

**Storage Instruction:** Store at +4℃ after thawing. Aliquot store at -20℃. Avoid repeated freeze / thaw cycles.

**Purity:** Protein A affinity purified.

Hangzhou Huaan Biotechnology Co., Ltd.

Orders:0086-571-88062880

Technical:0086-571-89986345

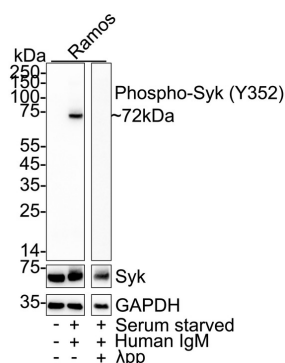
Service mail:support@huabio.cn

华安生物  
HUABIO  
www.huabio.cn

Applications:WB=Western blot IHC-P=Immunohistochemistry (paraffin) IF-Cell=Immunofluorescence (Cell) IF-Tissue=Immunofluorescence (Tissue) FC=Flow cytometry IP=Immunoprecipitation

## Images

**Fig1:** Western blot analysis of Phospho-Syk (Y352) on different lysates with Rabbit anti-Phospho-Syk (Y352) antibody (HA751422) at 1/5,000 dilution and pan Syk antibody at 1/1,000 dilution.



Lane 1: Ramos serum starved for 16 hours cell lysate

Lane 2: Ramos serum starved for 16 hours add 12 $\mu$ g/mL human IgM (diluted in serum free medium) for 2 minutes cell lysate

Lane 3: Ramos serum starved for 16 hours add 12 $\mu$ g/mL human IgM (diluted in serum free medium) for 2 minutes cell lysate, then the membrane treated with  $\lambda$ pp for 1 hour

Lysates/proteins at 20  $\mu$ g/Lane.

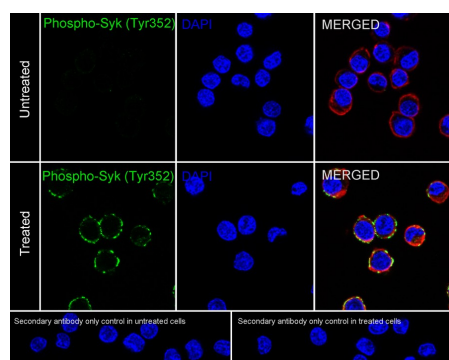
Predicted band size: 72 kDa

Observed band size: 72 kDa

Exposure time: 30 seconds; ECL: K1801;  
4-20% SDS-PAGE gel.

Proteins were transferred to a PVDF membrane and blocked with 5% NFDM/TBST for 1 hour at room temperature. The primary antibody (HA751422) at 1/5,000 dilution and pan Syk antibody at 1/1,000 dilution were used in 5% NFDM/TBST at 4 $^{\circ}$ C overnight. Goat Anti-Rabbit IgG - HRP Secondary Antibody (HA1001) at 1/50,000 dilution was used for 1 hour at room temperature.

**Fig2:** Immunocytochemistry analysis of Ramos cells untreated / serum starved for 16 hours add 12 $\mu$ g/mL human IgM (diluted in serum free medium) for 2 minutes labeling Phospho-Syk (Y352) with Rabbit anti-Phospho-Syk (Y352) antibody (HA751422) at 1/1,000 dilution.



Cells were fixed in 4% paraformaldehyde for 15 minutes at room temperature, permeabilized with 0.1% Triton X-100 in PBS for 15 minutes at room temperature, then blocked with 1% BSA in 10% negative goat serum for 1 hour at room temperature. Cells were then incubated with Rabbit anti-Phospho-Syk (Y352) antibody (HA751422) at 1/1,000 dilution in 1% BSA in PBST overnight at 4 $^{\circ}$ C. Goat Anti-Rabbit IgG H&L (iFluor<sup>TM</sup> 488, HA1121) was used as the secondary antibody at 1/1,000 dilution. PBS instead of the primary antibody was used as the secondary antibody only control. Nuclear DNA was labelled in blue with DAPI.

Beta tubulin (HA601187, red) was stained at 1/100 dilution overnight at +4 $^{\circ}$ C. Goat Anti-Mouse IgG H&L (iFluor<sup>TM</sup> 594, HA1126) was used as the secondary antibody at 1/1,000 dilution.

Hangzhou Huaan Biotechnology Co., Ltd.

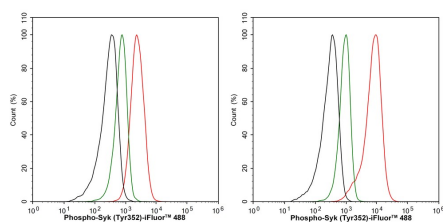
Orders:0086-571-88062880

Technical:0086-571-89986345

Service mail:support@huabio.cn

华安生物  
HUABIO  
www.huabio.cn

Applications:WB=Western blot IHC-P=Immunohistochemistry (paraffin) IF-Cell=Immunofluorescence (Cell) IF-Tissue=Immunofluorescence (Tissue) FC=Flow cytometry IP=Immunoprecipitation



**Fig3:** Flow cytometric analysis of Ramos cells untreated (left) / serum starved for 16 hours add 12µg/mL human IgM (diluted in serum free medium) for 2 minutes (right) labeling Phospho-Syk (Y352).

Cells were fixed and permeabilized. Then stained with the primary antibody (HA751422, 1/1,000) (red) compared with Rabbit IgG Isotype Control (green). After incubation of the primary antibody at +4°C for an hour, the cells were stained with a iFluor™ 488 conjugate-Goat anti-Rabbit IgG Secondary antibody (HA1121) at 1/1,000 dilution for 30 minutes at +4°C. Unlabelled sample was used as a control (cells without incubation with primary antibody; black).

**Note:** All products are “FOR RESEARCH USE ONLY AND ARE NOT INTENDED FOR DIAGNOSTIC OR THERAPEUTIC USE”.

### Background References

1. Leveille E et al. SYK and ZAP70 kinases in autoimmunity and lymphoid malignancies. Cell Signal. 2022 Jun
2. Cooper N et al. Recent advances in understanding spleen tyrosine kinase (SYK) in human biology and disease, with a focus on fostamatinib. Platelets. 2023 Dec

Hangzhou Huaan Biotechnology Co., Ltd.

Orders:0086-571-88062880

Technical:0086-571-89986345

Service mail:support@huabio.cn

华安生物  
HUABIO  
www.huabio.cn

Applications:WB=Western blot IHC-P=Immunohistochemistry (paraffin) IF-Cell=Immunofluorescence (Cell) IF-Tissue=Immunofluorescence (Tissue) FC=Flow cytometry IP=Immunoprecipitation