

# Anti-Inhibin alpha Antibody [PD01-29] - BSA and Azide free

## HA751016



<b>Product Type:</b>	Recombinant Rabbit monoclonal IgG, primary antibodies
<b>Species reactivity:</b>	Human, Mouse, Rat
<b>Applications:</b>	IHC-P, WB
<b>Molecular Wt:</b>	Predicted band size: 40 kDa
<b>Clone number:</b>	PD01-29

**Description:** Inhibin, alpha, also known as INHA, is a protein which in humans is encoded by the INHA gene. The inhibin alpha subunit joins either the beta A or beta B subunit to form a pituitary FSH secretion inhibitor. Inhibin has been shown to regulate gonadal stromal cell proliferation negatively and to have tumour-suppressor activity. In addition, serum levels of inhibin have been shown to reflect the size of granulosa-cell tumors and can therefore be used as a marker for primary as well as recurrent disease. However, in prostate cancer, expression of the inhibin alpha-subunit gene was suppressed and was not detectable in poorly differentiated tumor cells. Furthermore, because expression in gonadal and various extragonadal tissues may vary severalfold in a tissue-specific fashion, it is proposed that inhibin may be both a growth/differentiation factor and a hormone.

**Immunogen:** Synthetic peptide within Human Inhibin alpha aa 233-366.

**Positive control:** Mouse ovary tissue lysate, mouse testis tissue lysate, rat ovary tissue lysate, rat testis tissue lysate, human adrenal gland tissue, human ovary granular cell tumor tissue.

**Subcellular location:** Secreted.

**Database links:** SwissProt: P05111 Human | Q04997 Mouse | P17490 Rat

**Recommended Dilutions:**

<b>IHC-P</b>	1:500-1:1,000
<b>WB</b>	1:1,000

**Storage Buffer:** 1\*PBS (pH7.4).

**Storage Instruction:** Store at +4°C after thawing. Aliquot store at -20°C. Avoid repeated freeze / thaw cycles.

**Purity:** Protein A affinity purified.

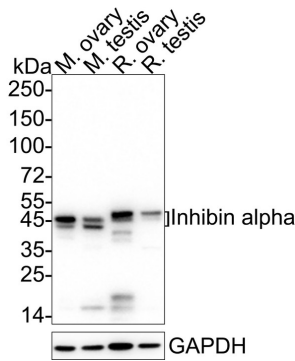
Hangzhou Huaan Biotechnology Co., Ltd.

Orders:0086-571-88062880

Technical:0086-571-89986345

Service mail:support@huabio.cn

 华安生物  
HUABIO  
www.huabio.cn



**Fig1:** Western blot analysis of Inhibin alpha on different lysates with Rabbit anti-Inhibin alpha antibody (HA751016) at 1/1,000 dilution.

Lane 1: Mouse ovary tissue lysate  
 Lane 2: Mouse testis tissue lysate  
 Lane 3: Rat ovary tissue lysate  
 Lane 4: Rat testis tissue lysate

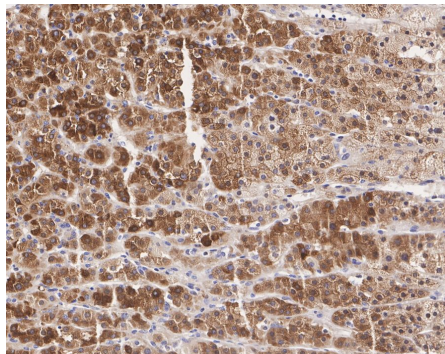
Lysates/proteins at 20 µg/Lane.

Predicted band size: 40 kDa  
 Observed band size: 40-45 kDa

Exposure time: 16 seconds; ECL: K1801;

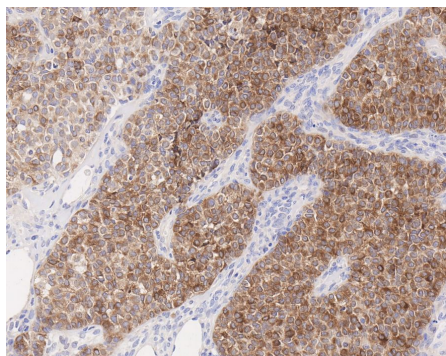
4-20% SDS-PAGE gel.

Proteins were transferred to a PVDF membrane and blocked with 5% NFDM/TBST for 1 hour at room temperature. The primary antibody (HA751016) at 1/1,000 dilution was used in 5% NFDM/TBST at 4°C overnight. Goat Anti-Rabbit IgG - HRP Secondary Antibody (HA1001) at 1/50,000 dilution was used for 1 hour at room temperature.



**Fig2:** Immunohistochemical analysis of paraffin-embedded human adrenal gland tissue with Rabbit anti-Inhibin alpha antibody (HA751016) at 1/500 dilution.

The section was pre-treated using heat mediated antigen retrieval with Tris-EDTA buffer (pH 9.0) for 20 minutes. The tissues were blocked in 1% BSA for 20 minutes at room temperature, washed with ddH<sub>2</sub>O and PBS, and then probed with the primary antibody (HA751016) at 1/500 dilution for 1 hour at room temperature. The detection was performed using an HRP conjugated compact polymer system. DAB was used as the chromogen. Tissues were counterstained with hematoxylin and mounted with DPX.



**Fig3:** Immunohistochemical analysis of paraffin-embedded human ovary granular cell tumor tissue with Rabbit anti-Inhibin alpha antibody (HA751016) at 1/500 dilution.

The section was pre-treated using heat mediated antigen retrieval with Tris-EDTA buffer (pH 9.0) for 20 minutes. The tissues were blocked in 1% BSA for 20 minutes at room temperature, washed with ddH<sub>2</sub>O and PBS, and then probed with the primary antibody (HA751016) at 1/500 dilution for 1 hour at room temperature. The detection was performed using an HRP conjugated compact polymer system. DAB was used as the chromogen. Tissues were counterstained with hematoxylin and mounted with DPX.

**Note:** All products are "FOR RESEARCH USE ONLY AND ARE NOT INTENDED FOR DIAGNOSTIC OR THERAPEUTIC USE".

### Background References

1. Mete O et al. Significance of Alpha-inhibin Expression in Pheochromocytomas and Paragangliomas. Am J Surg Pathol. 2021 Sep
2. Huang L et al. Elevated expression of inhibin alpha gene in sterile allotriploid crucian carp. Gen Comp Endocrinol. 2021 Oct

Hangzhou Huaan Biotechnology Co., Ltd.

Orders:0086-571-88062880

Technical:0086-571-89986345

Service mail:support@huabio.cn

华安生物  
HUABIO  
www.huabio.cn