

Anti-CLP Antibody [PSH01-73] - BSA and Azide free

HA750748



Product Type:	Recombinant Rabbit monoclonal IgG, primary antibodies
Species reactivity:	Human, Mouse, Rat
Applications:	IHC-P, IF-Tissue
Molecular Wt:	Predicted band size: 19 kDa
Clone number:	PSH01-73

Description: This gene encodes a member of an antimicrobial peptide family, characterized by a highly conserved N-terminal signal peptide containing a cathelin domain and a structurally variable cationic antimicrobial peptide, which is produced by extracellular proteolysis from the C-terminus. The protein plays an important role in innate immunity defense against viruses. In addition to its antibacterial, antifungal, and antiviral activities, the encoded protein functions in cell chemotaxis, immune mediator induction, and inflammatory response regulation. Antimicrobial protein that is an integral component of the innate immune system. Binds to bacterial lipopolysaccharides (LPS) . Acts via neutrophil N-formyl peptide receptors to enhance the release of CXCL2. Postsecretory processing generates multiple cathelicidin antimicrobial peptides with various lengths which act as a topical antimicrobial defense in sweat on skin. The unprocessed precursor form, cathelicidin antimicrobial peptide, inhibits the growth of Gram-negative E.coli and E.aerogenes with efficiencies comparable to that of the mature peptide LL-37 (in vitro).

Immunogen: Recombinant protein within human CLP aa 1-170 / 170.

Positive control: Human spleen tissue, mouse spleen tissue, rat spleen tissue.

Subcellular location: Secreted, Vesicle.

Database links: SwissProt: P49913 Human | P51437 mouse | P50463 rat

Recommended Dilutions:

IHC-P	1:1,000-1:5,000
IF-Tissue	1:200

Storage Buffer: 1*PBS (pH7.4).

Storage Instruction: Store at +4℃ after thawing. Aliquot store at -20℃. Avoid repeated freeze / thaw cycles.

Purity: Protein A affinity purified.

Hangzhou Huaan Biotechnology Co., Ltd.

Orders:0086-571-88062880

Technical:0086-571-89986345

Service mail:support@huabio.cn

 华安生物
HUABIO
www.huabio.cn

Images

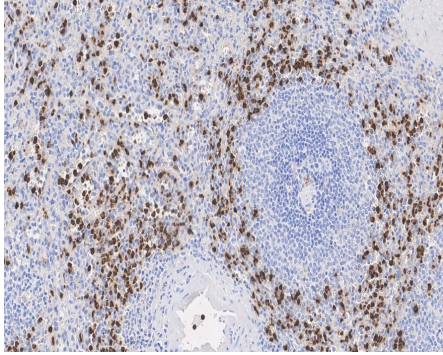


Fig1: Immunohistochemical analysis of paraffin-embedded human spleen tissue with Rabbit anti-CLP antibody (HA750748) at 1/5,000 dilution.

The section was pre-treated using heat mediated antigen retrieval with Tris-EDTA buffer (pH 9.0) for 20 minutes. The tissues were blocked in 1% BSA for 20 minutes at room temperature, washed with ddH₂O and PBS, and then probed with the primary antibody (HA750748) at 1/5,000 dilution for 1 hour at room temperature. The detection was performed using an HRP conjugated compact polymer system. DAB was used as the chromogen. Tissues were counterstained with hematoxylin and mounted with DPX.

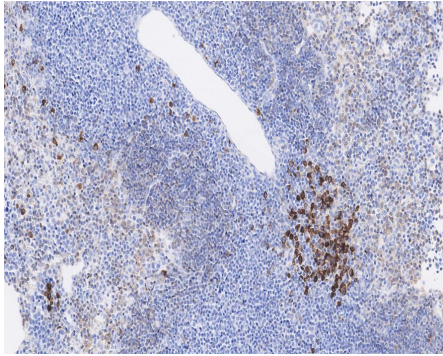


Fig2: Immunohistochemical analysis of paraffin-embedded mouse spleen tissue with Rabbit anti-CLP antibody (HA750748) at 1/1,000 dilution.

The section was pre-treated using heat mediated antigen retrieval with Tris-EDTA buffer (pH 9.0) for 20 minutes. The tissues were blocked in 1% BSA for 20 minutes at room temperature, washed with ddH₂O and PBS, and then probed with the primary antibody (HA750748) at 1/1,000 dilution for 1 hour at room temperature. The detection was performed using an HRP conjugated compact polymer system. DAB was used as the chromogen. Tissues were counterstained with hematoxylin and mounted with DPX.

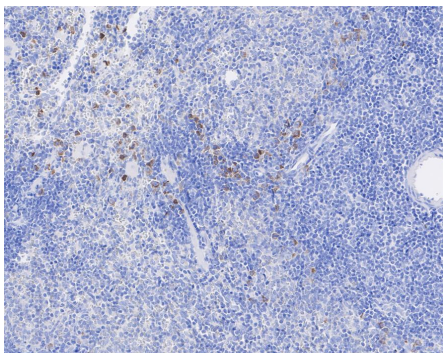


Fig3: Immunohistochemical analysis of paraffin-embedded rat spleen tissue with Rabbit anti-CLP antibody (HA750748) at 1/1,000 dilution.

The section was pre-treated using heat mediated antigen retrieval with Tris-EDTA buffer (pH 9.0) for 20 minutes. The tissues were blocked in 1% BSA for 20 minutes at room temperature, washed with ddH₂O and PBS, and then probed with the primary antibody (HA750748) at 1/1,000 dilution for 1 hour at room temperature. The detection was performed using an HRP conjugated compact polymer system. DAB was used as the chromogen. Tissues were counterstained with hematoxylin and mounted with DPX.

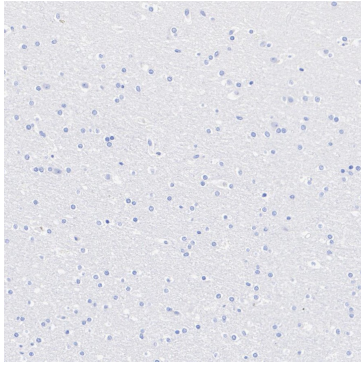


Fig4: Immunohistochemical analysis of paraffin-embedded human brain tissue (negative) with Rabbit anti-CLP antibody (HA750748) at 1/1,000 dilution.

The section was pre-treated using heat mediated antigen retrieval with Tris-EDTA buffer (pH 9.0) for 20 minutes. The tissues were blocked in 1% BSA for 20 minutes at room temperature, washed with ddH₂O and PBS, and then probed with the primary antibody (HA750748) at 1/1,000 dilution for 1 hour at room temperature. The detection was performed using an HRP conjugated compact polymer system. DAB was used as the chromogen. Tissues were counterstained with hematoxylin and mounted with DPX.

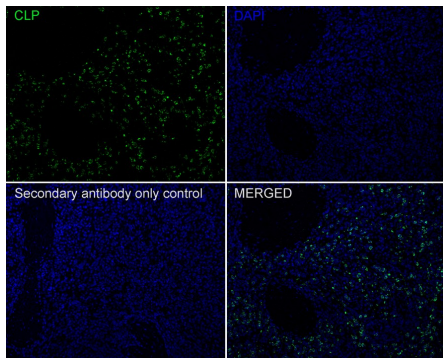


Fig5: Immunofluorescence analysis of paraffin-embedded human spleen tissue labeling CLP with Rabbit anti-CLP antibody (HA750748) at 1/200 dilution.

The section was pre-treated using heat mediated antigen retrieval with Tris-EDTA buffer (pH 9.0) for 20 minutes. The tissues were blocked in 10% negative goat serum for 1 hour at room temperature, washed with PBS, and then probed with the primary antibody (HA750748, green) at 1/200 dilution overnight at 4 °C, washed with PBS. Goat Anti-Rabbit IgG H&L (iFluor™ 488, HA1121) was used as the secondary antibody at 1/1,000 dilution. Nuclei were counterstained with DAPI (blue).

Note: All products are "FOR RESEARCH USE ONLY AND ARE NOT INTENDED FOR DIAGNOSTIC OR THERAPEUTIC USE".

Background References

1. Kress W, Maglica Z, Weber-Ban E. Clp chaperone-proteases: structure and function. *Res Microbiol.* 2009 Nov;160(9):618-28. doi: 10.1016/j.resmic.2009.08.006. Epub 2009 Sep 2. PMID: 19732826.

Hangzhou Huaan Biotechnology Co., Ltd.

Orders:0086-571-88062880

Technical:0086-571-89986345

Service mail:support@huabio.cn



 华安生物

 HUABIO

 www.huabio.cn