

# Anti-RbBP5 Antibody [PSH0-15] - BSA and Azide free

## HA750585



<b>Product Type:</b>	Recombinant Rabbit monoclonal IgG, primary antibodies
<b>Species reactivity:</b>	Human, Mouse, Rat
<b>Applications:</b>	WB
<b>Molecular Wt:</b>	Predicted band size: 59 kDa
<b>Clone number:</b>	PSH0-15

**Description:** Retinoblastoma-binding protein 5 is a protein that in humans is encoded by the RBBP5 gene. The protein encoded by this gene is a ubiquitously expressed nuclear protein and belongs to a highly conserved subfamily of WD-repeat proteins. It is found among several proteins that bind directly to retinoblastoma protein, which regulates cell proliferation. The encoded protein interacts preferentially with the underphosphorylated retinoblastoma protein via the E1A-binding pocket B.

**Immunogen:** Synthetic peptide within human RbBP5 aa 431-480 / 538.

**Positive control:** SW480 cell lysate, A431 cell lysate, C2C12 cell lysate, 293 cell lysate, MCF-7 cell lysate, NIH/3T3 cell lysate, K562 cell lysate, N2A cell lysate, PC-12 cell lysate, RAW264.7 cell lysate.

**Subcellular location:** Nucleus.

**Database links:** SwissProt: Q15291 Human | Q8BX09 Mouse  
Entrez Gene: 304794 Rat

**Recommended Dilutions:**

**WB** 1:1,000

**Storage Buffer:** 1\*PBS (pH7.4).

**Storage Instruction:** Store at +4°C after thawing. Aliquot store at -20°C. Avoid repeated freeze / thaw cycles.

**Purity:** Protein A affinity purified.

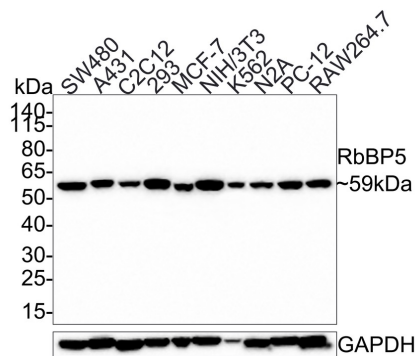
Hangzhou Huaan Biotechnology Co., Ltd.

Orders:0086-571-88062880

Technical:0086-571-89986345

Service mail:support@huabio.cn

华安生物  
HUABIO  
www.huabio.cn



**Fig1:** Western blot analysis of RbBP5 on different lysates with Rabbit anti-RbBP5 antibody (HA750585) at 1/1,000 dilution.

Lane 1: SW480 cell lysate  
 Lane 2: A431 cell lysate  
 Lane 3: C2C12 cell lysate  
 Lane 4: 293 cell lysate  
 Lane 5: MCF-7 cell lysate  
 Lane 6: NIH/3T3 cell lysate  
 Lane 7: K562 cell lysate  
 Lane 8: N2A cell lysate  
 Lane 9: PC-12 cell lysate  
 Lane 10: RAW264.7 cell lysate

Lysates/proteins at 25  $\mu$ g/Lane.

Predicted band size: 59 kDa

Observed band size: 59 kDa

Exposure time: 3 minutes;

4-20% SDS-PAGE gel.

Proteins were transferred to a PVDF membrane and blocked with 5% NFD/MTBST for 1 hour at room temperature. The primary antibody (HA750585) at 1/1,000 dilution was used in 5% NFD/MTBST at room temperature for 2 hours. Goat Anti-Rabbit IgG - HRP Secondary Antibody (HA1001) at 1:300,000 dilution was used for 1 hour at room temperature.

**Fig2:** Western blot analysis of RbBP5 on different lysates with Rabbit anti-RbBP5 antibody (HA750585) at 1/1,000 dilution.

Lane 1: NIH-3T3-si NT cell lysate

Lane 2: NIH-3T3-si RbBP5 cell lysate

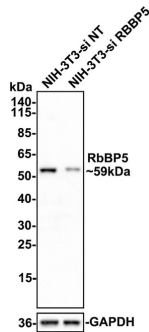
Lysates/proteins at 10 µg/Lane.

Predicted band size: 59 kDa

Observed band size: 59 kDa

Exposure time: 4 minutes;

4-20% SDS-PAGE gel.



HA721273 was shown to specifically react with RbBP5 in NIH-3T3-si NT cells. Weakened band was observed when NIH-3T3-si RbBP5 sample was tested. NIH-3T3-si NT and NIH-3T3-si RbBP5 samples were subjected to SDS-PAGE. Proteins were transferred to a PVDF membrane and blocked with 5% NFD in TBST for 1 hour at room temperature. The primary antibody (HA721273, 1/1,000) and Loading control antibody (Rabbit anti-GAPDH, ET1601-4, 1/10,000) were used in 5% BSA at room temperature for 2 hours. Goat Anti-rabbit IgG-HRP Secondary Antibody (HA1001) at 1:300,000 dilution was used for 1 hour at room temperature.

**Note:** All products are "FOR RESEARCH USE ONLY AND ARE NOT INTENDED FOR DIAGNOSTIC OR THERAPEUTIC USE".

## Background References

1. Xie H et al. Long non coding RNA AC245100.4 promotes prostate cancer tumorigenesis via the microRNA 145 5p/RBBP5 axis. *Oncol Rep.* 2021 Feb
2. Ali A et al. Diverse roles of WDR5-RbBP5-ASH2L-DPY30 (WRAD) complex in the functions of the SET1 histone methyltransferase family. *J Biosci.* 2017 Mar

Hangzhou Huan Biotechnology Co., Ltd.

Orders:0086-571-88062880

Technical:0086-571-89986345

Service mail:support@huabio.cn

华安生物  
HUABIO  
www.huabio.cn