

Anti-NSE Antibody [SC06-28] - BSA and Azide free

HA750239



Product Type:	Recombinant Rabbit monoclonal IgG, primary antibodies
Species reactivity:	Human, Mouse, Rat, Zebrafish
Applications:	WB, IF-Cell, IHC-P
Molecular Wt:	Predicted band size: 47 kDa
Clone number:	SC06-28

Description: Gamma-enolase, also known as enolase 2 (ENO2) or neuron specific enolase (NSE), is an enzyme that in humans is encoded by the ENO2 gene. Gamma-enolase is a phosphopyruvate hydratase. Gamma-enolase is one of the three enolase isoenzymes found in mammals. This isoenzyme, a homodimer, is found in mature neurons and cells of neuronal origin. A switch from alpha enolase to gamma enolase occurs in neural tissue during development in rats and primates.

Immunogen: Synthetic peptide within human NSE aa 30-70.

Positive control: HepG2 cell lysate, HeLa cell lysate, HEK-293 cell lysate, mouse brain tissue lysate, PC-12 cell lysate, SH-SY5Y cell lysate, hybrid fish (crucian-carp) brain tissue lysate, human breast cancer tissue, SH-SY5Y, 293, rat brain tissue, mouse brain tissue.

Subcellular location: Cytoplasm, Cell membrane.

Database links: SwissProt: P09104 Human | P17183 Mouse | P07323 Rat

Recommended Dilutions:

WB	1:1,000-1:5,000
IF-Cell	1:50-1:100
IHC-P	1:50-1:200

Storage Buffer: PBS (pH7.4).

Storage Instruction: Store at +4℃ after thawing. Aliquot store at -20℃ or -80℃. Avoid repeated freeze / thaw cycles.

Purity: Protein A affinity purified.

Hangzhou Huaan Biotechnology Co., Ltd.

Orders:0086-571-88062880

Technical:0086-571-89986345

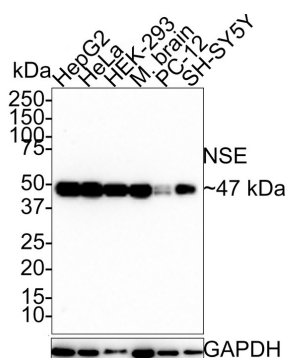
Service mail:support@huabio.cn

华安生物
HUABIO
www.huabio.cn

Applications:WB=Western blot IHC-P=Immunohistochemistry (paraffin) IF-Cell=Immunofluorescence (Cell) IF-Tissue=Immunofluorescence (Tissue) FC=Flow cytometry IP=Immunoprecipitation

Images

Fig1: Western blot analysis of NSE on different lysates with Rabbit anti-NSE antibody (HA750239) at 1/1,000 dilution.



Lane 1: HepG2 cell lysate (10 µg/Lane)
 Lane 2: HeLa cell lysate (10 µg/Lane)
 Lane 3: HEK-293 cell lysate (10 µg/Lane)
 Lane 4: Mouse brain tissue lysate (20 µg/Lane)
 Lane 5: PC-12 cell lysate (10 µg/Lane)
 Lane 6: SH-SY5Y cell lysate (10 µg/Lane)

Predicted band size: 47 kDa

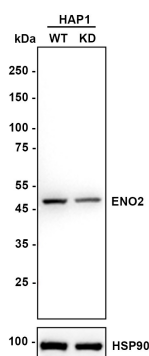
Observed band size: 47 kDa

Exposure time: 1 minutes;

4-20% SDS-PAGE gel.

Proteins were transferred to a PVDF membrane and blocked with 5% NFDM/TBST for 1 hour at room temperature. The primary antibody (HA750239) at 1/1,000 dilution was used in 5% NFDM/TBST at room temperature for 2 hours. Goat Anti-Rabbit IgG - HRP Secondary Antibody (HA1001) at 1:100,000 dilution was used for 1 hour at room temperature.

Fig2: Western blot analysis of NSE on different lysates with Rabbit anti-NSE antibody (HA750239) at 1/5,000 dilution.



Lane 1: HAP1-parental cell lysate
 Lane 2: HAP1-NSE KD cell lysate

Lysates/proteins at 10 µg/Lane.

Predicted band size: 47 kDa

Observed band size: 47 kDa

Exposure time: 6 seconds; ECL: K1801;

4-20% SDS-PAGE gel.

Proteins were transferred to a PVDF membrane and blocked with 5% NFDM/TBST for 1 hour at room temperature. The primary antibody (HA750239) at 1/5,000 dilution was used in K1803 at 4°C overnight. Goat Anti-Rabbit IgG - HRP Secondary Antibody (HA1001) at 1/50,000 dilution was used for 1 hour at room temperature.

Hangzhou Huaan Biotechnology Co., Ltd.

Orders:0086-571-88062880

Technical:0086-571-89986345

Service mail:support@huabio.cn

华安生物
HUABIO
www.huabio.cn

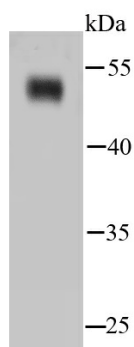


Fig3: Western blot analysis of NSE on hybrid fish (crucian-carp) brain tissue lysates. Proteins were transferred to a PVDF membrane and blocked with 5% BSA in PBS for 1 hour at room temperature. The primary antibody (HA750239, 1/500) was used in 5% BSA at room temperature for 2 hours. Goat Anti-Rabbit IgG - HRP Secondary Antibody (HA1001) at 1:5,000 dilution was used for 1 hour at room temperature.

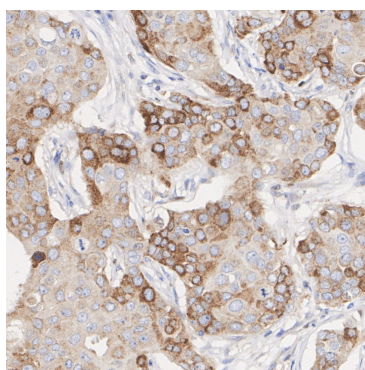


Fig4: Immunohistochemical analysis of paraffin-embedded human breast cancer tissue with Rabbit anti-NSE antibody (HA750239) at 1/200 dilution.

The section was pre-treated using heat mediated antigen retrieval with Tris-EDTA buffer (pH 9.0) for 20 minutes. The tissues were blocked in 1% BSA for 20 minutes at room temperature, washed with ddH₂O and PBS, and then probed with the primary antibody (HA750239) at 1/200 dilution for 1 hour at room temperature. The detection was performed using an HRP conjugated compact polymer system. DAB was used as the chromogen. Tissues were counterstained with hematoxylin and mounted with DPX.

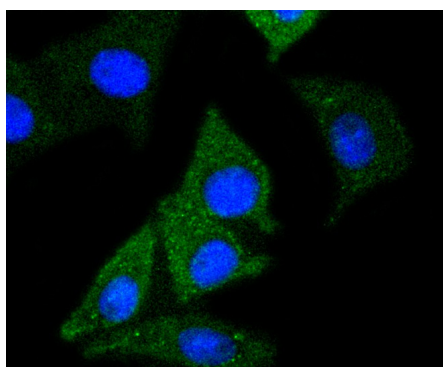


Fig5: ICC staining of NSE in SH-SY5Y cells (green). Formalin fixed cells were permeabilized with 0.1% Triton X-100 in TBS for 10 minutes at room temperature and blocked with 1% Blocker BSA for 15 minutes at room temperature. Cells were probed with the primary antibody (HA750239, 1/50) for 1 hour at room temperature, washed with PBS. Alexa Fluor®488 Goat anti-Rabbit IgG was used as the secondary antibody at 1/1,000 dilution. The nuclear counter stain is DAPI (blue).

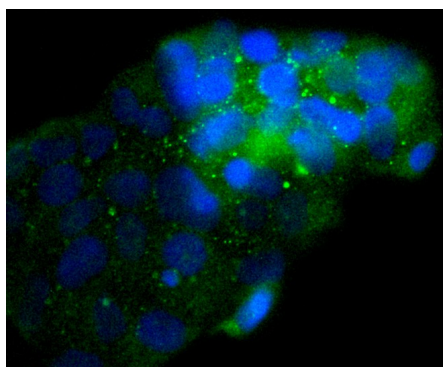


Fig6: ICC staining of NSE in 293 cells (green). Formalin fixed cells were permeabilized with 0.1% Triton X-100 in TBS for 10 minutes at room temperature and blocked with 1% Blocker BSA for 15 minutes at room temperature. Cells were probed with the primary antibody (HA750239, 1/50) for 1 hour at room temperature, washed with PBS. Alexa Fluor®488 Goat anti-Rabbit IgG was used as the secondary antibody at 1/1,000 dilution. The nuclear counter stain is DAPI (blue).

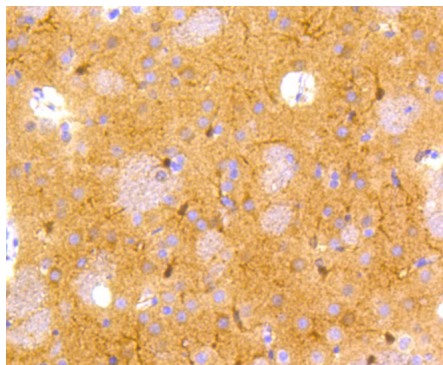


Fig7: Immunohistochemical analysis of paraffin-embedded rat brain tissue using anti-NSE antibody. The section was pre-treated using heat mediated antigen retrieval with Tris-EDTA buffer (pH 8.0-8.4) for 20 minutes. The tissues were blocked in 5% BSA for 30 minutes at room temperature, washed with ddH₂O and PBS, and then probed with the primary antibody (HA750239, 1/50) for 30 minutes at room temperature. The detection was performed using an HRP conjugated compact polymer system. DAB was used as the chromogen. Tissues were counterstained with hematoxylin and mounted with DPX.

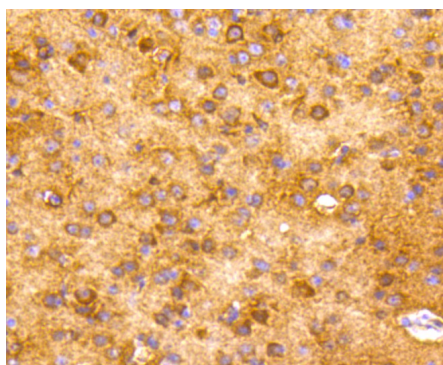


Fig8: Immunohistochemical analysis of paraffin-embedded mouse brain tissue using anti-NSE antibody. The section was pre-treated using heat mediated antigen retrieval with Tris-EDTA buffer (pH 8.0-8.4) for 20 minutes. The tissues were blocked in 5% BSA for 30 minutes at room temperature, washed with ddH₂O and PBS, and then probed with the primary antibody (HA750239, 1/50) for 30 minutes at room temperature. The detection was performed using an HRP conjugated compact polymer system. DAB was used as the chromogen. Tissues were counterstained with hematoxylin and mounted with DPX.

Note: All products are "FOR RESEARCH USE ONLY AND ARE NOT INTENDED FOR DIAGNOSTIC OR THERAPEUTIC USE".

Background References

1. Chang BS et al. Collagen complexes increase the efficiency of iPS cells generated using fibroblasts from adult mice. J Reprod Dev 61:145-53 (2015).
2. Sun Y et al. The expression and significance of neuronal iconic proteins in podocytes. PLoS One 9:e93999 (2014).

Hangzhou Huaan Biotechnology Co., Ltd.

Orders:0086-571-88062880

Technical:0086-571-89986345

Service mail:support@huabio.cn

华安生物
HUABIO
www.huabio.cn

Applications:WB=Western blot IHC-P=Immunohistochemistry (paraffin) IF-Cell=Immunofluorescence (Cell) IF-Tissue=Immunofluorescence (Tissue) FC=Flow cytometry IP=Immunoprecipitation