

Anti-Human Complement factor H Antibody [PSH22-21] - BSA and Azide free (Detector)

HA724282



Product Type:	Recombinant Rabbit monoclonal IgG, primary antibodies
Species reactivity:	Human
Applications:	ELISA(Det)
Clone number:	PSH22-21

Description: The Factor H gene family is a multidomain, multifunctional protein family whose individual members are defined by conserved structural elements, which display diverse yet often overlapping functions. These proteins share a common structural motif, the short consensus repeat (SCR), which is structurally conserved among related genes and between phylogenetically divergent species. The human complement Factor H (FH, CFH, HUS, b-1H) gene encodes a 1213 amino acid serum glycoprotein which is arranged into 20 SCRs, each approximately 60 amino acids long, and an 18-residue leader sequence. Factor H controls the function of the alternative complement pathway and acts as a cofactor with Factor I (C3b inactivator). In addition, Factor H has functional activity outside of the complement system, where it can bind to the cellular integrin receptor (CD11b/CD18), interact with cell surface glycosaminoglycans and associate with the surface of certain pathogenic microorganisms. Deficiencies in Factor H is a common characteristic of acute renal disease.

Immunogen: Recombinant protein within Human Complement factor H aa 866-1231 (HA211200).

Positive control: Recombinant Human Complement factor H protein (HA211200).

Subcellular location: Secreted.

Database links: SwissProt: P08603 Human

Recommended Dilutions:

ELISA(Det) Use at an assay dependent concentration. Can be paired for Sandwich ELISA with Rabbit monoclonal [PSH22-20] to Human Complement factor H antibody (Capture) (HA724281) and Recombinant Human Complement factor H protein (HA211200) as the standard. The reference range value is 15.6-4,000 pg/mL.

Storage Buffer: 1*PBS (pH7.4).

Storage Instruction: Store at +4°C after thawing. Aliquot store at -20°C. Avoid repeated freeze / thaw cycles.

Purity: Protein A affinity purified.

Hangzhou Huaan Biotechnology Co., Ltd.

Orders:0086-571-88062880

Technical:0086-571-89986345

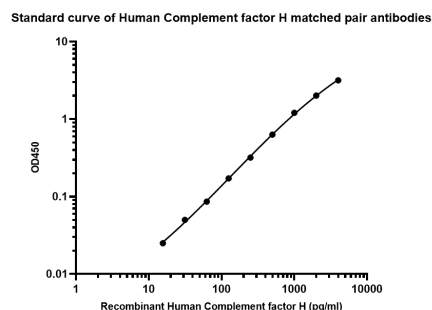
Service mail:support@huabio.cn

 华安生物
HUABIO
www.huabio.cn

Images

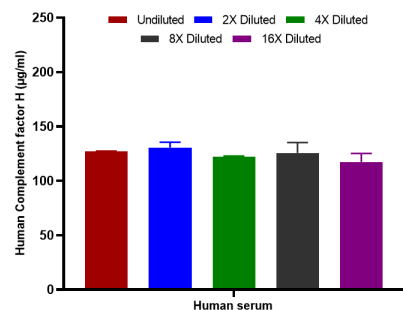
Fig1: Sandwich ELISA analysis of Human Complement factor H matched pair antibodies

Capture: HA724281, Human Complement factor H Rabbit mAb [PSH22-20]
 Detector: HA724282, Human Complement factor H Rabbit mAb [PSH22-21]



Elisa assay was performed by coating wells of a 96-well plate with 100 µl per well of capture antibody (HA724281) diluted in carbonate/bicarbonate buffer, at a concentration of 2 µg/mL overnight at 4°C. Wells of the plate were washed, blocked with 150 µl 0.2% tween-20 1% BSA blocking buffer, and incubated with serial diluted Recombinant Human Complement factor H protein (HA211200) starting from 4,000 pg/ml to 0 pg/ml and detect antibody (HA724282, Biotin, 0.2 µg/ml) for 1 hour at 30°C with shaking. Then the plate was washed and incubated with 100 µl per well of SA-HRP for 0.5 hour at 30°C with shaking. Detection was performed using an Ultra TMB Substrate for 10 minutes at room temperature in the dark. The reaction was stopped with sulfuric acid and absorbances were read on a spectrophotometer at 450 nm.

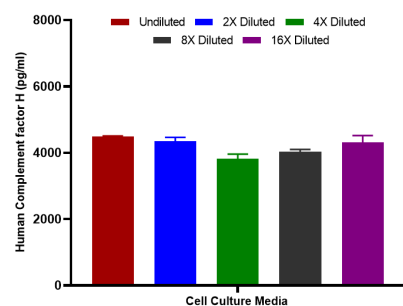
Fig2: Interpolated concentrations of native Complement factor H in human serum samples.



Capture: HA724281, Human Complement factor H Rabbit mAb [PSH22-20]
 Detector: HA724282, Human Complement factor H Rabbit mAb [PSH22-21]

The concentrations of Complement factor H were measured in duplicates, interpolated from the Complement factor H standard curve and corrected for sample dilution. Undiluted samples are human serum 0.005%. The interpolated dilution factor corrected values are plotted (mean +/- SD, n=2). The mean Complement factor H concentration was determined to be 124.6 µg/ml in human serum.

Fig3: Interpolated concentrations of spiked Complement factor H in human cell culture media samples.



Capture: HA724281, Human Complement factor H Rabbit mAb [PSH22-20]
 Detector: HA724282, Human Complement factor H Rabbit mAb [PSH22-21]

The concentrations of Complement factor H were measured in duplicates, interpolated from the Complement factor H standard

Note: All products are "FOR RESEARCH USE ONLY AND ARE NOT INTENDED FOR DIAGNOSTIC OR THERAPEUTIC USE".

Background References

1. Saxena R et al. Complement factor H: a novel innate immune checkpoint in cancer immunotherapy. Front Cell Dev Biol. 2024 Feb
2. Moore SR et al. Hijacking Factor H for Complement Immune Evasion. Front Immunol. 2021 Feb

Hangzhou Huaan Biotechnology Co., Ltd.

Orders:0086-571-88062880

Technical:0086-571-89986345

Service mail:support@huabio.cn

 华安生物
HUAABIO
www.huabio.cn