

HRP Conjugated Anti-beta Tubulin Antibody [SR25-04] - Loading control

HA724236H



Product Type:	Recombinant Rabbit monoclonal IgG, primary antibodies
Species reactivity:	Human, Mouse, Rat, Monkey
Applications:	WB
Molecular Wt:	Predicted band size: 50 kDa
Clone number:	SR25-04

Description: Tubulin is one of several members of a small family of globular proteins. The most common members of the tubulin family are α -tubulin and β -tubulin. The beta-tubulin (relative molecular weight about 50 kDa) is counterpart of alpha-tubulin in tubulin heterodimer, it is coded by multiple tubulin genes and it is also posttranslationally modified. Heterogeneity of subunit is concentrated in C-terminal structural domain. Beta-Tubulin may have bound GTP or GDP. Under certain conditions β -tubulin can hydrolyze its bound GTP to GDP plus Pi, release the Pi, and exchange the GDP for GTP.

Conjugate: HRP-conjugated

Immunogen: Synthetic peptide within Human beta Tubulin aa 308-357 / 444.

Positive control: HeLa cell lysate, HEK-293 cell lysate, NIH/3T3 cell lysate, RAW264.7 cell lysate, C6 cell lysate, PC-12 cell lysate, COS-1 cell lysate.

Subcellular location: Cytoplasm

Database links: SwissProt: P07437 Human | P99024 Mouse | P69897 Rat

Recommended Dilutions:

WB 1:2,000-1:20,000

Storage Buffer: PBS (pH7.4), 0.1% BSA, 40% Glycerol.

Storage Instruction: Shipped at 4°C. Store at +4°C short term (1-2 weeks). It is recommended to aliquot into single-use upon delivery. Store at -20°C long term.

Purity: Protein A affinity purified.

Hangzhou Huaan Biotechnology Co., Ltd.

Orders: 0086-571-88062880

Technical: 0086-571-89986345

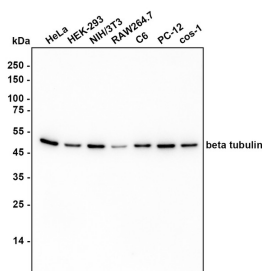
Service mail: support@huabio.cn

 华安生物
HUABIO
www.huabio.cn

Applications: WB=Western blot IHC-P=Immunohistochemistry (paraffin) IF-Cell=Immunofluorescence (Cell) IF-Tissue=Immunofluorescence (Tissue) FC=Flow cytometry IP=Immunoprecipitation

Images

Fig1: Western blot analysis of beta Tubulin on different lysates with Mouse anti-beta Tubulin antibody (HA724236H) at 1/2,000 dilution.



Copyright © HUABIO Limited

Lane 1: HeLa cell lysate
 Lane 2: HEK-293 cell lysate
 Lane 3: NIH/3T3 cell lysate
 Lane 4: RAW264.7 cell lysate
 Lane 5: C6 cell lysate
 Lane 6: PC-12 cell lysate
 Lane 7: COS-1 cell lysate

Lysates/proteins at 10 µg/Lane.

Predicted band size: 50 kDa

Observed band size: 50 kDa

Exposure time: 54 seconds; ECL: K1801;

4-20% SDS-PAGE gel.

Proteins were transferred to a PVDF membrane and blocked with 5% NFDM/TBST for 1 hour at room temperature. The primary antibody (HA724236H, HRP) at 1/2,000 dilution was used in primary antibody dilution (K1803) at 4°C overnight.

Note: All products are "FOR RESEARCH USE ONLY AND ARE NOT INTENDED FOR DIAGNOSTIC OR THERAPEUTIC USE".

Background References

1. "Tumoral and tissue-specific expression of the major human beta-tubulin isotypes." Leandro-Garcia L.J., Leskela S., Landa I., Montero-Conde C., Lopez-Jimenez E., Leton R., .Cytoskeleton 67:214-223(2010).
2. "Five mouse tubulin isotypes and their regulated expression during development." Lewis S.A., Lee M.G.-S., Cowan N.J.J. Cell Biol. 101:852-861(1985).

Hangzhou Huaan Biotechnology Co., Ltd.

Orders: 0086-571-88062880

Technical: 0086-571-89986345

Service mail: support@huabio.cn

华安生物
 HUABIO
 www.huabio.cn

Applications: WB=Western blot IHC-P=Immunohistochemistry (paraffin) IF-Cell=Immunofluorescence (Cell) IF-Tissue=Immunofluorescence (Tissue) FC=Flow cytometry IP=Immunoprecipitation