

## HRP Conjugated Anti-beta Actin Antibody [PSH03-63] - Loading control

# HA724235H



<b>Product Type:</b>	Recombinant Rabbit monoclonal IgG, primary antibodies
<b>Species reactivity:</b>	Human, Mouse, Rat, Pig, Monkey
<b>Applications:</b>	WB
<b>Molecular Wt:</b>	Predicted band size: 42 kDa
<b>Clone number:</b>	PSH03-63

**Description:** Actins are highly conserved proteins involved in cell motility, structure and integrity. Actin has been found to be expressed in at least six isomeric forms. It is expressed in heart and skeletal striated muscle tissue, and in certain smooth muscle tissues, regulating contractile potentials for these cells. It is also expressed in the cytoplasm of non-muscle cells, functioning to control cell structure and motility. Beta actin is usually used as a loading control, for among others, the integrity of cells, protein degradation, in Western Blotting.

**Conjugate:** HRP-conjugated

**Immunogen:** Synthetic peptide within N-terminal residues of  $\beta$ -Actin.

**Positive control:** Mouse brain tissue lysate, Mouse liver tissue lysate, Rat brain tissue lysate, Rat liver tissue lysate, Pig brain tissue lysate, HeLa cell lysate, HEK-293 cell lysate, NIH/3T3 cell lysate, RAW264.7 cell lysate, C6 cell lysate, PC-12 cell lysate, COS-1 cell lysate.

**Subcellular location:** Cytoskeleton.

**Database links:** SwissProt: P60709 Human | P60710 Mouse | P60711 Rat

**Recommended Dilutions:**

**WB** 1:2,000-1:5,000

**Storage Buffer:** PBS (pH7.4), 0.1% BSA, 40% Glycerol.

**Storage Instruction:** Shipped at 4°C. Store at +4°C short term (1-2 weeks). It is recommended to aliquot into single-use upon delivery. Store at -20°C long term.

**Purity:** Protein A affinity purified.

Hangzhou Huaan Biotechnology Co., Ltd.

Orders: 0086-571-88062880

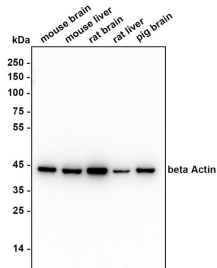
Technical: 0086-571-89986345

Service mail: support@huabio.cn

 华安生物  
HUABIO  
www.huabio.cn

Applications: WB=Western blot IHC-P=Immunohistochemistry (paraffin) IF-Cell=Immunofluorescence (Cell) IF-Tissue=Immunofluorescence (Tissue) FC=Flow cytometry IP=Immunoprecipitation

## Images



Copyright © HUABIO Limited

**Fig1:** Western blot analysis of beta Actin on different lysates with Rabbit anti-beta Actin antibody (HA724235H) at 1/2,000 dilution.

Lane 1: Mouse brain tissue lysate

Lane 2: Mouse liver tissue lysate

Lane 3: Rat brain tissue lysate

Lane 4: Rat liver tissue lysate

Lane 4: Pig brain tissue lysate

Lysates/proteins at 10 µg/Lane.

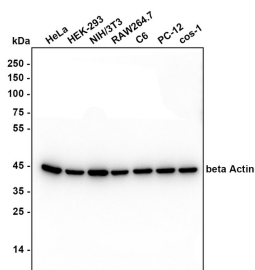
Predicted band size: 42 kDa

Observed band size: 42 kDa

Exposure time: 14 seconds; ECL: K1801;

4-20% SDS-PAGE gel.

Proteins were transferred to a PVDF membrane and blocked with 5% NFDM/TBST for 1 hour at room temperature. The primary antibody (HA724235H, HRP) at 1/2,000 dilution was used in primary antibody dilution (K1803) at 4°C overnight.



Copyright © HUABIO Limited

**Fig2:** Western blot analysis of beta Actin on different lysates with Mouse anti-beta Actin antibody (HA724235H) at 1/5,000 dilution.

Lane 1: HeLa cell lysate

Lane 2: HEK-293 cell lysate

Lane 3: NIH/3T3 cell lysate

Lane 4: RAW264.7 cell lysate

Lane 5: C6 cell lysate

Lane 6: PC-12 cell lysate

Lane 7: COS-1 cell lysate

Lysates/proteins at 10 µg/Lane.

Predicted band size: 42 kDa

Observed band size: 42 kDa

Exposure time: 10 seconds; ECL: K1801;

4-20% SDS-PAGE gel.

Proteins were transferred to a PVDF membrane and blocked with 5% NFDM/TBST for 1 hour at room temperature. The primary antibody (HA724235H, HRP) at 1/5,000 dilution was used in primary antibody dilution (K1803) at 4°C overnight.

Hangzhou Huaan Biotechnology Co., Ltd.

Orders:0086-571-88062880

Technical:0086-571-89986345

Service mail:support@huabio.cn

华安生物  
HUABIO  
www.huabio.cn

---

**Note:** All products are "FOR RESEARCH USE ONLY AND ARE NOT INTENDED FOR DIAGNOSTIC OR THERAPEUTIC USE".

---

### Background References

1. Ponte P., Ng S.Y., Engel J., Gunning P., Kedes L."Evolutionary conservation in the untranslated regions of actin mRNAs: DNA sequence of a human beta-actin cDNA." Nucleic Acids Res. 12:1687-1696(1984) Ohmori H., Toyama S., Toyama S."Direct proof that the primary site of action of cytochalasin on cell motility processes is actin."J. Cell Biol. 116:933-941(1992)

**Hangzhou Huaan Biotechnology Co., Ltd.**

Orders:0086-571-88062880

Technical:0086-571-89986345

Service mail:support@huabio.cn

 华安生物  
HUAABIO  
www.huabio.cn

Applications:WB=Western blot IHC-P=Immunohistochemistry (paraffin) IF-Cell=Immunofluorescence (Cell) IF-Tissue=Immunofluorescence (Tissue) FC=Flow cytometry IP=Immunoprecipitation