

Anti-TIM 3 Antibody [PSH16-50]

HA723854



Product Type:	Recombinant Rabbit monoclonal IgG, primary antibodies
Species reactivity:	Human, Mouse, Rat
Applications:	WB, IHC-P, IP
Molecular Wt:	Predicted band size: 33 kDa
Clone number:	PSH16-50

Description: Hepatitis A virus cellular receptor 2 (HAVCR2), also known as T-cell immunoglobulin and mucin-domain containing-3 (TIM-3), is a protein that in humans is encoded by the HAVCR2 (TIM-3) gene. HAVCR2 was first described in 2002 as a cell surface molecule expressed on IFN γ producing CD4⁺ Th1 and CD8⁺ Tc1 cells. Later, the expression was detected in Th17 cells, regulatory T-cells, and innate immune cells (dendritic cells, NK cells, monocytes, macrophages). HAVCR2 receptor is a regulator of the immune response.

Positive control: RPMI 8226 cell lysate, RAW264.7 cell lysates, human lung cancer tissue, mouse spleen tissue, rat spleen tissue.

Subcellular location: Membrane, Cell junction, Cell membrane.

Database links: SwissProt: Q8TDQ0 Human | Q8VIM0 Mouse | P0C0K5 Rat

Recommended Dilutions:

WB	1:2,000
IHC-P	1:200-1:1,000
IP	1-2 μ g/sample

Storage Buffer: 1*PBS (pH7.4), 0.1% BSA, 40% Glycerol, 0.2% Proclean 950.

Storage Instruction: Shipped at 4 $^{\circ}$ C. Store at +4 $^{\circ}$ C short term (1-2 weeks). It is recommended to aliquot into single-use upon delivery. Store at -20 $^{\circ}$ C long term.

Purity: Protein A affinity purified.

Hangzhou Huaan Biotechnology Co., Ltd.

Orders:0086-571-88062880

Technical:0086-571-89986345

Service mail:support@huabio.cn

华安生物
HUABIO
www.huabio.cn

Images

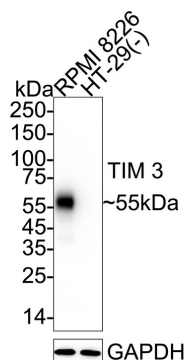


Fig1: Western blot analysis of TIM 3 on different lysates with Rabbit anti-TIM 3 antibody (HA723854) at 1/2,000 dilution.

Lane 1: RPMI 8226 cell lysate (20 μ g/Lane)

Lane 2: HT-29 cell lysate (negative) (20 μ g/Lane)

Predicted band size: 33 kDa

Observed band size: 55 kDa

Exposure time: 5 seconds; ECL: K1801;

4-20% SDS-PAGE gel.

Proteins were transferred to a PVDF membrane and blocked with 5% NFDN/TBST for 1 hour at room temperature. The primary antibody (HA723854) at 1/2,000 dilution was used in primary antibody dilution (K1803) at 4°C overnight. Goat Anti-Rabbit IgG - HRP Secondary Antibody (HA1001) at 1/50,000 dilution was used for 1 hour at room temperature.

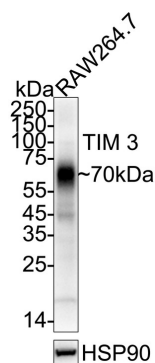


Fig2: Western blot analysis of TIM 3 on RAW264.7 cell lysates with Rabbit anti-TIM 3 antibody (HA723854) at 1/2,000 dilution.

Lysates/proteins at 20 μ g/Lane.

Predicted band size: 33 kDa

Observed band size: 70 kDa

Exposure time: 1 minute; ECL: K1802;

4-20% SDS-PAGE gel.

Proteins were transferred to a PVDF membrane and blocked with 5% NFDN/TBST for 1 hour at room temperature. The primary antibody (HA723854) at 1/2,000 dilution was used in 5% NFDN/TBST at 4°C overnight. Goat Anti-Rabbit IgG - HRP Secondary Antibody (HA1001) at 1/50,000 dilution was used for 1 hour at room temperature.

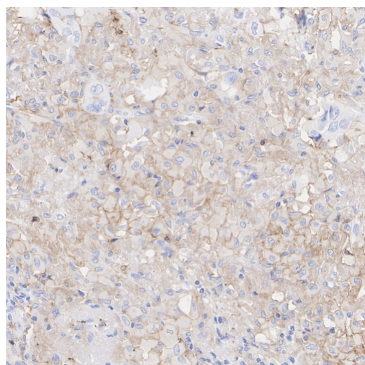


Fig3: Immunohistochemical analysis of paraffin-embedded human lung cancer tissue with Rabbit anti-TIM 3 antibody (HA723854) at 1/1,000 dilution.

The section was pre-treated using heat mediated antigen retrieval with Tris-EDTA buffer (pH 9.0) for 20 minutes. The tissues were blocked in 1% BSA for 20 minutes at room temperature, washed with ddH₂O and PBS, and then probed with the primary antibody (HA723854) at 1/1,000 dilution for 1 hour at room temperature. The detection was performed using an HRP conjugated compact polymer system. DAB was used as the chromogen. Tissues were counterstained with hematoxylin and mounted with DPX.

Hangzhou Huan Biotechnology Co., Ltd.

Orders:0086-571-88062880

Technical:0086-571-89986345

Service mail:support@huabio.cn

华安生物
HUABIO
www.huabio.cn

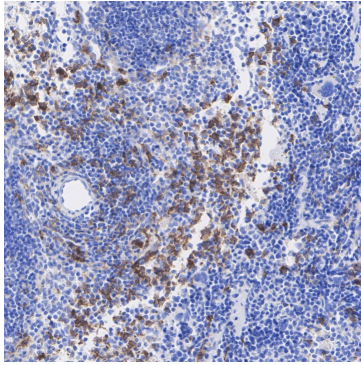


Fig4: Immunohistochemical analysis of paraffin-embedded mouse spleen tissue with Rabbit anti-TIM 3 antibody (HA723854) at 1/1,000 dilution.

The section was pre-treated using heat mediated antigen retrieval with Tris-EDTA buffer (pH 9.0) for 20 minutes. The tissues were blocked in 1% BSA for 20 minutes at room temperature, washed with ddH₂O and PBS, and then probed with the primary antibody (HA723854) at 1/1,000 dilution for 1 hour at room temperature. The detection was performed using an HRP conjugated compact polymer system. DAB was used as the chromogen. Tissues were counterstained with hematoxylin and mounted with DPX.

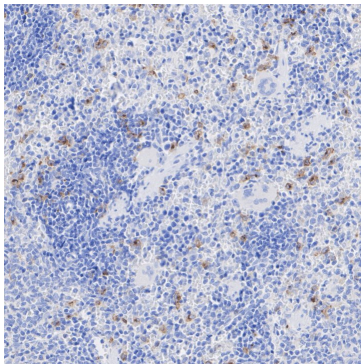


Fig5: Immunohistochemical analysis of paraffin-embedded rat spleen tissue with Rabbit anti-TIM 3 antibody (HA723854) at 1/200 dilution.

The section was pre-treated using heat mediated antigen retrieval with Tris-EDTA buffer (pH 9.0) for 20 minutes. The tissues were blocked in 1% BSA for 20 minutes at room temperature, washed with ddH₂O and PBS, and then probed with the primary antibody (HA723854) at 1/200 dilution for 1 hour at room temperature. The detection was performed using an HRP conjugated compact polymer system. DAB was used as the chromogen. Tissues were counterstained with hematoxylin and mounted with DPX.

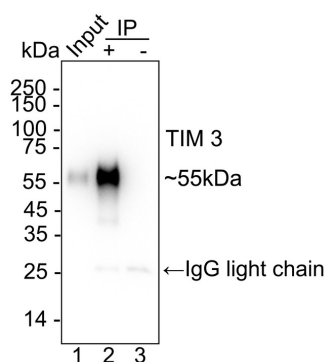


Fig6: TIM 3 was immunoprecipitated from 0.2 mg RPMI 8226 cell lysate with HA723854 at 2 μ g/10 μ l beads. Western blot was performed from the immunoprecipitate using HA723854 at 1/2,000 dilution. HRP Conjugated Anti-Rabbit IgG for IP Nano-secondary antibody at 1/5,000 dilution was used for 1 hour at room temperature.

Lane 1: RPMI 8226 cell lysate (input)

Lane 2: HA723854 IP in RPMI 8226 cell lysate

Lane 3: Rabbit IgG instead of HA723854 in RPMI 8226 cell lysate

Blocking/Dilution buffer: primary antibody dilution (K1803)

Exposure time: 3 seconds; ECL: K1801

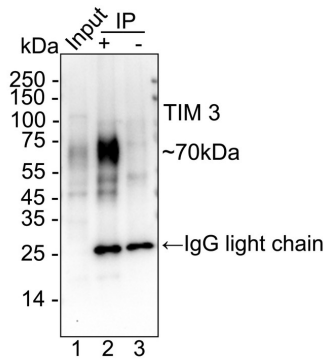


Fig7: TIM 3 was immunoprecipitated from 0.2 mg RAW264.7 cell lysate with HA723854 at 2 μ g/10 μ l beads. Western blot was performed from the immunoprecipitate using HA723854 at 1/2,000 dilution. HRP Conjugated Anti-Rabbit IgG for IP Nano-secondary antibody at 1/5,000 dilution was used for 1 hour at room temperature.

Lane 1: RAW264.7 cell lysate (input)

Lane 2: HA723854 IP in RAW264.7 cell lysate

Lane 3: Rabbit IgG instead of HA723854 in RAW264.7 cell lysate

Blocking/Dilution buffer: primary antibody dilution (K1803)

Exposure time: 46 seconds; ECL: K1802

Note: All products are "FOR RESEARCH USE ONLY AND ARE NOT INTENDED FOR DIAGNOSTIC OR THERAPEUTIC USE".

Background References

1. Kandel S et al. The TIM3/GaI9 signaling pathway: An emerging target for cancer immunotherapy. *Cancer Lett.* 2021 Jul
2. Palacios LM et al. TIM3 Expression in Anaplastic-Thyroid-Cancer-Infiltrating Macrophages: An Emerging Immunotherapeutic Target. *Biology (Basel).* 2022 Nov

Hangzhou Huaan Biotechnology Co., Ltd.

Orders:0086-571-88062880

Technical:0086-571-89986345

Service mail:support@huabio.cn

华安生物
HUABIO
www.huabio.cn