

Anti-Phospho-Beclin 1 (S30) Antibody [PSH16-40]

HA723840



Product Type:	Recombinant Rabbit monoclonal IgG, primary antibodies
Species reactivity:	Human, Mouse, Rat
Applications:	WB
Molecular Wt:	Predicted band size: 52 kDa
Clone number:	PSH16-40

Description: Beclin-1 is a protein that in humans is encoded by the BECN1 gene. Beclin-1 is a mammalian ortholog of the yeast autophagy-related gene 6 (Atg6) and BEC-1 in the *C. elegans* nematode. This protein interacts with either BCL-2 or PI3k class III, playing a critical role in the regulation of both autophagy and cell death. Beclin-1 plays an important role in tumorigenesis, and neurodegeneration, being implicated in the autophagic programmed cell death. Ovarian cancer with upregulated autophagy has a less aggressive behavior and is more responsive to chemotherapy. Schizophrenia is associated with low levels of Beclin-1 in the hippocampus of those affected, which causes diminished autophagy which in turn results in increased neuronal cell death. This protein is thought to play a role in multiple cellular processes, including tumorigenesis, neurodegeneration and apoptosis. Alternative splicing results in multiple transcript variants.

Immunogen: Synthetic phosphopeptide corresponding to residues surrounding Ser30 of human Beclin 1.

Positive control: PC-12 cell lysate, PC-12 treated with 250nM Torin 1 for 2 hours cell lysate.

Subcellular location: Cytoplasm, Golgi apparatus, trans-Golgi network membrane, Endosome membrane, Endoplasmic reticulum membrane, Mitochondrion membrane, Endosome, Cytoplasmic vesicle, autophagosome.

Database links: SwissProt: Q14457 Human | O88597 Mouse | Q91XJ1 Rat

Recommended Dilutions:
WB 1:10,000

Storage Buffer: PBS (pH7.4), 0.1% BSA, 40% Glycerol. Preservative: 0.05% Sodium Azide.

Storage Instruction: Shipped at 4°C. Store at +4°C short term (1-2 weeks). It is recommended to aliquot into single-use upon delivery. Store at -20°C long term.

Purity: Protein A affinity purified.

Hangzhou Huaan Biotechnology Co., Ltd.

Orders: 0086-571-88062880

Technical: 0086-571-89986345

Service mail: support@huabio.cn

华安生物
HUABIO
www.huabio.cn

Applications: WB=Western blot IHC-P=Immunohistochemistry (paraffin) IF-Cell=Immunofluorescence (Cell) IF-Tissue=Immunofluorescence (Tissue) FC=Flow cytometry IP=Immunoprecipitation

Images

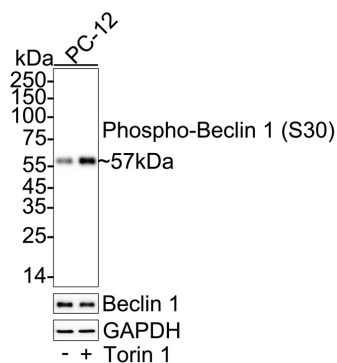


Fig1: Western blot analysis of Phospho-Beclin 1 (S30) on different lysates with Rabbit anti-Phospho-Beclin 1 (S30) antibody (HA723840) at 1/10,000 dilution.

Lane 1: PC-12 cell lysate

Lane 2: PC-12 treated with 250nM Torin 1 for 2 hours cell lysate

Lysates/proteins at 20 µg/Lane.

Predicted band size: 52 kDa

Observed band size: 57 kDa

Exposure time: 3 minutes; ECL: K1801;

4-20% SDS-PAGE gel.

Proteins were transferred to a PVDF membrane and blocked with 5% NFDM/TBST for 1 hour at room temperature. The primary antibody (HA723840) at 1/10,000 dilution was used in primary antibody dilution (K1803) at 4 °C overnight. Goat Anti-Rabbit IgG - HRP Secondary Antibody (HA1001) at 1/50,000 dilution was used for 1 hour at room temperature.

Note: All products are "FOR RESEARCH USE ONLY AND ARE NOT INTENDED FOR DIAGNOSTIC OR THERAPEUTIC USE".

Background References

1. Hill SM et al. VCP/p97 regulates Beclin-1-dependent autophagy initiation. Nat Chem Biol. 2021 Apr
2. Liu Y et al. TLR9 and beclin 1 crosstalk regulates muscle AMPK activation in exercise. Nature. 2020 Feb

Hangzhou Huaan Biotechnology Co., Ltd.

Orders:0086-571-88062880

Technical:0086-571-89986345

Service mail:support@huabio.cn

华安生物
HUABIO
www.huabio.cn

Applications:WB=Western blot IHC-P=Immunohistochemistry (paraffin) IF-Cell=Immunofluorescence (Cell) IF-Tissue=Immunofluorescence (Tissue) FC=Flow cytometry IP=Immunoprecipitation