

# PE Conjugated Anti-CD20 Antibody [PSH08-12]

## HA723839F



<b>Product Type:</b>	Recombinant Rabbit monoclonal IgG, primary antibodies
<b>Species reactivity:</b>	Human
<b>Applications:</b>	FC
<b>Molecular Wt:</b>	Predicted band size: 33 kDa
<b>Clone number:</b>	PSH08-12

**Description:** B-lymphocyte antigen CD20 or CD20 is B lymphocyte cell-surface molecule. It is a 33-37 kDa non-glycosylated protein. CD20 is expressed on the surface of B-cells from the pre-B phase, the expression is lost in terminally differentiated plasma cells. CD20 is used as a therapeutic target of B-cell malignancies and autoimmune diseases.

**Conjugate:** PE

**Immunogen:** Recombinant protein within human CD20 aa 121-209.

**Positive control:** Human peripheral blood.

**Subcellular location:** Cell membrane.

**Database links:** SwissProt: P11836 Human

**Recommended Dilutions:**

**FC** 5 µl per million cells in 100 µl staining volume or 5 µl per 100 µl of whole blood.

**Storage Buffer:** Supplied in phosphate-buffered solution, pH 7.2, containing 0.2% ProClean 950 and BSA.

**Storage Instruction:** Shipped at 4°C. Store at +4°C short term (1-2 weeks). It is recommended to aliquot into single-use upon delivery. Store at -20°C long term.

**Purity:** Protein A affinity purified.

Hangzhou Huaan Biotechnology Co., Ltd.

Orders: 0086-571-88062880

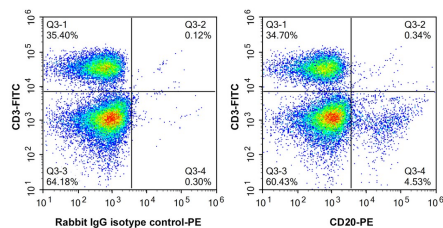
Technical: 0086-571-89986345

Service mail: support@huabio.cn

 华安生物  
HUABIO  
www.huabio.cn

Applications: WB=Western blot IHC-P=Immunohistochemistry (paraffin) IF-Cell=Immunofluorescence (Cell) IF-Tissue=Immunofluorescence (Tissue) FC=Flow cytometry IP=Immunoprecipitation

## Images



**Fig1:** Flow cytometric analysis of human peripheral blood cells labelling CD20 (HA723839F, PE) and CD3 (HA600116F, FITC).

Cells were washed twice with cold PBS and resuspend. Then incubated for 1 hour at +4℃ with CD20 (HA723839F, PE, 1/1,000) compared with Rabbit IgG Isotype Control (PE, 1/1,000).

**Note:** All products are “FOR RESEARCH USE ONLY AND ARE NOT INTENDED FOR DIAGNOSTIC OR THERAPEUTIC USE”.

## Background References

1. de Sèze J et al. Anti-CD20 therapies in multiple sclerosis: From pathology to the clinic. Front Immunol. 2023 Mar
2. Margoni M et al. Anti-CD20 therapies for multiple sclerosis: current status and future perspectives. J Neurol. 2022 Mar

Hangzhou Huaan Biotechnology Co., Ltd.

Orders:0086-571-88062880

Technical:0086-571-89986345

Service mail:support@huabio.cn

华安生物  
HUABIO  
www.huabio.cn

Applications:WB=Western blot IHC-P=Immunohistochemistry (paraffin) IF-Cell=Immunofluorescence (Cell) IF-Tissue=Immunofluorescence (Tissue) FC=Flow cytometry IP=Immunoprecipitation