

# Anti-CD62L Antibody [PSH15-59]

HA723766



<b>Product Type:</b>	Recombinant Rabbit monoclonal IgG, primary antibodies
<b>Species reactivity:</b>	Human
<b>Applications:</b>	FC
<b>Molecular Wt:</b>	Predicted band size: 42 kDa
<b>Clone number:</b>	PSH15-59

**Description:** L-selectin, also known as CD62L, is a cell adhesion molecule found on the cell surface of leukocytes, and the blastocyst. It is coded for in the human by the SELL gene. L-selectin belongs to the selectin family of proteins, which recognize sialylated carbohydrate groups containing a Sialyl LewisX (sLeX) determinant. L-selectin plays an important role in both the innate and adaptive immune responses by facilitating leukocyte-endothelial cell adhesion events. These tethering interactions are essential for the trafficking of monocytes and neutrophils into inflamed tissue as well as the homing of lymphocytes to secondary lymphoid organs. L-selectin is also expressed by lymphoid primed hematopoietic stem cells and may participate in the migration of these stem cells to the primary lymphoid organs. In addition to its function in the immune response, L-selectin is expressed on embryonic cells and facilitates the attachment of the blastocyst to the endometrial endothelium during human embryo implantation. L-selectin is composed of multiple structural regions: an N-terminus C-type lectin domain, an adjacent epidermal growth factor-like domain, two to the consensus repeat units homologous to those found in C3/C4-binding proteins, an extracellular cleavage site, a short transmembrane domain, and a cytoplasmic tail. It is cleaved by ADAM17.

**Immunogen:** Recombinant protein within human CD62L aa 1-332.

**Positive control:** Human peripheral blood cells, Jurkat.

**Subcellular location:** Cell membrane.

**Database links:** SwissProt: P14151 Human

**Recommended Dilutions:**  
**FC** 5  $\mu$ l per million cells in 100  $\mu$ l staining volume or 5  $\mu$ l per 100  $\mu$ l of whole blood.

**Storage Buffer:** 1\*PBS (pH7.4), 1% BSA, 0.2% Proclean 950.

**Storage Instruction:** Shipped at 4°C. Store at +4°C short term (1-2 weeks). It is recommended to aliquot into single-use upon delivery. Store at -20°C long term.

**Purity:** Protein A affinity purified.

Hangzhou Huaan Biotechnology Co., Ltd.

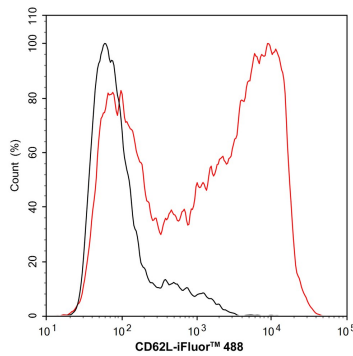
Orders:0086-571-88062880

Technical:0086-571-89986345

Service mail:support@huabio.cn

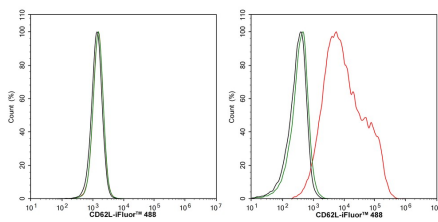
 华安生物  
HUABIO  
www.huabio.cn

## Images



**Fig1:** Flow cytometric analysis of human peripheral blood cells labeling CD62L.

Cells were washed twice with cold PBS and resuspend. Then stained with the primary antibody (HA723766) (red). After incubation of the primary antibody at +4°C for an hour, the cells were stained with a iFluor™ 488 conjugate-Goat anti-Rabbit IgG Secondary antibody (HA1121) at 1/1,000 dilution for 30 minutes at +4°C. Unlabelled sample was used as a control (cells without incubation with primary antibody; black).



**Fig2:** Flow cytometric analysis of 293T (left, negative) and Jurkat (right, positive) cells labeling CD62L.

Cells were washed twice with cold PBS and resuspend. Then stained with the primary antibody (HA723766) (red) compared with Rabbit IgG Isotype Control (green). After incubation of the primary antibody at +4°C for an hour, the cells were stained with a iFluor™ 488 conjugate-Goat anti-Rabbit IgG Secondary antibody (HA1121) at 1/1,000 dilution for 30 minutes at +4°C. Unlabelled sample was used as a control (cells without incubation with primary antibody; black).

**Note:** All products are "FOR RESEARCH USE ONLY AND ARE NOT INTENDED FOR DIAGNOSTIC OR THERAPEUTIC USE".

## Background References

1. Vultaggio A et al. Blood CD62L(low) inflammatory eosinophils are related to the severity of asthma and reduced by mepolizumab. Allergy. 2023 Dec
2. Ito Y et al. CD62L expression level determines the cell fate of myeloid progenitors. Stem Cell Reports. 2021 Dec

Hangzhou Huaan Biotechnology Co., Ltd.

Orders:0086-571-88062880

Technical:0086-571-89986345

Service mail:support@huabio.cn

华安生物  
HUABIO  
www.huabio.cn