

# Anti-C Reactive Protein Antibody [PSH15-35]

## HA723739



<b>Product Type:</b>	Recombinant Rabbit multiclonal IgG, primary antibodies
<b>Species reactivity:</b>	Human, Mouse, Rat
<b>Applications:</b>	WB
<b>Molecular Wt:</b>	Predicted band size: 25 kDa
<b>Clone number:</b>	PSH15-35

**Description:** C-reactive protein (CRP) is an annular (ring-shaped) pentameric protein found in blood plasma, whose circulating concentrations rise in response to inflammation. It is an acute-phase protein of hepatic origin that increases following interleukin-6 secretion by macrophages and T cells. Its physiological role is to bind to lysophosphatidylcholine expressed on the surface of dead or dying cells (and some types of bacteria) in order to activate the complement system via C1q. CRP is synthesized by the liver in response to factors released by macrophages, T cells and fat cells (adipocytes). It is a member of the pentraxin family of proteins. It is not related to C-peptide (insulin) or protein C (blood coagulation). C-reactive protein was the first pattern recognition receptor (PRR) to be identified.

**Positive control:** Human serum tissue lysate, Human plasma tissue lysate, Mouse serum tissue lysate, Mouse plasma tissue lysate, Rat plasma tissue lysate.

**Subcellular location:** Secreted.

**Database links:** SwissProt: P02741 Human | P14847 Mouse | P48199 Rat

**Recommended Dilutions:**  
**WB** 1:5,000

**Storage Buffer:** PBS (pH7.4), 0.1% BSA, 40% Glycerol. Preservative: 0.05% Sodium Azide.

**Storage Instruction:** Shipped at 4°C. Store at +4°C short term (1-2 weeks). It is recommended to aliquot into single-use upon delivery. Store at -20°C long term.

**Purity:** Protein A affinity purified.

Hangzhou Huaan Biotechnology Co., Ltd.

Orders: 0086-571-88062880

Technical: 0086-571-89986345

Service mail: support@huabio.cn

华安生物  
HUABIO  
www.huabio.cn

Applications: WB=Western blot IHC-P=Immunohistochemistry (paraffin) IF-Cell=Immunofluorescence (Cell) IF-Tissue=Immunofluorescence (Tissue) FC=Flow cytometry IP=Immunoprecipitation

## Images

**Fig1:** Western blot analysis of C Reactive Protein on different lysates with Rabbit anti-C Reactive Protein antibody (HA723739) at 1/5,000 dilution.

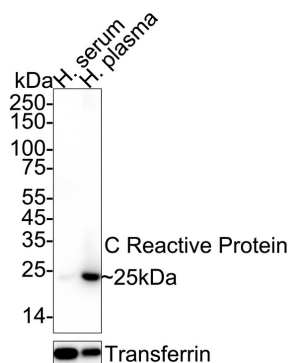
Lane 1: Human serum tissue lysate  
Lane 2: Human plasma tissue lysate

Lysates/proteins at 40 µg/Lane.

Predicted band size: 25 kDa  
Observed band size: 25 kDa

Exposure time: 7 seconds; ECL: K1801;

4-20% SDS-PAGE gel.



Proteins were transferred to a PVDF membrane and blocked with 5% NFDM/TBST for 1 hour at room temperature. The primary antibody (HA723739) at 1/5,000 dilution was used in primary antibody dilution (K1803) at 4°C overnight. Goat Anti-Rabbit IgG - HRP Secondary Antibody (HA1001) at 1/50,000 dilution was used for 1 hour at room temperature.

**Fig2:** Western blot analysis of C Reactive Protein on different lysates with Rabbit anti-C Reactive Protein antibody (HA723739) at 1/5,000 dilution.

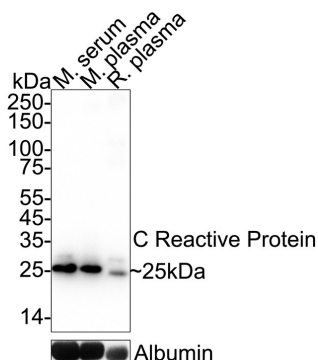
Lane 1: Mouse serum tissue lysate  
Lane 2: Mouse plasma tissue lysate  
Lane 3: Rat plasma tissue lysate

Lysates/proteins at 40 µg/Lane.

Predicted band size: 25 kDa  
Observed band size: 25 kDa

Exposure time: 7 seconds; ECL: K1801;

4-20% SDS-PAGE gel.



Proteins were transferred to a PVDF membrane and blocked with 5% NFDM/TBST for 1 hour at room temperature. The primary antibody (HA723739) at 1/5,000 dilution was used in primary antibody dilution (K1803) at 4°C overnight. Goat Anti-Rabbit IgG - HRP Secondary Antibody (HA1001) at 1/50,000 dilution was used for 1 hour at room temperature.

Hangzhou Huaan Biotechnology Co., Ltd.

Orders:0086-571-88062880

Technical:0086-571-89986345

Service mail:support@huabio.cn

华安生物  
HUABIO  
www.huabio.cn

Applications:WB=Western blot IHC-P=Immunohistochemistry (paraffin) IF-Cell=Immunofluorescence (Cell) IF-Tissue=Immunofluorescence (Tissue) FC=Flow cytometry IP=Immunoprecipitation

---

**Note:** All products are "FOR RESEARCH USE ONLY AND ARE NOT INTENDED FOR DIAGNOSTIC OR THERAPEUTIC USE".

---

### Background References

1. Zhu M et al. C-reactive protein and cancer risk: a pan-cancer study of prospective cohort and Mendelian randomization analysis. BMC Med. 2022 Sep
2. Pope JE et al. C-reactive protein and implications in rheumatoid arthritis and associated comorbidities. Semin Arthritis Rheum. 2021 Feb

**Hangzhou Huaan Biotechnology Co., Ltd.**

Orders:0086-571-88062880

Technical:0086-571-89986345

Service mail:support@huabio.cn

 华安生物  
HUAABIO  
www.huabio.cn

Applications:WB=Western blot IHC-P=Immunohistochemistry (paraffin) IF-Cell=Immunofluorescence (Cell) IF-Tissue=Immunofluorescence (Tissue) FC=Flow cytometry IP=Immunoprecipitation