

Anti-CD11c Antibody [PSH13-25]

HA723512



Product Type:	Recombinant Rabbit multiclonal IgG, primary antibodies
Species reactivity:	Human, Mouse
Applications:	WB, IHC-Fr, IHC-P
Molecular Wt:	Predicted band size: 129 kDa
Clone number:	PSH13-25

Description: CD11c is an integrin alpha X chain protein. Integrins are heterodimeric integral membrane proteins composed of an alpha chain and a beta chain. This protein combines with the beta 2 chain (ITGB2) to form a leukocyte-specific integrin referred to as inactivated-C3b (iC3b) receptor 4 (CR4). The alpha X beta 2 complex seems to overlap the properties of the alpha M beta 2 integrin in the adherence of neutrophils and monocytes to stimulated endothelium cells, and in the phagocytosis of complement coated particles.

Immunogen: Recombinant protein within mouse CD11c aa 616-936 / 1,169.

Positive control: THP-1 starved for 2 hours then add 100ng/mL TPA for 48 hours cell lysate, RAW264.7 cell lysate, Mouse colon tissue lysate, Mouse spleen tissue lysate, human Hodgkin's lymphoma tissue, human spleen tissue, mouse spleen tissue.

Subcellular location: Membrane.

Database links: SwissProt: P20702 Human | Q9QXH4 Mouse

Recommended Dilutions:

WB	1:5,000
IHC-Fr	1:500
IHC-P	1:1,000

Storage Buffer: PBS (pH7.4), 0.1% BSA, 40% Glycerol. Preservative: 0.05% Sodium Azide.

Storage Instruction: Store at +4℃ after thawing. Aliquot store at -20℃. Avoid repeated freeze / thaw cycles.

Purity: Protein A affinity purified.

Hangzhou Huaan Biotechnology Co., Ltd.

Orders: 0086-571-88062880

Technical: 0086-571-89986345

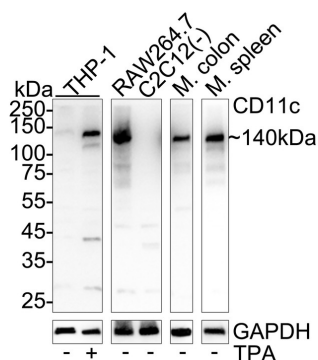
Service mail: support@huabio.cn

 华安生物
HUABIO
www.huabio.cn

Applications: WB=Western blot IHC-P=Immunohistochemistry (paraffin) IF-Cell=Immunofluorescence (Cell) IF-Tissue=Immunofluorescence (Tissue) FC=Flow cytometry IP=Immunoprecipitation

Images

Fig1: Western blot analysis of CD11c on different lysates with Rabbit anti-CD11c antibody (HA723512) at 1/5,000 dilution.



Lane 1: THP-1 cell lysate

Lane 2: THP-1 starved for 2 hours then add 100ng/mL TPA for 48 hours cell lysate

Lane 3: RAW264.7 cell lysate (20 µg/Lane)

Lane 4: C2C12 cell lysate (negative) (20 µg/Lane)

Lane 5: Mouse colon tissue lysate (40 µg/Lane)

Lane 6: Mouse spleen tissue lysate (40 µg/Lane)

Lysates/proteins at 20 µg/Lane.

Predicted band size: 129 kDa

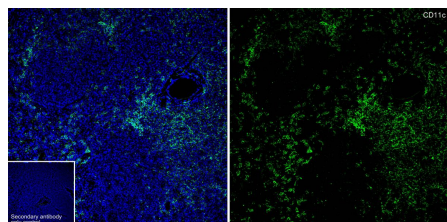
Observed band size: 140 kDa

Exposure time: Lane 1-2: 59 seconds; Lane 3-5: 25 seconds; Lane 6: 8 seconds; ECL: K1801;

4-20% SDS-PAGE gel.

Proteins were transferred to a PVDF membrane and blocked with 5% NFDM/TBST for 1 hour at room temperature. The primary antibody (HA723512) at 1/5,000 dilution was used in primary antibody dilution (K1803) at 4°C overnight. Goat Anti-Rabbit IgG - HRP Secondary Antibody (HA1001) at 1/50,000 dilution was used for 1 hour at room temperature.

Fig2: Application: IHC-Fr



Species: Mouse

Site: spleen

Sample: Frozen section

Antibody concentration: 1/500

Antigen retrieval: Not required

Hangzhou Huaan Biotechnology Co., Ltd.

Orders:0086-571-88062880

Technical:0086-571-89986345

Service mail:support@huabio.cn

华安生物
HUABIO
www.huabio.cn

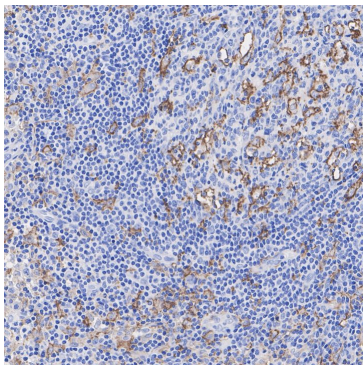


Fig3: Immunohistochemical analysis of paraffin-embedded human Hodgkin's lymphoma tissue with Rabbit anti-CD11c antibody (HA723512) at 1/1,000 dilution.

The section was pre-treated using heat mediated antigen retrieval with Tris-EDTA buffer (pH 9.0) for 20 minutes. The tissues were blocked in 1% BSA for 20 minutes at room temperature, washed with ddH₂O and PBS, and then probed with the primary antibody (HA723512) at 1/1,000 dilution for 1 hour at room temperature. The detection was performed using an HRP conjugated compact polymer system. DAB was used as the chromogen. Tissues were counterstained with hematoxylin and mounted with DPX.

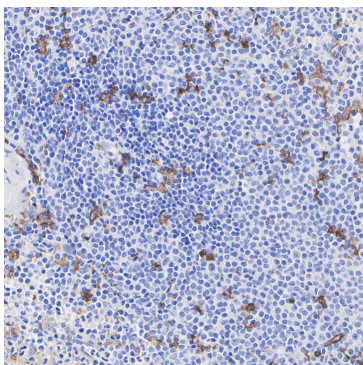


Fig4: Immunohistochemical analysis of paraffin-embedded human spleen tissue with Rabbit anti-CD11c antibody (HA723512) at 1/1,000 dilution.

The section was pre-treated using heat mediated antigen retrieval with Tris-EDTA buffer (pH 9.0) for 20 minutes. The tissues were blocked in 1% BSA for 20 minutes at room temperature, washed with ddH₂O and PBS, and then probed with the primary antibody (HA723512) at 1/1,000 dilution for 1 hour at room temperature. The detection was performed using an HRP conjugated compact polymer system. DAB was used as the chromogen. Tissues were counterstained with hematoxylin and mounted with DPX.

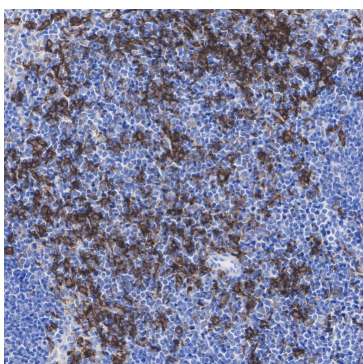


Fig5: Immunohistochemical analysis of paraffin-embedded mouse spleen tissue with Rabbit anti-CD11c antibody (HA723512) at 1/1,000 dilution.

The section was pre-treated using heat mediated antigen retrieval with Tris-EDTA buffer (pH 9.0) for 20 minutes. The tissues were blocked in 1% BSA for 20 minutes at room temperature, washed with ddH₂O and PBS, and then probed with the primary antibody (HA723512) at 1/1,000 dilution for 1 hour at room temperature. The detection was performed using an HRP conjugated compact polymer system. DAB was used as the chromogen. Tissues were counterstained with hematoxylin and mounted with DPX.

Note: All products are "FOR RESEARCH USE ONLY AND ARE NOT INTENDED FOR DIAGNOSTIC OR THERAPEUTIC USE".

Background References

1. Helft J, Böttcher J, Chakravarty P, Zelenay S, Huotari J, Schraml BU, Goubau D, Reis e Sousa C. GM-CSF Mouse Bone Marrow Cultures Comprise a Heterogeneous Population of CD11c(+)MHCII(+) Macrophages and Dendritic Cells. *Immunity*. 2015 Jun 16;42(6):1197-211. doi: 10.1016/j.immuni.2015.05.018. PMID: 26084029.
2. Tse BCY, Bergamin S, Steffen P, Hraby G, Pavlakis N, Clarke SJ, Evans J, Engel A, Kneebone A, Molloy MP. CD11c+ and IRF8+ cell densities in rectal cancer biopsies predict outcomes of neoadjuvant chemoradiotherapy. *Oncoimmunology*. 2023 Jul 20;12(1):2238506. doi: 10.1080/2162402X.2023.2238506. PMID: 37485033; PMCID: PMC10361136.

Hangzhou Huaan Biotechnology Co., Ltd.

Orders:0086-571-88062880

Technical:0086-571-89986345

Service mail:support@huabio.cn

 华安生物
HUAABIO
www.huabio.cn

Applications:WB=Western blot IHC-P=Immunohistochemistry (paraffin) IF-Cell=Immunofluorescence (Cell) IF-Tissue=Immunofluorescence (Tissue) FC=Flow cytometry IP=Immunoprecipitation