

Anti-Human TSLP Antibody [PSH12-90] - BSA and Azide free (Detector)

HA723491



Product Type:	Recombinant Rabbit monoclonal IgG, primary antibodies
Species reactivity:	Human
Applications:	ELISA(Det)
Clone number:	PSH12-90

Description: This gene encodes a hemopoietic cytokine proposed to signal through a heterodimeric receptor complex composed of the thymic stromal lymphopoietin receptor and the IL-7R alpha chain. It mainly impacts myeloid cells and induces the release of T cell-attracting chemokines from monocytes and enhances the maturation of CD11c(+) dendritic cells. The protein promotes T helper type 2 (TH2) cell responses that are associated with immunity in various inflammatory diseases, including asthma, allergic inflammation and chronic obstructive pulmonary disease. The protein is therefore considered a potential therapeutic target for the treatment of such diseases. In addition, the shorter (predominant) isoform is an antimicrobial protein, displaying antibacterial and antifungal activity against *B. cereus*, *E. coli*, *E. faecalis*, *S. mitis*, *S. epidermidis*, and *C. albicans*. Alternative splicing of this gene results in multiple transcript variants.

Immunogen: Recombinant protein within Human TSLP aa 29-159 (HA210952).

Positive control: Recombinant Human TSLP protein (HA210952).

Subcellular location: Secreted.

Database links: SwissProt: Q969D9 Human

Recommended Dilutions:

ELISA(Det) Use at an assay dependent concentration. Can be paired for Sandwich ELISA with Rabbit monoclonal [PSH12-89] to Human TSLP antibody (Capture) (HA723490) and recombinant Human TSLP protein (HA210952) as the standard. The reference range value is 15.6-2,000 pg/mL.

Storage Buffer: PBS (pH7.4).

Storage Instruction: Store at +4°C after thawing. Aliquot store at -20°C. Avoid repeated freeze / thaw cycles.

Purity: Protein A affinity purified.

Hangzhou Huaan Biotechnology Co., Ltd.

Orders:0086-571-88062880

Technical:0086-571-89986345

Service mail:support@huabio.cn

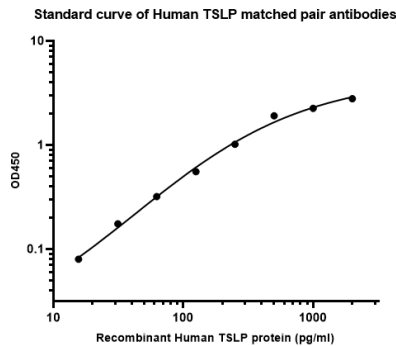
 华安生物
HUABIO
www.huabio.cn

Applications:WB=Western blot IHC-P=Immunohistochemistry (paraffin) IF-Cell=Immunofluorescence (Cell) IF-Tissue=Immunofluorescence (Tissue) FC=Flow cytometry IP=Immunoprecipitation

Images

Fig1: Sandwich ELISA analysis of Human TSLP matched pair antibodies

Capture: HA723490, Human TSLP Rabbit mAb [PSH12-89]
Detector: HA723491, Human TSLP Rabbit mAb [PSH12-90]



Elisa assay was performed by coating wells of a 96-well plate with 50 μ l per well of capture antibody (HA723490) diluted in carbonate/bicarbonate buffer, at a concentration of 5 μ g/ml overnight at 4 $^{\circ}$ C. Wells of the plate were washed, blocked with 150 μ l 0.05% tween-20 1% BSA blocking buffer, and incubated with serial diluted Recombinant Human TSLP protein (HA210952) starting from 1,000 pg/ml to 0 pg/ml and detect antibody (HA723491, Biotin, 0.2 μ g/ml) for 1 hour at 30 $^{\circ}$ C with shaking. Then the plate was washed and incubated with 50 μ l per well of SA-HRP for 0.5 hour at 30 $^{\circ}$ C with shaking. Detection was performed using an Ultra TMB Substrate for 10 minutes at room temperature in the dark. The reaction was stopped with sulfuric acid and absorbances were read on a spectrophotometer at 450 nm.

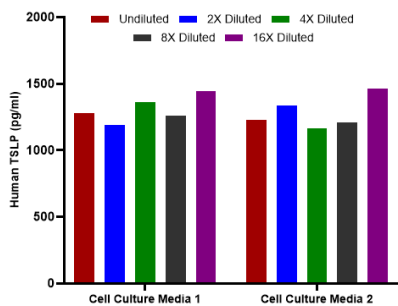


Fig2: Interpolated concentrations of spiked TSLP in human cell culture media samples.

The concentrations of TSLP were interpolated from the TSLP standard curves and corrected for sample dilution. Undiluted samples are as follows: cell culture media 1 25%, cell culture media 2 50%.

Note: All products are “FOR RESEARCH USE ONLY AND ARE NOT INTENDED FOR DIAGNOSTIC OR THERAPEUTIC USE”.

Background References

1. O'Byrne PM et al. Development of an inhaled anti-TSLP therapy for asthma. *Pulm Pharmacol Ther.* 2023 Feb
2. Nakajima S et al. Anti-TSLP antibodies: Targeting a master regulator of type 2 immune responses. *Allergol Int.* 2020 Apr

Hangzhou Huaan Biotechnology Co., Ltd.

Orders:0086-571-88062880

Technical:0086-571-89986345

Service mail:support@huabio.cn

华安生物
HUABIO
www.huabio.cn

Applications:WB=Western blot IHC-P=Immunohistochemistry (paraffin) IF-Cell=Immunofluorescence (Cell) IF-Tissue=Immunofluorescence (Tissue) FC=Flow cytometry IP=Immunoprecipitation