

Anti-Human Nectin-2 Antibody [PSH12-52] - BSA and Azide free (Detector)

HA723461



Product Type:	Recombinant Rabbit monoclonal IgG, primary antibodies
Species reactivity:	Human
Applications:	ELISA(Det)
Clone number:	PSH12-52

Description: Poliovirus receptor-related 2 (PVRL2), also known as nectin-2 and CD112 (formerly herpesvirus entry mediator B, HVEB), is a human plasma membrane glycoprotein. This gene encodes a single-pass type I membrane glycoprotein with two Ig-like C2-type domains and an Ig-like V-type domain. This protein is one of the plasma membrane components of adherens junctions. It also serves as an entry for certain mutant strains of herpes simplex virus and pseudorabies virus, and it is involved in cell to cell spreading of these viruses. Variations in this gene have been associated with differences in the severity of multiple sclerosis. Alternate transcriptional splice variants, encoding different isoforms, have been characterized.

Immunogen: Recombinant protein within Human Nectin-2 aa 32-360 (HA210905).

Positive control: Recombinant Human Nectin-2 protein (HA210905).

Subcellular location: Cell membrane.

Database links: SwissProt: Q92692 Human

Recommended Dilutions:

ELISA(Det) Use at an assay dependent concentration. Can be paired for Sandwich ELISA with Rabbit monoclonal [PSH11-54] to Human Nectin-2 antibody (Capture) (HA723460) or Rabbit monoclonal [PSH12-53] to Human Nectin-2 antibody (Capture) (HA723463) and Recombinant Human Nectin-2 protein (HA210905) as the standard. The reference range value is 39.1-5,000 pg/mL.

Storage Buffer: PBS (pH7.4).

Storage Instruction: Store at +4°C after thawing. Aliquot store at -20°C. Avoid repeated freeze / thaw cycles.

Purity: Protein A affinity purified.

Hangzhou Huaan Biotechnology Co., Ltd.

Orders:0086-571-88062880

Technical:0086-571-89986345

Service mail:support@huabio.cn

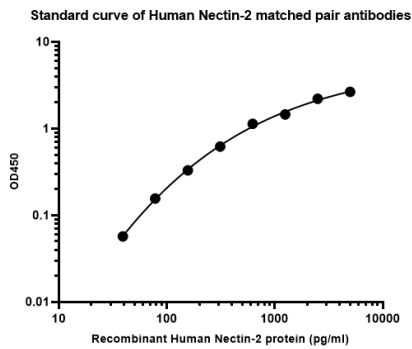
 华安生物
HUABIO
www.huabio.cn

Applications:WB=Western blot IHC-P=Immunohistochemistry (paraffin) IF-Cell=Immunofluorescence (Cell) IF-Tissue=Immunofluorescence (Tissue) FC=Flow cytometry IP=Immunoprecipitation

Images

Fig1: Sandwich ELISA analysis of human Nectin-2 matched pair antibodies

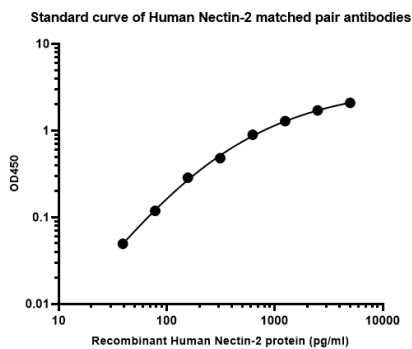
Capture: HA723460, Human Nectin-2 Rabbit mAb [PSH11-54]
Detector: HA723461, Human Nectin-2 Rabbit mAb [PSH12-52]



Elisa assay was performed by coating wells of a 96-well plate with 50 μ l per well of capture antibody (HA723460) diluted in carbonate/bicarbonate buffer, at a concentration of 1 μ g/ml overnight at 4 $^{\circ}$ C. Wells of the plate were washed, blocked with 150 μ l 0.05% tween-20 1% BSA blocking buffer, and incubated with serial diluted Recombinant Human Nectin-2 protein (HA210905) starting from 5,000 pg/ml to 0 pg/ml and detect antibody (HA723461, Biotin, 0.05 μ g/ml) for 1 hour at 30 $^{\circ}$ C with shaking. Then the plate was washed and incubated with 50 μ l per well of SA-HRP for 0.5 hour at 30 $^{\circ}$ C with shaking. Detection was performed using an Ultra TMB Substrate for 10 minutes at room temperature in the dark. The reaction was stopped with sulfuric acid and absorbances were read on a spectrophotometer at 450 nm.

Fig2: Sandwich ELISA analysis of human Nectin-2 matched pair antibodies

Capture: HA723463, Human Nectin-2 Rabbit mAb [PSH12-53]
Detector: HA723461, Human Nectin-2 Rabbit mAb [PSH12-52]



Elisa assay was performed by coating wells of a 96-well plate with 50 μ l per well of capture antibody (HA723463) diluted in carbonate/bicarbonate buffer, at a concentration of 1 μ g/ml overnight at 4 $^{\circ}$ C. Wells of the plate were washed, blocked with 150 μ l 0.05% tween-20 1% BSA blocking buffer, and incubated with serial diluted Recombinant Human Nectin-2 protein (HA210905) starting from 5,000 pg/ml to 0 pg/ml and detect antibody (HA723461, Biotin, 0.05 μ g/ml) for 1 hour at 30 $^{\circ}$ C with shaking. Then the plate was washed and incubated with 50 μ l per well of SA-HRP for 0.5 hour at 30 $^{\circ}$ C with shaking. Detection was performed using an Ultra TMB Substrate for 10 minutes at room temperature in the dark. The reaction was stopped with sulfuric acid and absorbances were read on a spectrophotometer at 450 nm.

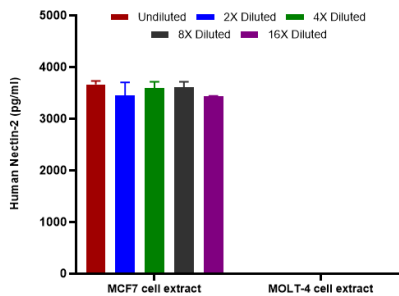


Fig3: Interpolated concentrations of native Nectin-2 in MCF7 and MOLT-4 extract samples based on a 1,000 µg/ml extract load.

Capture: HA723460, Human Nectin-2 Rabbit mAb [PSH11-54]
Detector: HA723461, Human Nectin-2 Rabbit mAb [PSH12-52]

The concentrations of Nectin-2 were measured in duplicates, interpolated from the Nectin-2 standard curve and corrected for sample dilution. Undiluted samples are MOLT-4 extract 50% and MCF7 extract 50%. The interpolated dilution factor corrected values are plotted (mean +/- SD, n=2). The mean Nectin-2 concentration was determined to be 3,548 pg/ml in MCF7 extract and undetectable in MOLT-4 extract.

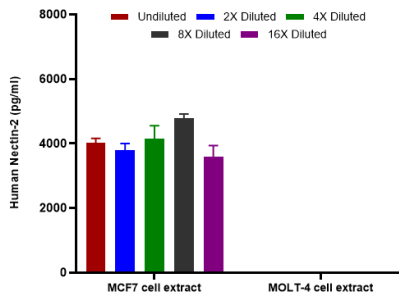


Fig4: Interpolated concentrations of native Nectin-2 in MCF7 and MOLT-4 extract samples based on a 1,000 µg/ml extract load.

Capture: HA723463, Human Nectin-2 Rabbit mAb [PSH12-53]
Detector: HA723461, Human Nectin-2 Rabbit mAb [PSH12-52]

The concentrations of Nectin-2 were measured in duplicates, interpolated from the Nectin-2 standard curve and corrected for sample dilution. Undiluted samples are MOLT-4 extract 50% and MCF7 extract 50%. The interpolated dilution factor corrected values are plotted (mean +/- SD, n=2). The mean Nectin-2 concentration was determined to be 4,062 pg/ml in MCF7 extract and undetectable in MOLT-4 extract.

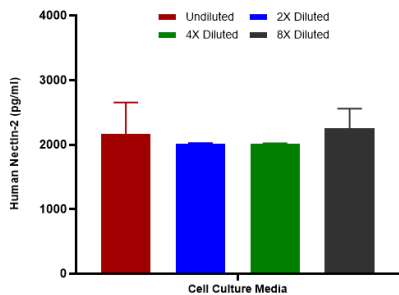


Fig5: Interpolated concentrations of spiked Nectin-2 in human cell culture media samples.

Capture: HA723460, Human Nectin-2 Rabbit mAb [PSH11-54]
Detector: HA723461, Human Nectin-2 Rabbit mAb [PSH12-52]

The concentrations of Nectin-2 were measured in duplicates, interpolated from the Nectin-2 standard curves and corrected for sample dilution. Undiluted samples are as follows: cell culture media 50%. The interpolated dilution factor corrected values are plotted (mean +/- SD, n=2).

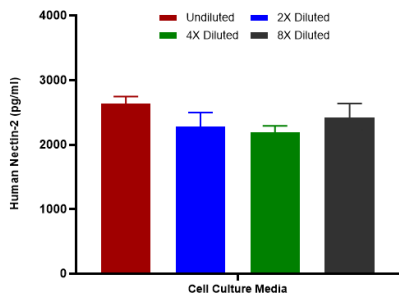


Fig6: Interpolated concentrations of spiked Nectin-2 in human cell culture media samples.

Capture: HA723463, Human Nectin-2 Rabbit mAb [PSH12-53]
Detector: HA723461, Human Nectin-2 Rabbit mAb [PSH12-52]

The concentrations of Nectin-2 were measured in duplicates, interpolated from the Nectin-2 standard curves and corrected for sample dilution. Undiluted samples are as follows: cell culture media 50%. The interpolated dilution factor corrected values are plotted (mean +/- SD, n=2).

Note: All products are “FOR RESEARCH USE ONLY AND ARE NOT INTENDED FOR DIAGNOSTIC OR THERAPEUTIC USE”.

Background References

1. Mizutani K et al. Nectin-2 in general and in the brain. Mol Cell Biochem. 2022 Jan
2. Dekanić A et al. The prognostic significance of Nectin-2 and Nectin-4 expression in glial tumors. Pathol Res Pract. 2023 Apr

Hangzhou Huaan Biotechnology Co., Ltd.

Orders:0086-571-88062880

Technical:0086-571-89986345

Service mail:support@huabio.cn

华安生物
HUABIO
www.huabio.cn

Applications:WB=Western blot IHC-P=Immunohistochemistry (paraffin) IF-Cell=Immunofluorescence (Cell) IF-Tissue=Immunofluorescence (Tissue) FC=Flow cytometry IP=Immunoprecipitation