

# HRP Conjugated Anti-Human PD-L2 Antibody [PSH09-82] - Detector

## HA723373H



<b>Product Type:</b>	Recombinant Rabbit monoclonal IgG, primary antibodies
<b>Species reactivity:</b>	Human
<b>Applications:</b>	ELISA(Det)
<b>Clone number:</b>	PSH09-82

**Description:** Involved in negative regulation of activated T cell proliferation; negative regulation of interferon-gamma production; and negative regulation of interleukin-10 production. Predicted to be located in plasma membrane. Predicted to be active in external side of plasma membrane. Biomarker of pulmonary tuberculosis. Involved in the costimulatory signal, essential for T-cell proliferation and IFNG production in a PDCD1-independent manner. Interaction with PDCD1 inhibits T-cell proliferation by blocking cell cycle progression and cytokine production.

**Conjugate:** HRP-conjugated

**Immunogen:** Recombinant protein within Human PD-L2 Protein aa 20-220 (HA210599)

**Positive control:** Recombinant Human PD-L2 Protein (HA210599).

**Subcellular location:** Cell membrane, Secreted.

**Database links:** SwissProt: Q9BQ51 Human

### Recommended Dilutions:

**ELISA(Det)** Use at an assay dependent concentration. Can be paired for Sandwich ELISA with Rabbit monoclonal [PSH09-80] to Human PD-L2 antibody (Capture) (HA723145) or Rabbit monoclonal [PSH09-81] to Human PD-L2 antibody (Capture) (HA723146) and Recombinant Human PD-L2 protein (HA210599) as the standard.

**Storage Buffer:** PBS (pH7.4), 0.1% BSA, 40% Glycerol.

**Storage Instruction:** Shipped at 4°C. Store at +4°C short term (1-2 weeks). It is recommended to aliquot into single-use upon delivery. Store at -20°C long term.

**Purity:** Protein A affinity purified.

Hangzhou Huaan Biotechnology Co., Ltd.

Orders:0086-571-88062880

Technical:0086-571-89986345

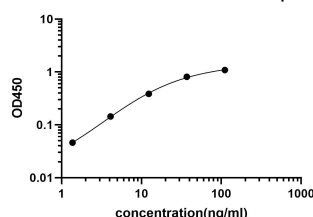
Service mail:support@huabio.cn

 华安生物  
HUABIO  
www.huabio.cn

Applications:WB=Western blot IHC-P=Immunohistochemistry (paraffin) IF-Cell=Immunofluorescence (Cell) IF-Tissue=Immunofluorescence (Tissue) FC=Flow cytometry IP=Immunoprecipitation

## Images

Standard curve of human PD-L2 matched pair antibodies

**Fig1:** Sandwich ELISA analysis of Human PD-L2 matched pair antibodies

Elisa assay was performed by coating wells of a 96-well plate with 100  $\mu$ l per well of capture antibody (HA723146) diluted in carbonate/bicarbonate buffer, at a concentration of 0.5 $\mu$ g/ml overnight at 4 $^{\circ}$ C. Wells of the plate were washed, blocked with 150  $\mu$ l 0.05% tween-20 1% BSA blocking buffer, and incubated with serial diluted Recombinant Human PD-L2 (HA210599) starting from 111.11 ng/ml to 0 ng/ml and detect antibody (HA723373H, HRP, 0.01  $\mu$ g/ml) for 1 hour at 30 $^{\circ}$ C with shaking. Detection was performed using an Ultra TMB Substrate for 10 minutes at room temperature in the dark. The reaction was stopped with sulfuric acid and absorbances were read on a spectrophotometer at 450 nm.

**Note:** All products are "FOR RESEARCH USE ONLY AND ARE NOT INTENDED FOR DIAGNOSTIC OR THERAPEUTIC USE".

## Background References

1. Tseng S.-Y., Otsuji M., Gorski K., Huang X., Slansky J.E., Pai S.I., Shalabi A., Shin T., Pardoll D.M., Tsuchiya H. B7-DC, a new dendritic cell molecule with potent costimulatory properties for T cells. J. Exp. Med. 193:839-846 (2001)
2. Latchman Y., Wood C.R., Chernova T., Chaudhary D., Borde M., Chernova I., Iwai Y., Long A.J., Brown J.A., Freeman G.J. PD-L2 is a second ligand for PD-1 and inhibits T cell activation. Nat. Immunol. 2:261-268 (2001)

Hangzhou Huaan Biotechnology Co., Ltd.

Orders:0086-571-88062880

Technical:0086-571-89986345

Service mail:support@huabio.cn

华安生物  
HUABIO  
www.huabio.cn

Applications:WB=Western blot IHC-P=Immunohistochemistry (paraffin) IF-Cell=Immunofluorescence (Cell) IF-Tissue=Immunofluorescence (Tissue) FC=Flow cytometry IP=Immunoprecipitation