

# Anti-Phospho-Src (S17) Antibody [PSH11-03]

## HA723270



<b>Product Type:</b>	Recombinant Rabbit monoclonal IgG, primary antibodies
<b>Species reactivity:</b>	Human, Mouse, Rat, Monkey
<b>Applications:</b>	WB, IF-Cell, IHC-P, FC, IP
<b>Molecular Wt:</b>	Predicted band size: 60 kDa
<b>Clone number:</b>	PSH11-03

**Description:** Proto-oncogene tyrosine-protein kinase Src, also known as proto-oncogene c-Src, or simply c-Src (cellular Src; pronounced "sarc", as it is short for sarcoma), is a non-receptor tyrosine kinase protein that in humans is encoded by the SRC gene. It belongs to a family of Src family kinases and is similar to the v-Src (viral Src) gene of Rous sarcoma virus. It includes an SH2 domain, an SH3 domain and a tyrosine kinase domain. Two transcript variants encoding the same protein have been found for this gene. c-Src phosphorylates specific tyrosine residues in other tyrosine kinases. It plays a role in the regulation of embryonic development and cell growth. An elevated level of activity of c-Src is suggested to be linked to cancer progression by promoting other signals. Mutations in c-Src could be involved in the malignant progression of colon cancer. c-Src should not be confused with CSK (C-terminal Src kinase), an enzyme that phosphorylates c-Src at its C-terminus and provides negative regulation of Src's enzymatic activity.

**Immunogen:** Synthetic phospho-peptide corresponding to residues surrounding Ser17 of Human Src.

**Positive control:** A549 cell lysate, 293T cell lysate, MCF7 cell lysate, HepG2 cell lysate, Neuro-2a cell lysate, L6 cell lysate, PC-12 cell lysate, COS-1 cell lysate, L6, A549, C2C12, mouse brain tissue, human brain tissue, rat brain tissue.

**Subcellular location:** Cell membrane, Mitochondrion inner membrane, Nucleus, Cytoplasm, cytoskeleton, perinuclear region, Cell junction, focal adhesion.

**Database links:** SwissProt: P12931 Human | P05480 Mouse | Q9WUD9 Rat

**Recommended Dilutions:**

<b>WB</b>	1:1,000
<b>IF-Cell</b>	1:100
<b>IHC-P</b>	1:1,000
<b>FC</b>	1:1,000
<b>IP</b>	1-2µg/sample

**Storage Buffer:** 1\*PBS (pH7.4), 0.1% BSA, 40% Glycerol, 0.2% Proclean 950.

**Storage Instruction:** Shipped at 4°C. Store at +4°C short term (1-2 weeks). It is recommended to aliquot into single-use upon delivery. Store at -20°C long term.

**Purity:** Protein A affinity purified.

Hangzhou Huaan Biotechnology Co., Ltd.

Orders:0086-571-88062880

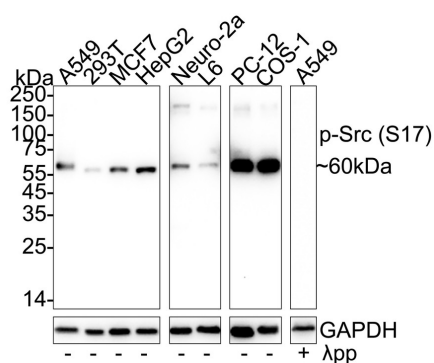
Technical:0086-571-89986345

Service mail:support@huabio.cn

 华安生物  
HUABIO  
www.huabio.cn

## Images

**Fig1:** Western blot analysis of Phospho-Src (S17) on different lysates with Rabbit anti-Phospho-Src (S17) antibody (HA723270) at 1/1,000 dilution.



Lane 1: A549 cell lysate(20 µg/Lane)

Lane 2: 293T cell lysate(20 µg/Lane)

Lane 3: MCF7 cell lysate(20 µg/Lane)

Lane 4: HepG2 cell lysate(20 µg/Lane)

Lane 5: Neuro-2a cell lysate(20 µg/Lane)

Lane 6: L6 cell lysate(20 µg/Lane)

Lane 7: PC-12 cell lysate(20 µg/Lane)

Lane 8: COS-1 cell lysate(20 µg/Lane)

Lane 9: A549 cell lysate, the membrane treated with λpp for 1 hour (20 µg/Lane)

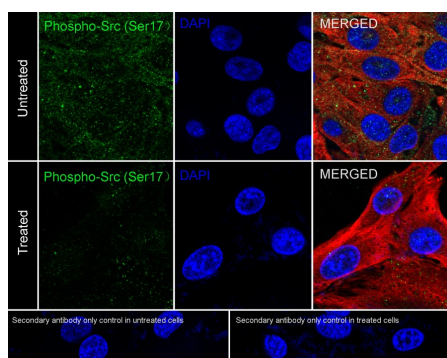
Predicted band size: 60 kDa

Observed band size: 60 kDa

Exposure time: 3 minutes; ECL: K1801;  
4-20% SDS-PAGE gel.

Proteins were transferred to a PVDF membrane and blocked with 5% NFDM/TBST for 1 hour at room temperature. The primary antibody (HA723270) at 1/1,000 dilution was used in 5% NFDM/TBST at 4°C overnight. Goat Anti-Rabbit IgG - HRP Secondary Antibody (HA1001) at 1/50,000 dilution was used for 1 hour at room temperature.

**Fig2:** Immunocytochemistry analysis of L6 cells untreated / treated with λpp labeling Phospho-Src (S17) with Rabbit anti-Phospho-Src (S17) antibody (HA723270) at 1/100 dilution.



Cells were fixed in 4% paraformaldehyde for 15 minutes at room temperature, permeabilized with 0.1% Triton X-100 in PBS for 15 minutes at room temperature, then blocked with 1% BSA in 10% negative goat serum for 1 hour at room temperature. Cells were then incubated with Rabbit anti-Phospho-Src (S17) antibody (HA723270) at 1/100 dilution in 1% BSA in PBST overnight at 4°C. Goat Anti-Rabbit IgG H&L (iFluor™ 488, HA1121) was used as the secondary antibody at 1/1,000 dilution. PBS instead of the primary antibody was used as the secondary antibody only control. Nuclear DNA was labelled in blue with DAPI.

Beta tubulin (HA601187, red) was stained at 1/100 dilution overnight at +4°C. Goat Anti-Mouse IgG H&L (iFluor™ 594, HA1126) was used as the secondary antibody at 1/1,000 dilution.

Hangzhou Huaan Biotechnology Co., Ltd.

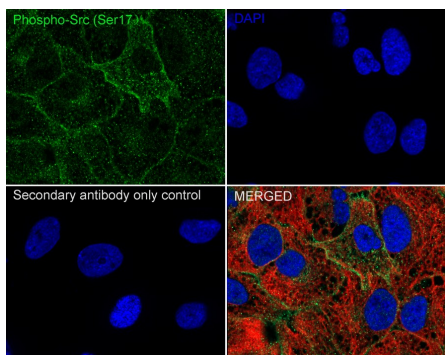
Orders:0086-571-88062880

Technical:0086-571-89986345

Service mail:support@huabio.cn

华安生物  
HUABIO  
www.huabio.cn

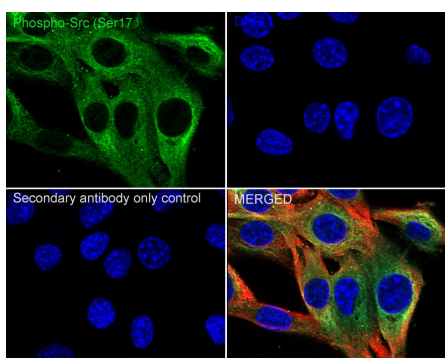
**Fig3:** Immunocytochemistry analysis of A549 cells labeling Phospho-Src (S17) with Rabbit anti-Phospho-Src (S17) antibody (HA723270) at 1/100 dilution.



Cells were fixed in 4% paraformaldehyde for 15 minutes at room temperature, permeabilized with 0.1% Triton X-100 in PBS for 15 minutes at room temperature, then blocked with 1% BSA in 10% negative goat serum for 1 hour at room temperature. Cells were then incubated with Rabbit anti-Phospho-Src (S17) antibody (HA723270) at 1/100 dilution in 1% BSA in PBST overnight at 4 °C. Goat Anti-Rabbit IgG H&L (iFluor™ 488, HA1121) was used as the secondary antibody at 1/1,000 dilution. PBS instead of the primary antibody was used as the secondary antibody only control. Nuclear DNA was labelled in blue with DAPI.

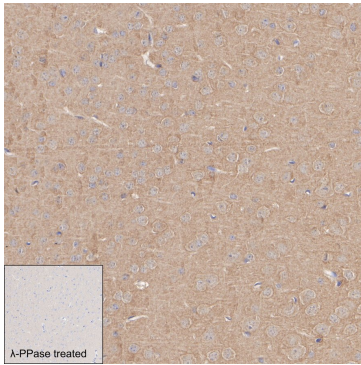
Beta tubulin (HA601187, red) was stained at 1/100 dilution overnight at +4 °C. Goat Anti-Mouse IgG H&L (iFluor™ 594, HA1126) was used as the secondary antibody at 1/1,000 dilution.

**Fig4:** Immunocytochemistry analysis of C2C12 cells labeling Phospho-Src (S17) with Rabbit anti-Phospho-Src (S17) antibody (HA723270) at 1/100 dilution.



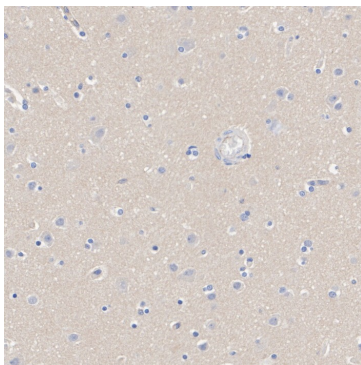
Cells were fixed in 4% paraformaldehyde for 15 minutes at room temperature, permeabilized with 0.1% Triton X-100 in PBS for 15 minutes at room temperature, then blocked with 1% BSA in 10% negative goat serum for 1 hour at room temperature. Cells were then incubated with Rabbit anti-Phospho-Src (S17) antibody (HA723270) at 1/100 dilution in 1% BSA in PBST overnight at 4 °C. Goat Anti-Rabbit IgG H&L (iFluor™ 488, HA1121) was used as the secondary antibody at 1/1,000 dilution. PBS instead of the primary antibody was used as the secondary antibody only control. Nuclear DNA was labelled in blue with DAPI.

Beta tubulin (HA601187, red) was stained at 1/100 dilution overnight at +4 °C. Goat Anti-Mouse IgG H&L (iFluor™ 594, HA1126) was used as the secondary antibody at 1/1,000 dilution.



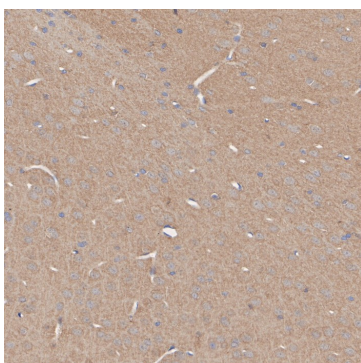
**Fig5:** Immunohistochemical analysis of paraffin-embedded mouse brain tissue untreated / treated with λpp with Rabbit anti-Phospho-Src (S17) antibody (HA723270) at 1/1,000 dilution.

The section was pre-treated using heat mediated antigen retrieval with Tris-EDTA buffer (pH 9.0) for 20 minutes. The tissues were blocked in 1% BSA for 20 minutes at room temperature, washed with ddH<sub>2</sub>O and PBS, and then probed with the primary antibody (HA723270) at 1/1,000 dilution for 1 hour at room temperature. The detection was performed using an HRP conjugated compact polymer system. DAB was used as the chromogen. Tissues were counterstained with hematoxylin and mounted with DPX.



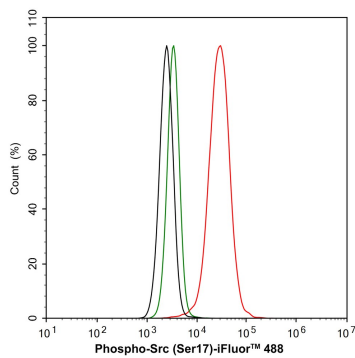
**Fig6:** Immunohistochemical analysis of paraffin-embedded human brain tissue with Rabbit anti-Phospho-Src (S17) antibody (HA723270) at 1/1,000 dilution.

The section was pre-treated using heat mediated antigen retrieval with Tris-EDTA buffer (pH 9.0) for 20 minutes. The tissues were blocked in 1% BSA for 20 minutes at room temperature, washed with ddH<sub>2</sub>O and PBS, and then probed with the primary antibody (HA723270) at 1/1,000 dilution for 1 hour at room temperature. The detection was performed using an HRP conjugated compact polymer system. DAB was used as the chromogen. Tissues were counterstained with hematoxylin and mounted with DPX.



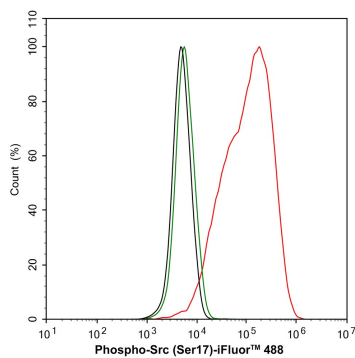
**Fig7:** Immunohistochemical analysis of paraffin-embedded rat brain tissue with Rabbit anti-Phospho-Src (S17) antibody (HA723270) at 1/1,000 dilution.

The section was pre-treated using heat mediated antigen retrieval with Tris-EDTA buffer (pH 9.0) for 20 minutes. The tissues were blocked in 1% BSA for 20 minutes at room temperature, washed with ddH<sub>2</sub>O and PBS, and then probed with the primary antibody (HA723270) at 1/1,000 dilution for 1 hour at room temperature. The detection was performed using an HRP conjugated compact polymer system. DAB was used as the chromogen. Tissues were counterstained with hematoxylin and mounted with DPX.



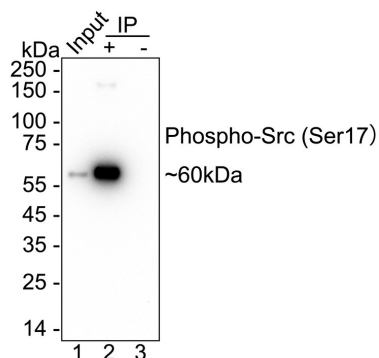
**Fig8:** Flow cytometric analysis of A549 cells labeling Phospho-Src (S17).

Cells were fixed and permeabilized. Then stained with the primary antibody (HA723270, 1/1,000) (red) compared with Rabbit IgG Isotype Control (green). After incubation of the primary antibody at +4°C for an hour, the cells were stained with a iFluor™ 488 conjugate-Goat anti-Rabbit IgG Secondary antibody (HA1121) at 1/1,000 dilution for 30 minutes at +4°C. Unlabelled sample was used as a control (cells without incubation with primary antibody; black).



**Fig9:** Flow cytometric analysis of C2C12 cells labeling Phospho-Src (S17).

Cells were fixed and permeabilized. Then stained with the primary antibody (HA723270, 1/1,000) (red) compared with Rabbit IgG Isotype Control (green). After incubation of the primary antibody at +4°C for an hour, the cells were stained with a iFluor™ 488 conjugate-Goat anti-Rabbit IgG Secondary antibody (HA1121) at 1/1,000 dilution for 30 minutes at +4°C. Unlabelled sample was used as a control (cells without incubation with primary antibody; black).



**Fig10:** Phospho-Src (S17) was immunoprecipitated from 0.2 mg HepG2 cell lysate with HA723270 at 2 µg/10 µl beads. Western blot was performed from the immunoprecipitate using HA723270 at 1/2,000 dilution. HRP Conjugated Anti-Rabbit IgG for IP Nano-secondary antibody at 1/5,000 dilution was used for 1 hour at room temperature.

Lane 1: HepG2 cell lysate (input)

Lane 2: HA723270 IP in HepG2 cell lysate

Lane 3: Rabbit IgG instead of HA723270 in HepG2 cell lysate

Blocking/Dilution buffer: 5% NFDM/TBST

Exposure time: 3 seconds; ECL: K1801

**Note:** All products are "FOR RESEARCH USE ONLY AND ARE NOT INTENDED FOR DIAGNOSTIC OR THERAPEUTIC USE".

## Background References

1. Luo J et al. SRC kinase-mediated signaling pathways and targeted therapies in breast cancer. *Breast Cancer Res.* 2022 Dec
2. Raji L et al. Role of c-Src in Carcinogenesis and Drug Resistance. *Cancers (Basel).* 2023 Dec

Hangzhou Huan Biotechnology Co., Ltd.

Orders:0086-571-88062880

Technical:0086-571-89986345

Service mail:support@huabio.cn

华安生物  
HUABIO  
www.huabio.cn