

Anti-IRE1 Antibody [PSH10-60]

HA723225



| | |
|----------------------------|---|
| Product Type: | Recombinant Rabbit monoclonal IgG, primary antibodies |
| Species reactivity: | Human, Mouse, Rat, Monkey |
| Applications: | WB |
| Molecular Wt: | Predicted band size: 110 kDa |
| Clone number: | PSH10-60 |

Description: The serine/threonine-protein kinase/endoribonuclease inositol-requiring enzyme 1 α (IRE1 α) is an enzyme that in humans is encoded by the ERN1 gene. The protein encoded by this gene is the ER to nucleus signalling 1 protein, a human homologue of the yeast Ire1 gene product. This protein possesses intrinsic kinase activity and an endoribonuclease activity and it is important in altering gene expression as a response to endoplasmic reticulum-based stress signals (mainly the unfolded protein response). Two alternatively spliced transcript variants encoding different isoforms have been found for this gene.

Immunogen: Recombinant protein within human IRE1 aa 1-400.

Positive control: HEK-293 cell lysate, Neuro-2a cell lysate, C6 cell lysate, COS-1 cell lysate.

Subcellular location: Endoplasmic reticulum membrane; nucleus.

Database links: SwissProt: O75460 Human | Q9EQY0 Mouse
Entrez Gene: 498013 Rat

Recommended Dilutions:
WB 1:5,000

Storage Buffer: PBS (pH7.4), 0.05% BSA, 40% Glycerol. Preservative: 0.05% Sodium Azide.

Storage Instruction: Shipped at 4°C. Store at +4°C short term (1-2 weeks). It is recommended to aliquot into single-use upon delivery. Store at -20°C long term.

Purity: Protein A affinity purified.

Hangzhou Huaan Biotechnology Co., Ltd.

Orders: 0086-571-88062880

Technical: 0086-571-89986345

Service mail: support@huabio.cn

华安生物
HUABIO
www.huabio.cn

Applications: WB=Western blot IHC-P=Immunohistochemistry (paraffin) IF-Cell=Immunofluorescence (Cell) IF-Tissue=Immunofluorescence (Tissue) FC=Flow cytometry IP=Immunoprecipitation

Images

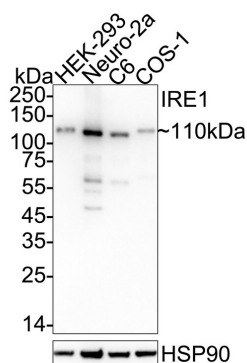
Fig1: Western blot analysis of IRE1 on different lysates with Rabbit anti-IRE1 antibody (HA723225) at 1/5,000 dilution.

Lane 1: HEK-293 cell lysate

Lane 2: Neuro-2a cell lysate

Lane 3: C6 cell lysate

Lane 4: COS-1 cell lysate



Lysates/proteins at 15 µg/Lane.

Predicted band size: 110 kDa

Observed band size: 110 kDa

Exposure time: 1 minute; ECL: K1801;

4-20% SDS-PAGE gel.

Proteins were transferred to a PVDF membrane and blocked with 5% NFDM/TBST for 1 hour at room temperature. The primary antibody (HA723225) at 1/5,000 dilution was used in 5% NFDM/TBST at 4°C overnight. Goat Anti-Rabbit IgG - HRP Secondary Antibody (HA1001) at 1/50,000 dilution was used for 1 hour at room temperature.

Note: All products are "FOR RESEARCH USE ONLY AND ARE NOT INTENDED FOR DIAGNOSTIC OR THERAPEUTIC USE".

Background References

1. Huang R et al. IRE1 signaling regulates chondrocyte apoptosis and death fate in the osteoarthritis. J Cell Physiol. 2022 Jan
2. Grandjean JMD et al. Pharmacologic IRE1/XBP1s activation confers targeted ER proteostasis reprogramming. Nat Chem Biol. 2020 Oct

Hangzhou Huaan Biotechnology Co., Ltd.

Orders:0086-571-88062880

Technical:0086-571-89986345

Service mail:support@huabio.cn

华安生物
HUABIO
www.huabio.cn

Applications:WB=Western blot IHC-P=Immunohistochemistry (paraffin) IF-Cell=Immunofluorescence (Cell) IF-Tissue=Immunofluorescence (Tissue) FC=Flow cytometry IP=Immunoprecipitation