

Anti-KAT6A Antibody [PSH09-88]

HA723157



Product Type:	Recombinant Rabbit monoclonal IgG, primary antibodies
Species reactivity:	Human, Mouse, Rat
Applications:	WB, IF-Cell, IHC-P, FC, ChIP
Molecular Wt:	Predicted band size: 225 kDa
Clone number:	PSH09-88

Description: K(lysine) acetyltransferase 6A (KAT6A), is an enzyme that, in humans, is encoded by the KAT6A gene. This gene is located on human chromosome 8, band 8p11.21. The KAT6A protein contains two nuclear localization domains, a C2HC3 zinc finger and an acetyltransferase domain. This structure suggests that KAT6A functions as a chromatin-bound acetyltransferase. KAT6A is important for the proper development of hematopoietic stem cells.

Immunogen: Recombinant protein within human KAT6A aa 785-1,034.

Positive control: Huh7, human liver tissue, human placenta tissue, mouse liver tissue, mouse placenta tissue, rat liver tissue.

Subcellular location: Nucleus, nucleolus, nucleoplasm, PML body.

Database links: SwissProt: Q92794 Human | Q8BZ21 Mouse | Q5TKR9 Rat

Recommended Dilutions:

WB	1:2,000
IF-Cell	1:500
IHC-P	1:2,000-1:20,000
FC	1:200-1:1,000
ChIP	Use 5 µg for 25 µg of chromatin.

Storage Buffer: PBS (pH7.4), 0.1% BSA, 40% Glycerol. Preservative: 0.05% Sodium Azide.

Storage Instruction: Shipped at 4°C. Store at +4°C short term (1-2 weeks). Store at -20°C long term.

Purity: Protein A affinity purified.

Hangzhou Huaan Biotechnology Co., Ltd.

Orders:0086-571-88062880

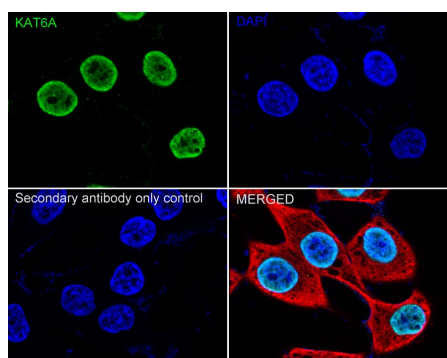
Technical:0086-571-89986345

Service mail:support@huabio.cn

 华安生物
HUABIO
www.huabio.cn

Images

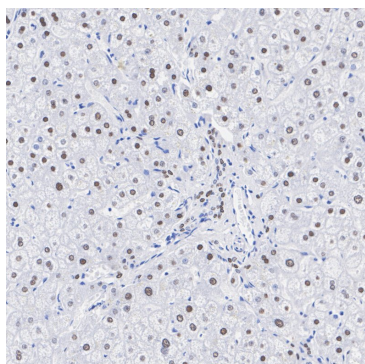
Fig1: Immunocytochemistry analysis of Huh7 cells labeling KAT6A with Rabbit anti-KAT6A antibody (HA723157) at 1/500 dilution.



Cells were fixed in 4% paraformaldehyde for 15 minutes at room temperature, permeabilized with 0.1% Triton X-100 in PBS for 15 minutes at room temperature, then blocked with 1% BSA in 10% negative goat serum for 1 hour at room temperature. Cells were then incubated with Rabbit anti-KAT6A antibody (HA723157) at 1/500 dilution in 1% BSA in PBST overnight at 4 °C. Goat Anti-Rabbit IgG H&L (iFluor™ 488, HA1121) was used as the secondary antibody at 1/1,000 dilution. PBS instead of the primary antibody was used as the secondary antibody only control. Nuclear DNA was labelled in blue with DAPI.

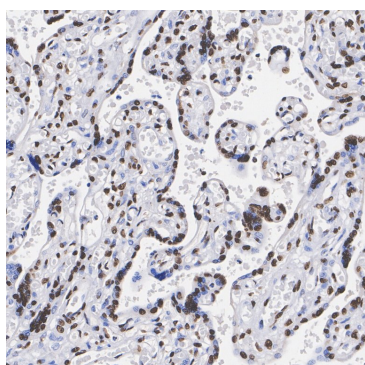
Beta tubulin (HA601187, red) was stained at 1/100 dilution overnight at +4°C. Goat Anti-Mouse IgG H&L (iFluor™ 594, HA1126) was used as the secondary antibody at 1/1,000 dilution.

Fig2: Immunohistochemical analysis of paraffin-embedded human liver tissue with Rabbit anti-KAT6A antibody (HA723157) at 1/20,000 dilution.



The section was pre-treated using heat mediated antigen retrieval with Tris-EDTA buffer (pH 9.0) for 20 minutes. The tissues were blocked in 1% BSA for 20 minutes at room temperature, washed with ddH₂O and PBS, and then probed with the primary antibody (HA723157) at 1/20,000 dilution for 1 hour at room temperature. The detection was performed using an HRP conjugated compact polymer system. DAB was used as the chromogen. Tissues were counterstained with hematoxylin and mounted with DPX.

Fig3: Immunohistochemical analysis of paraffin-embedded human placenta tissue with Rabbit anti-KAT6A antibody (HA723157) at 1/2,000 dilution.



The section was pre-treated using heat mediated antigen retrieval with Tris-EDTA buffer (pH 9.0) for 20 minutes. The tissues were blocked in 1% BSA for 20 minutes at room temperature, washed with ddH₂O and PBS, and then probed with the primary antibody (HA723157) at 1/2,000 dilution for 1 hour at room temperature. The detection was performed using an HRP conjugated compact polymer system. DAB was used as the chromogen. Tissues were counterstained with hematoxylin and mounted with DPX.

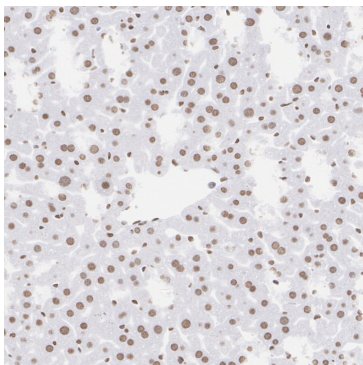


Fig4: Immunohistochemical analysis of paraffin-embedded mouse liver tissue with Rabbit anti-KAT6A antibody (HA723157) at 1/20,000 dilution.

The section was pre-treated using heat mediated antigen retrieval with Tris-EDTA buffer (pH 9.0) for 20 minutes. The tissues were blocked in 1% BSA for 20 minutes at room temperature, washed with ddH₂O and PBS, and then probed with the primary antibody (HA723157) at 1/20,000 dilution for 1 hour at room temperature. The detection was performed using an HRP conjugated compact polymer system. DAB was used as the chromogen. Tissues were counterstained with hematoxylin and mounted with DPX.

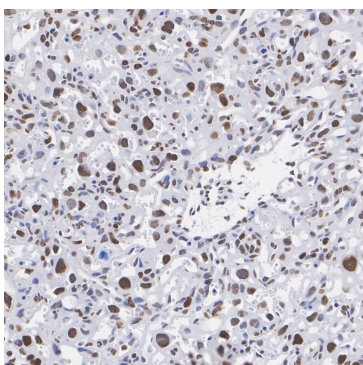


Fig5: Immunohistochemical analysis of paraffin-embedded mouse placenta tissue with Rabbit anti-KAT6A antibody (HA723157) at 1/2,000 dilution.

The section was pre-treated using heat mediated antigen retrieval with Tris-EDTA buffer (pH 9.0) for 20 minutes. The tissues were blocked in 1% BSA for 20 minutes at room temperature, washed with ddH₂O and PBS, and then probed with the primary antibody (HA723157) at 1/2,000 dilution for 1 hour at room temperature. The detection was performed using an HRP conjugated compact polymer system. DAB was used as the chromogen. Tissues were counterstained with hematoxylin and mounted with DPX.

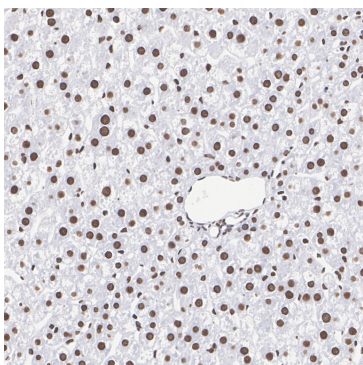


Fig6: Immunohistochemical analysis of paraffin-embedded rat liver tissue with Rabbit anti-KAT6A antibody (HA723157) at 1/2,000 dilution.

The section was pre-treated using heat mediated antigen retrieval with Tris-EDTA buffer (pH 9.0) for 20 minutes. The tissues were blocked in 1% BSA for 20 minutes at room temperature, washed with ddH₂O and PBS, and then probed with the primary antibody (HA723157) at 1/2,000 dilution for 1 hour at room temperature. The detection was performed using an HRP conjugated compact polymer system. DAB was used as the chromogen. Tissues were counterstained with hematoxylin and mounted with DPX.

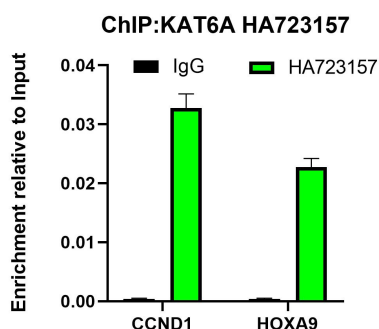


Fig7: Chromatin immunoprecipitations were performed with cross-linked chromatin from Huh7 cells with KAT6A (HA723157) or Normal Rabbit IgG according to the ChIP protocol. The enriched DNA was quantified by real-time PCR using indicated primers. The amount of immunoprecipitated DNA in each sample is represented as signal relative to the total amount of input chromatin, which is equivalent to one.

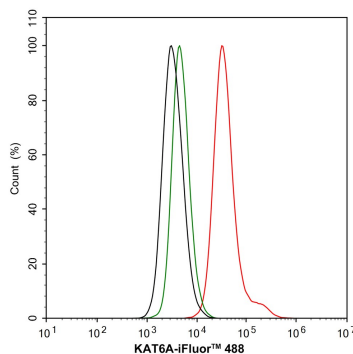


Fig8: Flow cytometric analysis of Huh7 cells labeling KAT6A.

Cells were fixed and permeabilized. Then stained with the primary antibody (HA723157, 1 μ g/mL) (red) compared with Rabbit IgG Isotype Control (green). After incubation of the primary antibody at +4 $^{\circ}$ C for an hour, the cells were stained with a iFluor™ 488 conjugate-Goat anti-Rabbit IgG Secondary antibody (HA1121) at 1/1,000 dilution for 30 minutes at +4 $^{\circ}$ C. Unlabelled sample was used as a control (cells without incubation with primary antibody; black).

Note: All products are “FOR RESEARCH USE ONLY AND ARE NOT INTENDED FOR DIAGNOSTIC OR THERAPEUTIC USE”.

Background References

1. Sharma S et al. Discovery of a highly potent, selective, orally bioavailable inhibitor of KAT6A/B histone acetyltransferases with efficacy against KAT6A-high ER+ breast cancer. *Cell Chem Biol.* 2023 Oct
2. Yan F et al. KAT6A and ENL Form an Epigenetic Transcriptional Control Module to Drive Critical Leukemogenic Gene-Expression Programs. *Cancer Discov.* 2022 Mar

Hangzhou Huaan Biotechnology Co., Ltd.

Orders:0086-571-88062880

Technical:0086-571-89986345

Service mail:support@huabio.cn

华安生物
HUABIO
www.huabio.cn