

Anti-SLP76 Antibody [PSH09-22]

HA723080



Product Type:	Recombinant Rabbit monoclonal IgG, primary antibodies
Species reactivity:	Human
Applications:	WB, IHC-P, IF-Cell, IP
Molecular Wt:	Predicted band size: 60 kDa
Clone number:	PSH09-22

Description: Lymphocyte cytosolic protein 2 (SH2 domain containing leukocyte protein of 76kDa), also known as LCP2 or SLP-76, is a signal-transducing adaptor protein expressed in T cells and myeloid cells and is important in the signaling of T-cell receptors (TCRs). As an adaptor protein, SLP-76 does not have catalytic functions, primarily binding other signaling proteins to form larger signaling complexes. It is a key component of the signaling pathways of receptors with immunoreceptor tyrosine-based activation motifs (ITAMs) such as T-cell receptors, its precursors, and receptors for the Fc regions of certain antibodies. SLP-76 is expressed in T-cells and related lymphocytes like natural killer cells.

Immunogen: Recombinant protein within human SLP76 aa 1- 533/533

Positive control: THP-1 cell lysate, HL-60 cell lysate, THP-1, human spleen tissue, human tonsil tissue.

Subcellular location: Cytoplasm.

Database links: SwissProt: Q13094 Human

Recommended Dilutions:

WB	1:2,000
IHC-P	1:5,000
IF-Cell	1:100
IP	1-2µg/sample

Storage Buffer: PBS (pH7.4), 0.1% BSA, 40% Glycerol. Preservative: 0.05% Sodium Azide.

Storage Instruction: Shipped at 4°C. Store at +4°C short term (1-2 weeks). It is recommended to aliquot into single-use upon delivery. Store at -20°C long term.

Purity: Protein A affinity purified.

Hangzhou Huaan Biotechnology Co., Ltd.

Orders:0086-571-88062880

Technical:0086-571-89986345

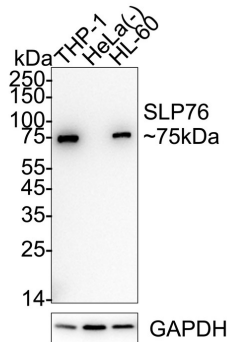
Service mail:support@huabio.cn

 华安生物
HUABIO
www.huabio.cn

Images

Fig1: Western blot analysis of SLP76 on different lysates with Rabbit anti-SLP76 antibody (HA723080) at 1/2,000 dilution.

Lane 1: THP-1 cell lysate
Lane 2: HeLa cell lysate (negative)
Lane 3: HL-60 cell lysate



Lysates/proteins at 20 µg/Lane.

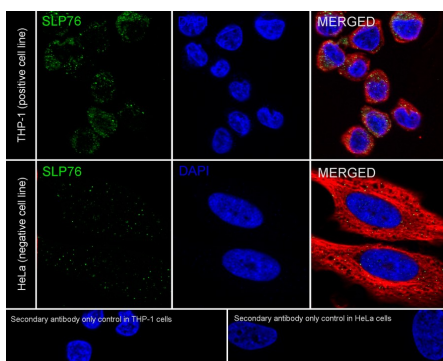
Predicted band size: 60 kDa
Observed band size: 75 kDa

Exposure time: 3 minutes; ECL: K1801;

4-20% SDS-PAGE gel.

Proteins were transferred to a PVDF membrane and blocked with 5% NFDM/TBST for 1 hour at room temperature. The primary antibody (HA723080) at 1/2,000 dilution was used in 5% NFDM/TBST at 4°C overnight. Goat Anti-Rabbit IgG - HRP Secondary Antibody (HA1001) at 1/50,000 dilution was used for 1 hour at room temperature.

Fig2: Immunocytochemistry analysis of THP-1 (positive) and HeLa (negative) labeling SLP76 with Rabbit anti-SLP76 antibody (HA723080) at 1/100 dilution.



Cells were fixed in 4% paraformaldehyde for 15 minutes at room temperature, permeabilized with 0.1% Triton X-100 in PBS for 15 minutes at room temperature, then blocked with 1% BSA in 10% negative goat serum for 1 hour at room temperature. Cells were then incubated with Rabbit anti-SLP76 antibody (HA723080) at 1/100 dilution in 1% BSA in PBST overnight at 4 °C. Goat Anti-Rabbit IgG H&L (iFluor™ 488, HA1121) was used as the secondary antibody at 1/1,000 dilution. PBS instead of the primary antibody was used as the secondary antibody only control. Nuclear DNA was labelled in blue with DAPI.

Beta tubulin (HA601187, red) was stained at 1/100 dilution overnight at +4°C. Goat Anti-Mouse IgG H&L (iFluor™ 594, HA1126) was used as the secondary antibody at 1/1,000 dilution.

Hangzhou Huaan Biotechnology Co., Ltd.

Orders:0086-571-88062880

Technical:0086-571-89986345

Service mail:support@huabio.cn

华安生物
HUABIO
www.huabio.cn

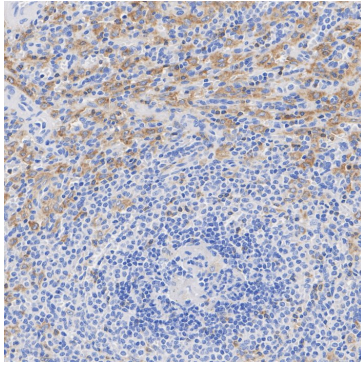


Fig3: Immunohistochemical analysis of paraffin-embedded human spleen tissue with Rabbit anti-SLP76 antibody (HA723080) at 1/5,000 dilution.

The section was pre-treated using heat mediated antigen retrieval with Tris-EDTA buffer (pH 9.0) for 20 minutes. The tissues were blocked in 1% BSA for 20 minutes at room temperature, washed with ddH₂O and PBS, and then probed with the primary antibody (HA723080) at 1/5,000 dilution for 1 hour at room temperature. The detection was performed using an HRP conjugated compact polymer system. DAB was used as the chromogen. Tissues were counterstained with hematoxylin and mounted with DPX.

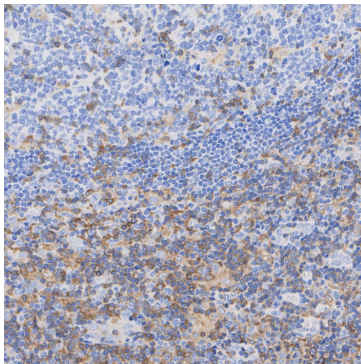


Fig4: Immunohistochemical analysis of paraffin-embedded human tonsil tissue with Rabbit anti-SLP76 antibody (HA723080) at 1/5,000 dilution.

The section was pre-treated using heat mediated antigen retrieval with Tris-EDTA buffer (pH 9.0) for 20 minutes. The tissues were blocked in 1% BSA for 20 minutes at room temperature, washed with ddH₂O and PBS, and then probed with the primary antibody (HA723080) at 1/5,000 dilution for 1 hour at room temperature. The detection was performed using an HRP conjugated compact polymer system. DAB was used as the chromogen. Tissues were counterstained with hematoxylin and mounted with DPX.

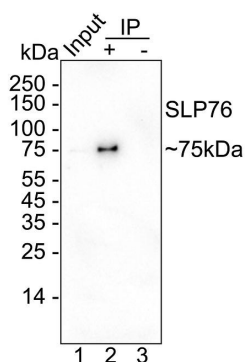


Fig5: SLP76 was immunoprecipitated from 0.2 mg HL-60 cell lysate with HA723080 at 2 µg/10 µl beads. Western blot was performed from the immunoprecipitate using HA723080 at 1/1,000 dilution. Mouse Anti-Rabbit IgG kappa light chain secondary antibody (M1208-2) at 1/5,000 dilution was used for 1 hour at room temperature.

Lane 1: HL-60 cell lysate (input)
 Lane 2: HA723080 IP in HL-60 cell lysate
 Lane 3: Rabbit IgG instead of HA723080 in HL-60 cell lysate

Blocking/Dilution buffer: 5% NFDm/TBST
 Exposure time: 14 seconds; ECL: K1801

Note: All products are "FOR RESEARCH USE ONLY AND ARE NOT INTENDED FOR DIAGNOSTIC OR THERAPEUTIC USE".

Background References

1. Lev A, Asleh M, Levy S, Lee YN, Simon AJ, SLP76 Mutation Associated with Combined Immunodeficiency and EBV-Related Lymphoma. *J Clin Immunol*. 2023 Apr;43(3):625-635. doi: 10.1007/s10875-022-01412-4. Epub 2022 Dec 7. PMID: 36474126.
2. Koretzky GA, Abtahian F, Silverman MA. SLP76 and SLP65: complex regulation of signalling in lymphocytes and beyond. *Nat Rev Immunol*. 2006 Jan;6(1):67-78. doi: 10.1038/nri1750. PMID: 16493428.

Hangzhou Huaan Biotechnology Co., Ltd.

Orders:0086-571-88062880

Technical:0086-571-89986345

Service mail:support@huabio.cn

 华安生物
HUAABIO
www.huabio.cn