

# Anti-beta Amyloid Antibody [PSH08-18]

## HA722961



<b>Product Type:</b>	Recombinant Rabbit monoclonal IgG, primary antibodies
<b>Species reactivity:</b>	Human, Mouse
<b>Applications:</b>	WB, Dot Blot
<b>Molecular Wt:</b>	Predicted band size: 4 kDa
<b>Clone number:</b>	PSH08-18

**Description:** Amyloid-beta precursor protein (APP) is an integral membrane protein expressed in many tissues and concentrated in the synapses of neurons. It functions as a cell surface receptor and has been implicated as a regulator of synapse formation, neural plasticity, antimicrobial activity, and iron export. It is coded for by the gene APP and regulated by substrate presentation. APP is best known as the precursor molecule whose proteolysis generates amyloid beta (A $\beta$ ), a polypeptide containing 37 to 49 amino acid residues, whose amyloid fibrillar form is the primary component of amyloid plaques found in the brains of Alzheimer's disease patients.

**Immunogen:** Synthetic peptide within human beta Amyloid aa 661-710.

**Subcellular location:** Cell membrane, Membrane, Perikaryon, Cell projection, growth cone, Membrane, clathrin-coated pit, Early endosome, Cytoplasmic vesicle.

**Database links:** SwissProt: P05067 Human | P12023 Mouse

**Recommended Dilutions:**

<b>WB</b>	1:2,000
<b>Dot Blot</b>	1:2,000

**Storage Buffer:** PBS (pH7.4), 0.1% BSA, 40% Glycerol. Preservative: 0.05% Sodium Azide.

**Storage Instruction:** Store at +4°C after thawing. Aliquot store at -20°C. Avoid repeated freeze / thaw cycles.

**Purity:** Protein A affinity purified.

Hangzhou Huaan Biotechnology Co., Ltd.

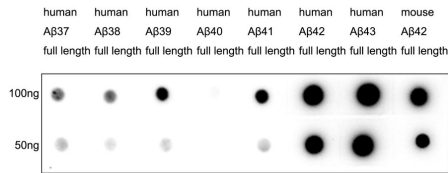
Orders:0086-571-88062880

Technical:0086-571-89986345

Service mail:support@huabio.cn

 华安生物  
HUABIO  
www.huabio.cn

## Images



**Fig1:** Dot blot analysis of beta Amyloid on different proteins with Rabbit anti-beta Amyloid antibody (HA722961) at 1/2,000 dilution. Goat Anti-Rabbit IgG - HRP Secondary Antibody (HA1001) at 1/50,000 dilution for 1 hour at room temperature.

Lane 1: Human A $\beta$ 37 full length peptide

Lane 2: Human A $\beta$ 38 full length peptide

Lane 3: Human A $\beta$ 39 full length peptide

Lane 4: Human A $\beta$ 40 full length peptide

Lane 5: Human A $\beta$ 41 full length peptide

Lane 6: Human A $\beta$ 42 full length peptide

Lane 7: Human A $\beta$ 43 full length peptide

Lane 8: Mouse A $\beta$ 42 full length peptide

Proteins loading: 100ng, 50ng;

Blocking and dilution buffer: 5% NFDm/TBST;

Exposure time: 3 minutes; ECL: K1801.

**Note:** All products are "FOR RESEARCH USE ONLY AND ARE NOT INTENDED FOR DIAGNOSTIC OR THERAPEUTIC USE".

## Background References

1. Ono K et al. Aggregation and structure of amyloid beta-protein. *Neurochem Int.* 2021 Dec
2. Yagi-Utsumi M et al. Conformational Variability of Amyloid-beta and the Morphological Diversity of Its Aggregates. *Molecules.* 2022 Jul

Hangzhou Huaan Biotechnology Co., Ltd.

Orders:0086-571-88062880

Technical:0086-571-89986345

Service mail:support@huabio.cn

华安生物  
HUABIO  
www.huabio.cn