

Anti-ERO1L Antibody [PSH07-30]

HA722818



Product Type:	Recombinant Rabbit monoclonal IgG, primary antibodies
Species reactivity:	Human, Mouse, Rat
Applications:	WB, IHC-P
Molecular Wt:	Predicted band size: 54 kDa
Clone number:	PSH07-30

Description: ERO1-like protein alpha is a protein that in humans is encoded by the ERO1L gene. Oxidoreductase involved in disulfide bond formation in the endoplasmic reticulum. Efficiently reoxidizes P4HB/PDI, the enzyme catalyzing protein disulfide formation, in order to allow P4HB to sustain additional rounds of disulfide formation. Following P4HB reoxidation, passes its electrons to molecular oxygen via FAD, leading to the production of reactive oxygen species (ROS) in the cell. Required for the proper folding of immunoglobulins 1. Plays an important role in ER stress-induced, CHOP-dependent apoptosis by activating the inositol 1,4,5-trisphosphate receptor IP3R1. Involved in the release of the unfolded cholera toxin from reduced P4HB/PDI in case of infection by *V.cholerae*, thereby playing a role in retrotranslocation of the toxin.

Immunogen: Recombinant protein within human ERO1L aa 1-468.

Positive control: HeLa cell lysate, HepG2 cell lysate, Jurkat cell lysate, NIH/3T3 cell lysate, L6 cell lysate, Mouse placenta tissue lysate, human colon tissue.

Subcellular location: Endoplasmic reticulum membrane, membrane protein, Golgi apparatus lumen, Secreted, Cell projection, dendrite.

Database links: SwissProt: Q96HE7 Human | Q8R180 Mouse | Q8R4A1 Rat

Recommended Dilutions:

WB	1:1,000
IHC-P	1:1,000

Storage Buffer: PBS (pH7.4), 0.1% BSA, 40% Glycerol. Preservative: 0.05% Sodium Azide.

Storage Instruction: Shipped at 4°C. Store at +4°C short term (1-2 weeks). It is recommended to aliquot into single-use upon delivery. Store at -20°C long term.

Purity: Protein A affinity purified.

Hangzhou Huaan Biotechnology Co., Ltd.

Orders:0086-571-88062880

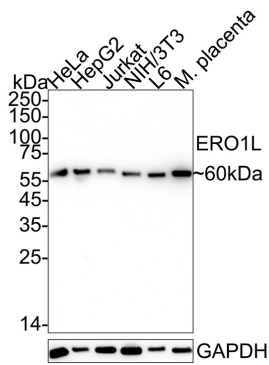
Technical:0086-571-89986345

Service mail:support@huabio.cn

 华安生物
HUABIO
www.huabio.cn

Images

Fig1: Western blot analysis of ERO1L on different lysates with Rabbit anti-ERO1L antibody (HA722818) at 1/1,000 dilution.



Lane 1: HeLa cell lysate (20 µg/Lane)

Lane 2: HepG2 cell lysate (20 µg/Lane)

Lane 3: Jurkat cell lysate (20 µg/Lane)

Lane 4: NIH/3T3 cell lysate (20 µg/Lane)

Lane 5: L6 cell lysate (20 µg/Lane)

Lane 6: Mouse placenta tissue lysate (40 µg/Lane)

Predicted band size: 54 kDa

Observed band size: 60 kDa

Exposure time: 2 minutes; ECL: K1801;

4-20% SDS-PAGE gel.

Proteins were transferred to a PVDF membrane and blocked with 5% NFDM/TBST for 1 hour at room temperature. The primary antibody (HA722818) at 1/1,000 dilution was used in 5% NFDM/TBST at 4°C overnight. Goat Anti-Rabbit IgG - HRP Secondary Antibody (HA1001) at 1/50,000 dilution was used for 1 hour at room temperature.

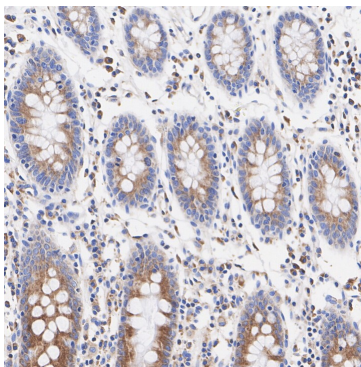


Fig2: Immunohistochemical analysis of paraffin-embedded human colon tissue with Rabbit anti-ERO1L antibody (HA722818) at 1/1,000 dilution.

The section was pre-treated using heat mediated antigen retrieval with Tris-EDTA buffer (pH 9.0) for 20 minutes. The tissues were blocked in 1% BSA for 20 minutes at room temperature, washed with ddH₂O and PBS, and then probed with the primary antibody (HA722818) at 1/1,000 dilution for 1 hour at room temperature. The detection was performed using an HRP conjugated compact polymer system. DAB was used as the chromogen. Tissues were counterstained with hematoxylin and mounted with DPX.

Hangzhou Huaan Biotechnology Co., Ltd.

Orders:0086-571-88062880

Technical:0086-571-89986345

Service mail:support@huabio.cn

华安生物
HUABIO
www.huabio.cn

Note: All products are "FOR RESEARCH USE ONLY AND ARE NOT INTENDED FOR DIAGNOSTIC OR THERAPEUTIC USE".

Background References

1. Liu L et al. ERO1L Is a Novel and Potential Biomarker in Lung Adenocarcinoma and Shapes the Immune-Suppressive Tumor Microenvironment. *Front Immunol.* 2021 Jul
2. Xie J et al. ERO1L promotes the proliferation and metastasis of lung adenocarcinoma via the Wnt2/beta-catenin signaling pathway. *Mol Carcinog.* 2022 Oct

Hangzhou Huaan Biotechnology Co., Ltd.

Orders:0086-571-88062880

Technical:0086-571-89986345

Service mail:support@huabio.cn

 华安生物
HUAABIO
www.huabio.cn