

# Anti-Phospho-Cofilin (S3) Antibody [PSH07-18]

## HA722806



<b>Product Type:</b>	Recombinant Rabbit monoclonal IgG, primary antibodies
<b>Species reactivity:</b>	Human, Rat, Monkey
<b>Applications:</b>	WB
<b>Molecular Wt:</b>	Predicted band size: 19 kDa
<b>Clone number:</b>	PSH07-18

**Description:** Cofilin 1 (non-muscle; n-cofilin), also known as CFL1, is a human gene, part of the ADF/cofilin family. Cofilin is a widely distributed intracellular actin-modulating protein that binds and depolymerizes filamentous F-actin and inhibits the polymerization of monomeric G-actin in a pH-dependent manner. It is involved in the translocation of actin-cofilin complex from cytoplasm to nucleus. One group reports that reelin signaling leads to serine3-phosphorylation of cofilin-1, and this interaction may play a role in the reelin-related regulation of neuronal migration.

**Immunogen:** Synthetic phospho-peptide corresponding to residues surrounding Ser3 of human Cofilin aa 1-50.

**Positive control:** COS-1 cell lysate, C6 cell lysate, Jurkat cell lysate, MCF7 cell lysate, A431 cell lysate.

**Subcellular location:** Nucleus matrix, Cytoplasm, cytoskeleton, Cell projection, ruffle membrane, lamellipodium membrane, lamellipodium, growth cone, axon.

**Database links:** SwissProt: P23528 Human | P45592 Rat

**Recommended Dilutions:**  
**WB** 1:2,000

**Storage Buffer:** PBS (pH7.4), 0.1% BSA, 40% Glycerol. Preservative: 0.05% Sodium Azide.

**Storage Instruction:** Shipped at 4°C. Store at +4°C short term (1-2 weeks). It is recommended to aliquot into single-use upon delivery. Store at -20°C long term.

**Purity:** Protein A affinity purified.

Hangzhou Huaan Biotechnology Co., Ltd.

Orders: 0086-571-88062880

Technical: 0086-571-89986345

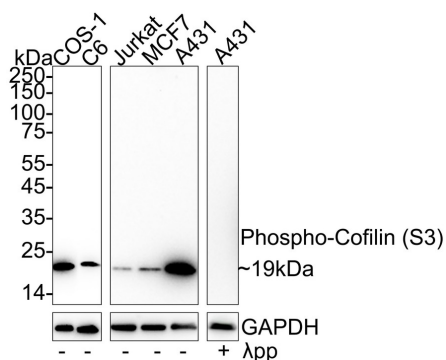
Service mail: support@huabio.cn

 华安生物  
HUABIO  
www.huabio.cn

Applications: WB=Western blot IHC-P=Immunohistochemistry (paraffin) IF-Cell=Immunofluorescence (Cell) IF-Tissue=Immunofluorescence (Tissue) FC=Flow cytometry IP=Immunoprecipitation

## Images

**Fig1:** Western blot analysis of Phospho-Cofilin (S3) on different lysates with Rabbit anti-Phospho-Cofilin (S3) antibody (HA722806) at 1/2,000 dilution.



Lane 1: COS-1 cell lysate

Lane 2: C6 cell lysate

Lane 3: Jurkat cell lysate

Lane 4: MCF7 cell lysate

Lane 5: A431 cell lysate

Lane 6: A431 cell lysate, the membrane treated with  $\lambda$ pp for 1 hour

Lysates/proteins at 20  $\mu$ g/Lane.

Predicted band size: 19 kDa

Observed band size: 19 kDa

Exposure time: 59 seconds; ECL: K1801;

4-20% SDS-PAGE gel.

Proteins were transferred to a PVDF membrane and blocked with 5% NFDM/TBST for 1 hour at room temperature. The primary antibody (HA722806) at 1/2,000 dilution was used in 5% NFDM/TBST at 4°C overnight. Goat Anti-Rabbit IgG - HRP Secondary Antibody (HA1001) at 1/50,000 dilution was used for 1 hour at room temperature.

**Note:** All products are "FOR RESEARCH USE ONLY AND ARE NOT INTENDED FOR DIAGNOSTIC OR THERAPEUTIC USE".

### Background References

1. Hoffmann L et al. Cofilin1 oxidation links oxidative distress to mitochondrial demise and neuronal cell death. Cell Death Dis. 2021 Oct
2. Salz A et al. Cofilin1-driven actin dynamics controls migration of thymocytes and is essential for positive selection in the thymus. J Cell Sci. 2020 Mar

Hangzhou Huaan Biotechnology Co., Ltd.

Orders:0086-571-88062880

Technical:0086-571-89986345

Service mail:support@huabio.cn

华安生物  
HUABIO  
www.huabio.cn

Applications:WB=Western blot IHC-P=Immunohistochemistry (paraffin) IF-Cell=Immunofluorescence (Cell) IF-Tissue=Immunofluorescence (Tissue) FC=Flow cytometry IP=Immunoprecipitation