

# Anti-Phospho-Met (Y1234/Y1235) Antibody [PSH06-90] HA722765



<b>Product Type:</b>	Recombinant Rabbit monoclonal IgG, primary antibodies
<b>Species reactivity:</b>	Human
<b>Applications:</b>	WB
<b>Molecular Wt:</b>	Predicted band size: 156 kDa
<b>Clone number:</b>	PSH06-90

**Description:** Hepatocyte growth factor receptor (HGF receptor) is a protein that in humans is encoded by the MET gene. The protein possesses tyrosine kinase activity. The primary single chain precursor protein is post-translationally cleaved to produce the alpha and beta subunits, which are disulfide linked to form the mature receptor. HGF receptor is a single pass tyrosine kinase receptor essential for embryonic development, organogenesis and wound healing. Hepatocyte growth factor/Scatter Factor (HGF/SF) and its splicing isoform (NK1, NK2) are the only known ligands of the HGF receptor. MET is normally expressed by cells of epithelial origin, while expression of HGF/SF is restricted to cells of mesenchymal origin. When HGF/SF binds its cognate receptor MET it induces its dimerization through a not yet completely understood mechanism leading to its activation.

**Immunogen:** Synthetic phospho-peptide corresponding to residues surrounding Tyr1234/Tyr1235 of human Met aa 1,201-1,250.

**Positive control:** HeLa cell lysate, HeLa starved for 16 hours then treated with 20ng/mL HGF for 10 minutes cell lysate.

**Subcellular location:** Membrane; Secreted.

**Database links:** SwissProt: P08581 Human

**Recommended Dilutions:**  
**WB** 1:1,000

**Storage Buffer:** PBS (pH7.4), 0.1% BSA, 40% Glycerol. Preservative: 0.05% Sodium Azide.

**Storage Instruction:** Store at +4°C after thawing. Aliquot store at -20°C. Avoid repeated freeze / thaw cycles.

**Purity:** Protein A affinity purified.

Hangzhou Huaan Biotechnology Co., Ltd.

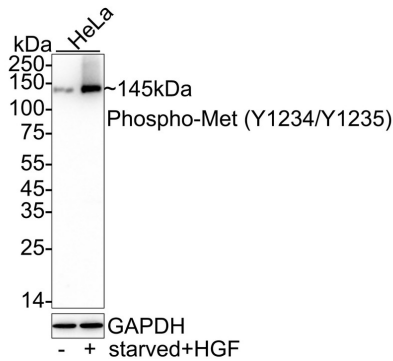
Orders:0086-571-88062880

Technical:0086-571-89986345

Service mail:support@huabio.cn

 华安生物  
HUABIO  
www.huabio.cn

## Images



**Fig1:** Western blot analysis of Phospho-Met (Y1234/Y1235) on different lysates with Rabbit anti-Phospho-Met (Y1234/Y1235) antibody (HA722765) at 1/1,000 dilution.

Lane 1: HeLa cell lysate

Lane 2: HeLa starved for 16 hours then treated with 20ng/mL HGF for 10 minutes cell lysate

Lysates/proteins at 20 µg/Lane.

Predicted band size: 156 kDa

Observed band size: 145 kDa

Exposure time: 59 seconds; ECL: K1801;

4-20% SDS-PAGE gel.

Proteins were transferred to a PVDF membrane and blocked with 5% NFDM/TBST for 1 hour at room temperature. The primary antibody (HA722765) at 1/1,000 dilution was used in 5% NFDM/TBST at 4°C overnight. Goat Anti-Rabbit IgG - HRP Secondary Antibody (HA1001) at 1/50,000 dilution was used for 1 hour at room temperature.

**Note:** All products are "FOR RESEARCH USE ONLY AND ARE NOT INTENDED FOR DIAGNOSTIC OR THERAPEUTIC USE".

## Background References

1. Remon J et al. MET alterations in NSCLC-Current Perspectives and Future Challenges. J Thorac Oncol. 2023 Apr
2. Sakamoto M et al. MET alterations in advanced non-small cell lung cancer. Lung Cancer. 2023 Apr

Hangzhou Huaan Biotechnology Co., Ltd.

Orders:0086-571-88062880

Technical:0086-571-89986345

Service mail:support@huabio.cn

华安生物  
HUABIO  
www.huabio.cn