

Anti-Slow Skeletal Myosin Heavy chain Antibody [PSH07-54] HA722735



Product Type:	Recombinant Rabbit monoclonal IgG, primary antibodies
Species reactivity:	Human, Mouse, Rat
Applications:	WB, IHC-P, IF-Tissue, IHC-Fr, mlHC
Molecular Wt:	Predicted band size: 223 kDa
Clone number:	PSH07-54

Description: MYH7 is a gene encoding a myosin heavy chain beta (MHC- β) isoform (slow twitch) expressed primarily in the heart, but also in skeletal muscles (type I fibers). This isoform is distinct from the fast isoform of cardiac myosin heavy chain, MYH6, referred to as MHC- α . MHC- β is the major protein comprising the thick filament that forms the sarcomeres in cardiac muscle and plays a major role in cardiac muscle contraction.

Immunogen: Synthetic peptide within human MYH7 aa 1,250-1,300.

Positive control: Rat skeletal muscle tissue lysate, human heart tissue, mouse skeletal muscle tissue, rat skeletal muscle tissue, mouse heart tissue, rat heart tissue.

Subcellular location: Cytoplasm, myofibril, sarcomere.

Database links: SwissProt: P12883 Human | Q91Z83 Mouse | P02564 Rat

Recommended Dilutions:

WB	1:1,000
IHC-P	1:2,000
IF-Tissue	1:500
IHC-Fr	1:500
mlHC	1:15,000

Storage Buffer: PBS (pH7.4), 0.1% BSA, 40% Glycerol. Preservative: 0.05% Sodium Azide.

Storage Instruction: Shipped at 4°C. Store at +4°C short term (1-2 weeks). It is recommended to aliquot into single-use upon delivery. Store at -20°C long term.

Purity: Protein A affinity purified.

Hangzhou Huaan Biotechnology Co., Ltd.

Orders:0086-571-88062880

Technical:0086-571-89986345

Service mail:support@huabio.cn


HUABIO
www.huabio.cn

Images

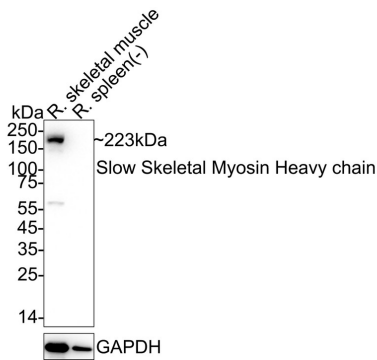


Fig1: Western blot analysis of Slow Skeletal Myosin Heavy chain on different lysates with Rabbit anti-Slow Skeletal Myosin Heavy chain antibody (HA722735) at 1/1,000 dilution.

Lane 1: Rat skeletal muscle tissue lysate

Lane 2: Rat spleen tissue lysate (negative)

Lysates/proteins at 20 µg/Lane.

Predicted band size: 223 kDa

Observed band size: 223 kDa

Exposure time: 10 seconds; ECL: K1802;

4-20% SDS-PAGE gel.

Proteins were transferred to a PVDF membrane and blocked with 5% NFDm/TBST for 1 hour at room temperature. The primary antibody (HA722735) at 1/1,000 dilution was used in 5% NFDm/TBST at 4°C overnight. Goat Anti-Rabbit IgG - HRP Secondary Antibody (HA1001) at 1/50,000 dilution was used for 1 hour at room temperature.

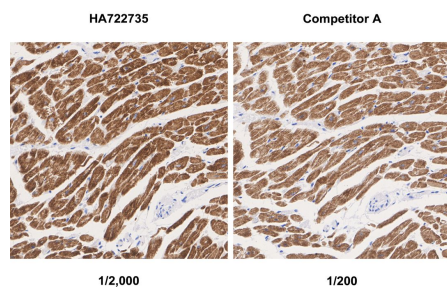


Fig2: Immunohistochemical analysis of paraffin-embedded human heart tissue with Rabbit anti-Slow Skeletal Myosin Heavy chain antibody (HA722735) at 1/2,000 dilution and competitor's antibody at 1/200 dilution.

The section was pre-treated using heat mediated antigen retrieval with Tris-EDTA buffer (pH 9.0) for 20 minutes. The tissues were blocked in 1% BSA for 20 minutes at room temperature, washed with ddH₂O and PBS, and then probed with the primary antibody (HA722735) at 1/2,000 dilution and competitor's antibody at 1/200 dilution for 1 hour at room temperature. The detection was performed using an HRP conjugated compact polymer system. DAB was used as the chromogen. Tissues were counterstained with hematoxylin and mounted with DPX.

Hangzhou Huaan Biotechnology Co., Ltd.

Orders:0086-571-88062880

Technical:0086-571-89986345

Service mail:support@huabio.cn

华安生物
HUABIO
www.huabio.cn

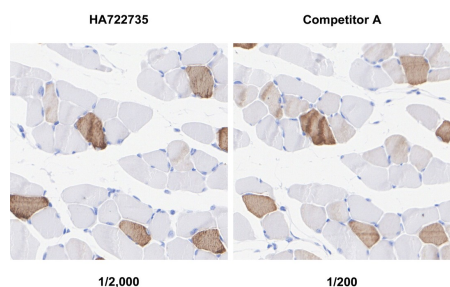


Fig3: Immunohistochemical analysis of paraffin-embedded mouse skeletal muscle tissue with Rabbit anti-Slow Skeletal Myosin Heavy chain antibody (HA722735) at 1/2,000 dilution and competitor's antibody at 1/200 dilution.

The section was pre-treated using heat mediated antigen retrieval with Tris-EDTA buffer (pH 9.0) for 20 minutes. The tissues were blocked in 1% BSA for 20 minutes at room temperature, washed with ddH₂O and PBS, and then probed with the primary antibody (HA722735) at 1/2,000 dilution and competitor's antibody at 1/200 dilution for 1 hour at room temperature. The detection was performed using an HRP conjugated compact polymer system. DAB was used as the chromogen. Tissues were counterstained with hematoxylin and mounted with DPX.

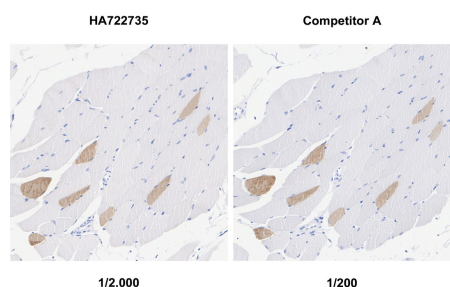


Fig4: Immunohistochemical analysis of paraffin-embedded rat skeletal muscle tissue with Rabbit anti-Slow Skeletal Myosin Heavy chain antibody (HA722735) at 1/2,000 dilution and competitor's antibody at 1/200 dilution.

The section was pre-treated using heat mediated antigen retrieval with Tris-EDTA buffer (pH 9.0) for 20 minutes. The tissues were blocked in 1% BSA for 20 minutes at room temperature, washed with ddH₂O and PBS, and then probed with the primary antibody (HA722735) at 1/2,000 dilution and competitor's antibody at 1/200 dilution for 1 hour at room temperature. The detection was performed using an HRP conjugated compact polymer system. DAB was used as the chromogen. Tissues were counterstained with hematoxylin and mounted with DPX.

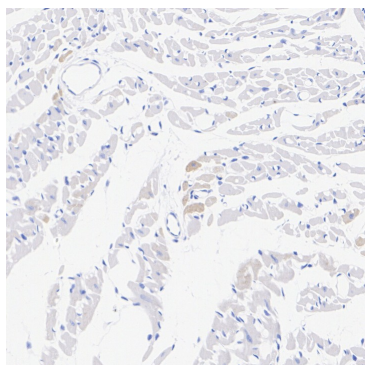


Fig5: Immunohistochemical analysis of paraffin-embedded mouse heart tissue with Rabbit anti-Slow Skeletal Myosin Heavy chain antibody (HA722735) at 1/2,000 dilution.

The section was pre-treated using heat mediated antigen retrieval with Tris-EDTA buffer (pH 9.0) for 20 minutes. The tissues were blocked in 1% BSA for 20 minutes at room temperature, washed with ddH₂O and PBS, and then probed with the primary antibody (HA722735) at 1/2,000 dilution for 1 hour at room temperature. The detection was performed using an HRP conjugated compact polymer system. DAB was used as the chromogen. Tissues were counterstained with hematoxylin and mounted with DPX.

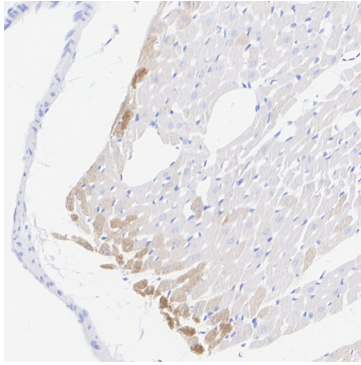


Fig6: Immunohistochemical analysis of paraffin-embedded rat heart tissue with Rabbit anti-Slow Skeletal Myosin Heavy chain antibody (HA722735) at 1/2,000 dilution.

The section was pre-treated using heat mediated antigen retrieval with Tris-EDTA buffer (pH 9.0) for 20 minutes. The tissues were blocked in 1% BSA for 20 minutes at room temperature, washed with ddH₂O and PBS, and then probed with the primary antibody (HA722735) at 1/2,000 dilution for 1 hour at room temperature. The detection was performed using an HRP conjugated compact polymer system. DAB was used as the chromogen. Tissues were counterstained with hematoxylin and mounted with DPX.

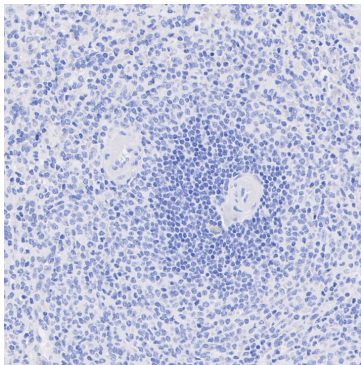


Fig7: Immunohistochemical analysis of paraffin-embedded human spleen tissue (negative) with Rabbit anti-Slow Skeletal Myosin Heavy chain antibody (HA722735) at 1/2,000 dilution.

The section was pre-treated using heat mediated antigen retrieval with Tris-EDTA buffer (pH 9.0) for 20 minutes. The tissues were blocked in 1% BSA for 20 minutes at room temperature, washed with ddH₂O and PBS, and then probed with the primary antibody (HA722735) at 1/2,000 dilution for 1 hour at room temperature. The detection was performed using an HRP conjugated compact polymer system. DAB was used as the chromogen. Tissues were counterstained with hematoxylin and mounted with DPX.

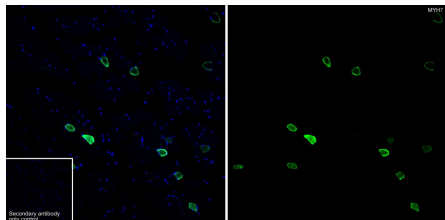


Fig8: Immunofluorescence analysis of paraffin-embedded mouse skeletal muscle tissue labeling Slow Skeletal Myosin Heavy chain with Rabbit anti-Slow Skeletal Myosin Heavy chain antibody (HA722735) at 1/500 dilution.

The section was pre-treated using heat mediated antigen retrieval with Tris-EDTA buffer (pH 9.0) for 20 minutes. The tissues were blocked in 10% negative goat serum for 1 hour at room temperature, washed with PBS, and then probed with the primary antibody (HA722735, green) at 1/500 dilution overnight at 4 °C, washed with PBS. Goat Anti-Rabbit IgG H&L (iFluor™ 488, HA1121) was used as the secondary antibody at 1/1,000 dilution. Nuclei were counterstained with DAPI (blue).

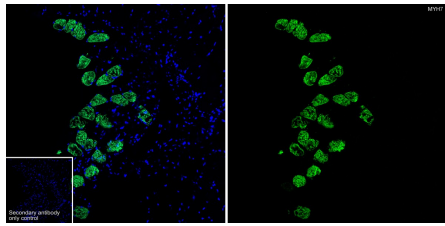


Fig9: Immunofluorescence analysis of frozen mouse skeletal muscle tissue with Rabbit anti-Slow Skeletal Myosin Heavy chain antibody (HA722735) at 1/500 dilution.

The section was pre-treated using heat mediated antigen retrieval with sodium citrate buffer (pH 6.0) for about 2 minutes in microwave oven. The tissues were blocked in 10% negative goat serum for 1 hour at room temperature, washed with PBS, and then probed with the primary antibody (HA722735, green) at 1/500 dilution overnight at 4 °C, washed with PBS. Goat Anti-Rabbit IgG H&L (iFluor™ 488, HA1121) was used as the secondary antibody at 1/1,000 dilution. Nuclei were counterstained with DAPI (blue).

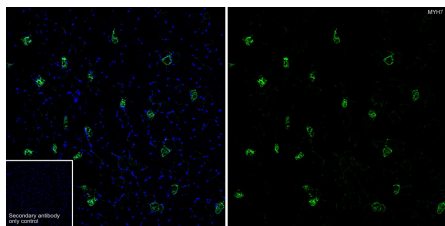


Fig10: Immunofluorescence analysis of frozen rat skeletal muscle tissue with Rabbit anti-Slow Skeletal Myosin Heavy chain antibody (HA722735) at 1/500 dilution.

The section was pre-treated using heat mediated antigen retrieval with sodium citrate buffer (pH 6.0) for about 2 minutes in microwave oven. The tissues were blocked in 10% negative goat serum for 1 hour at room temperature, washed with PBS, and then probed with the primary antibody (HA722735, green) at 1/500 dilution overnight at 4 °C, washed with PBS. Goat Anti-Rabbit IgG H&L (iFluor™ 488, HA1121) was used as the secondary antibody at 1/1,000 dilution. Nuclei were counterstained with DAPI (blue).

Note: All products are “FOR RESEARCH USE ONLY AND ARE NOT INTENDED FOR DIAGNOSTIC OR THERAPEUTIC USE”.

Background References

1. Gao Y et al. MYH7 in cardiomyopathy and skeletal muscle myopathy. *Mol Cell Biochem.* 2024 Feb
2. Park J et al. A genome-first approach to rare variants in hypertrophic cardiomyopathy genes MYBPC3 and MYH7 in a medical biobank. *Hum Mol Genet.* 2022 Mar

Hangzhou Huan Biotechnology Co., Ltd.

Orders:0086-571-88062880

Technical:0086-571-89986345

Service mail:support@huabio.cn

 华安生物
 HUABIO
www.huabio.cn