

# Anti-Slow Skeletal Myosin Heavy chain Antibody [PSH06-58] HA722721



<b>Product Type:</b>	Recombinant Rabbit monoclonal IgG, primary antibodies
<b>Species reactivity:</b>	Human, Mouse, Rat
<b>Applications:</b>	WB, IHC-P
<b>Molecular Wt:</b>	Predicted band size: 223 kDa
<b>Clone number:</b>	PSH06-58

**Description:** MYH7 is a gene encoding a myosin heavy chain beta (MHC- $\beta$ ) isoform (slow twitch) expressed primarily in the heart, but also in skeletal muscles (type I fibers). This isoform is distinct from the fast isoform of cardiac myosin heavy chain, MYH6, referred to as MHC- $\alpha$ . MHC- $\beta$  is the major protein comprising the thick filament that forms the sarcomeres in cardiac muscle and plays a major role in cardiac muscle contraction.

**Immunogen:** Synthetic peptide within human MYH7 aa 1,250-1,300.

**Positive control:** Mouse skeletal muscle tissue lysate, Rat skeletal muscle tissue lysate, human skeletal muscle tissue.

**Subcellular location:** Cytoplasm, myofibril, sarcomere.

**Database links:** SwissProt: P12883 Human | Q91Z83 Mouse | P02564 Rat

**Recommended Dilutions:**

<b>WB</b>	1:1,000
<b>IHC-P</b>	1:2,000

**Storage Buffer:** PBS (pH7.4), 0.1% BSA, 40% Glycerol. Preservative: 0.05% Sodium Azide.

**Storage Instruction:** Shipped at 4°C. Store at +4°C short term (1-2 weeks). It is recommended to aliquot into single-use upon delivery. Store at -20°C long term.

**Purity:** Protein A affinity purified.

Hangzhou Huaan Biotechnology Co., Ltd.

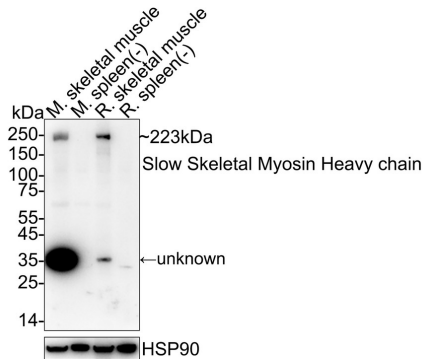
Orders:0086-571-88062880

Technical:0086-571-89986345

Service mail:support@huabio.cn

华安生物  
HUABIO  
www.huabio.cn

## Images



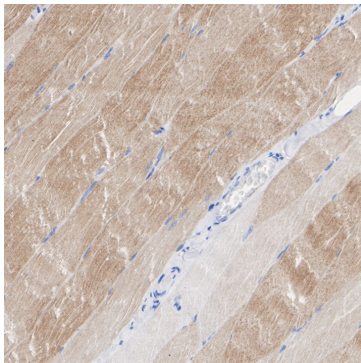
**Fig1:** Western blot analysis of Slow Skeletal Myosin Heavy chain on different lysates with Rabbit anti-Slow Skeletal Myosin Heavy chain antibody (HA722721) at 1/1,000 dilution.

Lane 1: Mouse skeletal muscle tissue lysate (40 µg/Lane)  
 Lane 2: Mouse spleen tissue lysate (negative) (40 µg/Lane)  
 Lane 3: Rat skeletal muscle tissue lysate (40 µg/Lane)  
 Lane 4: Rat spleen tissue lysate (negative) (40 µg/Lane)

Predicted band size: 223 kDa  
 Observed band size: 223 kDa

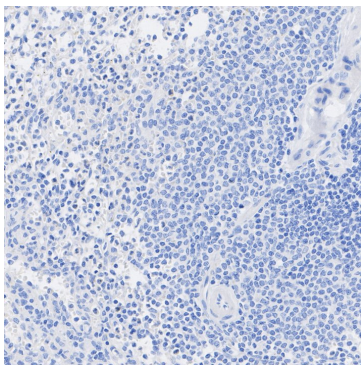
Exposure time: 1 minute; ECL: K1802;  
 4-20% SDS-PAGE gel.

Proteins were transferred to a PVDF membrane and blocked with 5% NFDm/TBST for 1 hour at room temperature. The primary antibody (HA722721) at 1/1,000 dilution was used in 5% NFDm/TBST at 4°C overnight. Goat Anti-Rabbit IgG - HRP Secondary Antibody (HA1001) at 1/50,000 dilution was used for 1 hour at room temperature.



**Fig2:** Immunohistochemical analysis of paraffin-embedded human skeletal muscle tissue with Rabbit anti-Slow Skeletal Myosin Heavy chain antibody (HA722721) at 1/2,000 dilution.

The section was pre-treated using heat mediated antigen retrieval with Tris-EDTA buffer (pH 9.0) for 20 minutes. The tissues were blocked in 1% BSA for 20 minutes at room temperature, washed with ddH<sub>2</sub>O and PBS, and then probed with the primary antibody (HA722721) at 1/2,000 dilution for 1 hour at room temperature. The detection was performed using an HRP conjugated compact polymer system. DAB was used as the chromogen. Tissues were counterstained with hematoxylin and mounted with DPX.



**Fig3:** Immunohistochemical analysis of paraffin-embedded human spleen tissue (negative) with Rabbit anti-Slow Skeletal Myosin Heavy chain antibody (HA722721) at 1/2,000 dilution.

The section was pre-treated using heat mediated antigen retrieval with Tris-EDTA buffer (pH 9.0) for 20 minutes. The tissues were blocked in 1% BSA for 20 minutes at room temperature, washed with ddH<sub>2</sub>O and PBS, and then probed with the primary antibody (HA722721) at 1/2,000 dilution for 1 hour at room temperature. The detection was performed using an HRP conjugated compact polymer system. DAB was used as the chromogen. Tissues were counterstained with hematoxylin and mounted with DPX.

Hangzhou Huaan Biotechnology Co., Ltd.

Orders:0086-571-88062880

Technical:0086-571-89986345

Service mail:support@huabio.cn

华安生物  
HUABIO  
www.huabio.cn

---

**Note:** All products are "FOR RESEARCH USE ONLY AND ARE NOT INTENDED FOR DIAGNOSTIC OR THERAPEUTIC USE".

---

### Background References

1. Gao Y et al. MYH7 in cardiomyopathy and skeletal muscle myopathy. *Mol Cell Biochem.* 2024 Feb
2. Park J et al. A genome-first approach to rare variants in hypertrophic cardiomyopathy genes MYBPC3 and MYH7 in a medical biobank. *Hum Mol Genet.* 2022 Mar

**Hangzhou Huaan Biotechnology Co., Ltd.**

Orders:0086-571-88062880

Technical:0086-571-89986345

Service mail:support@huabio.cn

 华安生物  
HUAABIO  
www.huabio.cn