

Anti-GDF15 Antibody [JE39-90]

HA722551



Product Type:	Recombinant Rabbit monoclonal IgG, primary antibodies
Species reactivity:	Human
Applications:	WB
Molecular Wt:	Predicted band size: 34 kDa
Clone number:	JE39-90

Description: Growth/differentiation factor 15 is a protein that in humans is encoded by the GDF15 gene. GDF15 was first identified as Macrophage inhibitory cytokine-1 or MIC-1. It is a protein belonging to the transforming growth factor beta superfamily. Under normal conditions, GDF15 is expressed in low concentrations in most organs and upregulated because of injury of organs such as liver, kidney, heart and lung. The function of GDF15 is not fully clear but it seems to have a role in regulating inflammatory pathways and to be involved in regulating apoptosis, angiogenesis, cell repair and cell growth, which are biological processes observed in cardiovascular and neoplastic disorders.

Immunogen: Synthetic peptide within human GDF15 aa 241-290 / 308.

Positive control: HepG2 cell lysate, SK-MEL-28 cell lysate, LNCaP cell lysate.

Subcellular location: Secreted.

Database links: SwissProt: Q99988 Human

Recommended Dilutions:

WB 1:2,000

Storage Buffer: 1*TBS (pH7.4), 0.05% BSA, 40% Glycerol. Preservative: 0.05% Sodium Azide.

Storage Instruction: Shipped at 4°C. Store at +4°C short term (1-2 weeks). It is recommended to aliquot into single-use upon delivery. Store at -20°C long term.

Purity: Protein A affinity purified.

Hangzhou Huaan Biotechnology Co., Ltd.

Orders:0086-571-88062880

Technical:0086-571-89986345

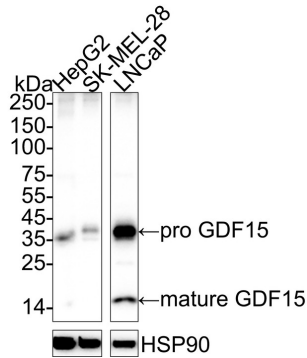
Service mail:support@huabio.cn

 华安生物
HUABIO
www.huabio.cn

Images

Fig1: Western blot analysis of GDF15 on different lysates with Rabbit anti-GDF15 antibody (HA722551) at 1/1,000 dilution.

Lane 1: HepG2 cell lysate
Lane 2: SK-MEL-28 cell lysate
Lane 3: LNCaP cell lysate



Lysates/proteins at 20 µg/Lane.

Predicted band size: 34 kDa
Observed band size: 34/12.5 kDa

Exposure time: 25 seconds; ECL: K1802;

4-20% SDS-PAGE gel.

Proteins were transferred to a PVDF membrane and blocked with 5% NFDM/TBST for 1 hour at room temperature. The primary antibody (HA722551) at 1/1,000 dilution was used in 5% NFDM/TBST at 4°C overnight. Goat Anti-Rabbit IgG - HRP Secondary Antibody (HA1001) at 1/50,000 dilution was used for 1 hour at room temperature.

Note: All products are "FOR RESEARCH USE ONLY AND ARE NOT INTENDED FOR DIAGNOSTIC OR THERAPEUTIC USE".

Background References

1. Wang D et al. GDF15: emerging biology and therapeutic applications for obesity and cardiometabolic disease. Nat Rev Endocrinol. 2021 Oct
2. Johann K et al. The Role of GDF15 as a Myomitokine. Cells. 2021 Nov

Hangzhou Huaan Biotechnology Co., Ltd.

Orders:0086-571-88062880

Technical:0086-571-89986345

Service mail:support@huabio.cn

华安生物
HUABIO
www.huabio.cn