

Anti-Phospho-Paxillin (Y118) Antibody [JE09-10]

HA722526



Product Type:	Recombinant Rabbit monoclonal IgG, primary antibodies
Species reactivity:	Human
Applications:	WB
Molecular Wt:	Predicted band size: 65 kDa
Clone number:	JE09-10

Description: Paxillin is a protein that in humans is encoded by the PXN gene. Paxillin is expressed at focal adhesions of non-striated cells and at costameres of striated muscle cells, and it functions to adhere cells to the extracellular matrix. Mutations in PXN as well as abnormal expression of paxillin protein has been implicated in the progression of various cancers.

Immunogen: Synthetic phosphopeptide corresponding to residues surrounding Tyr118 of human Paxillin.

Positive control: A431 cell lysate, PANC-1 cell lysate.

Subcellular location: Cytoplasm, cytoskeleton, Cell junction, focal adhesion, Cytoplasm, cell cortex.

Database links: SwissProt: P49023 Human

Recommended Dilutions:

WB 1:1,000

Storage Buffer: 1*TBS (pH7.4), 0.05% BSA, 40% Glycerol. Preservative: 0.05% Sodium Azide.

Storage Instruction: Shipped at 4℃. Store at +4℃ short term (1-2 weeks). It is recommended to aliquot into single-use upon delivery. Store at -20℃ long term.

Purity: Protein A affinity purified.

Hangzhou Huaan Biotechnology Co., Ltd.

Orders:0086-571-88062880

Technical:0086-571-89986345

Service mail:support@huabio.cn

华安生物
HUABIO
www.huabio.cn

Applications:WB=Western blot IHC-P=Immunohistochemistry (paraffin) IF-Cell=Immunofluorescence (Cell) IF-Tissue=Immunofluorescence (Tissue) FC=Flow cytometry IP=Immunoprecipitation

Images

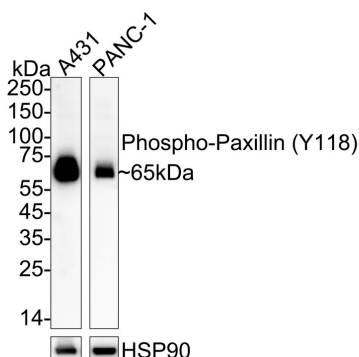


Fig1: Western blot analysis of Phospho-Paxillin (Y118) on different lysates with Rabbit anti-Phospho-Paxillin (Y118) antibody (HA722526) at 1/1,000 dilution.

Lane 1: A431 cell lysate

Lane 2: PANC-1 cell lysate

Lysates/proteins at 20 µg/Lane.

Predicted band size: 65 kDa

Observed band size: 65 kDa

Exposure time: 1 minute; ECL: K1802;

4-20% SDS-PAGE gel.

Proteins were transferred to a PVDF membrane and blocked with 5% NFDM/TBST for 1 hour at room temperature. The primary antibody (HA722526) at 1/1,000 dilution was used in 5% NFDM/TBST at 4°C overnight. Goat Anti-Rabbit IgG - HRP Secondary Antibody (HA1001) at 1/50,000 dilution was used for 1 hour at room temperature.

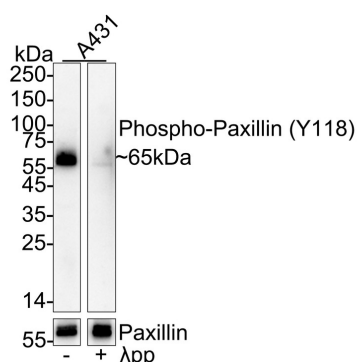


Fig2: Western blot analysis of Phospho-Paxillin (Y118) on different lysates with Rabbit anti-Phospho-Paxillin (Y118) antibody (HA722526) at 1/1,000 dilution and pan Paxillin antibody (ET1607-22) at 1/1,000 dilution.

Lane 1: A431 cell lysate

Lane 2: A431 cell lysate, the membrane treated with λpp for 1 hour

Lysates/proteins at 10 µg/Lane.

Predicted band size: 65 kDa

Observed band size: 65 kDa

Exposure time: 59 seconds; ECL: K1802;

4-20% SDS-PAGE gel.

Proteins were transferred to a PVDF membrane and blocked with 5% NFDM/TBST for 1 hour at room temperature. The primary antibody (HA722526) at 1/1,000 dilution and pan Paxillin antibody (ET1607-22) at 1/1,000 dilution were used in 5% NFDM/TBST at 4°C overnight. Goat Anti-Rabbit IgG - HRP Secondary Antibody (HA1001) at 1/50,000 dilution was used for 1 hour at room temperature.

Hangzhou Huaan Biotechnology Co., Ltd.

Orders:0086-571-88062880

Technical:0086-571-89986345

Service mail:support@huabio.cn

华安生物
HUABIO
www.huabio.cn

Note: All products are "FOR RESEARCH USE ONLY AND ARE NOT INTENDED FOR DIAGNOSTIC OR THERAPEUTIC USE".

Background References

1. Ripamonti M et al. Paxillin: A Hub for Mechano-Transduction from the beta3 Integrin-Talin-Kindlin Axis. Front Cell Dev Biol. 2022 Apr
2. Zhang Y et al. Direct active Fyn-paxillin interaction regulates vascular smooth muscle cell migration. J Smooth Muscle Res. 2023

Hangzhou Huaan Biotechnology Co., Ltd.

Orders:0086-571-88062880

Technical:0086-571-89986345

Service mail:support@huabio.cn

 华安生物
HUAABIO
www.huabio.cn

Applications:WB=Western blot IHC-P=Immunohistochemistry (paraffin) IF-Cell=Immunofluorescence (Cell) IF-Tissue=Immunofluorescence (Tissue) FC=Flow cytometry IP=Immunoprecipitation